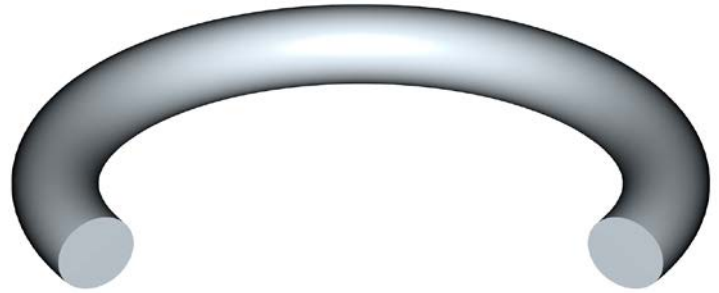




O-Rings





O-Rings Standard Size



O-Rings first became popular during World War II. One of the early standards, AN6227, contained only 88 sizes. As the usefulness and flexibility of the O-Ring became apparent, additional standards were developed to expand the sizes available to the engineers of the day. Today, AS-568, containing 379 sizes, is considered to be the O-Ring industry's standard.

The following 11 pages list the O-Rings that *Precision Associates* considers to be standard sizes. This list contains not only the AS-568 O-Rings, but our unique extended sizes. PAI has added these O-Rings to the beginning and/or end of each Cross Section series. You will find 26 sizes added to the 400 series alone.

Our O-Rings are available in more than 1,000 compounds developed by PAI chemists to meet the challenging requirements of today's applications. Refer to our Compound Selection guide, or call us for help determining the material best suited for your application.

The dimensions and tolerances listed are per AS-568 and apply to our standard 70 Durometer Buna N. Due to the variations in shrink characteristics of rubber materials, design engineers should not assume that the dimensions and tolerances will apply to all materials. General shrink characteristics are available in PAI Technical Bulletin 111. When necessary, you may contact Precision Associates' Customer Service department to obtain the expected dimensions and tolerances for our other compounds.

If our Standard Size O-Rings will not meet your needs, be sure to check out our very large selection of Special Sizes starting on page 15 of this document.

| Mold IDen | Nominal Dimensions | | | Actual Dimensions | | |
|--------------|--------------------|-------|------|-------------------|-------------|----------|
| | ID | OD | C/S | ID | C/S | OD (Ref) |
| 1-001 | 1/32 | 3/32 | 1/32 | .029 ± .004 | .040 ± .003 | .109 |
| 40-70 | 5/64 | 9/64 | 1/32 | .070 ± .005 | .040 | .150 |
| 1-002 | 3/64 | 9/64 | 3/64 | .042 ± .004 | .050 | .142 |
| 1-003 | 1/16 | 11/64 | 1/16 | .056 | .060 | .176 |
| 1-004 | 5/64 | 13/64 | 1/16 | .070 ± .005 | .070 | .210 |
| 1-005 | 7/64 | 15/64 | 1/16 | .101 | .070 | .241 |
| 1-006 | 1/8 | 1/4 | 1/16 | .114 | .070 | .254 |
| 1-007 | 5/32 | 9/32 | 1/16 | .145 | .070 | .285 |
| 1-008 | 3/16 | 5/16 | 1/16 | .176 | .070 | .316 |
| 1-009 | 7/32 | 11/32 | 1/16 | .208 | .070 | .348 |
| 1-010 | 1/4 | 3/8 | 1/16 | .239 | .070 | .379 |
| 1-011 | 5/16 | 7/16 | 1/16 | .301 | .070 | .441 |
| 1-012 | 3/8 | 1/2 | 1/16 | .364 | .070 | .504 |
| 1-013 | 7/16 | 9/16 | 1/16 | .426 | .070 | .566 |
| 1-014 | 1/2 | 5/8 | 1/16 | .489 | .070 | .629 |
| 1-015 | 9/16 | 11/16 | 1/16 | .551 ± .007 | .070 | .691 |
| 1-016 | 5/8 | 3/4 | 1/16 | .614 ± .009 | .070 | .754 |
| 1-017 | 11/16 | 13/16 | 1/16 | .676 | .070 | .816 |
| 1-018 | 3/4 | 7/8 | 1/16 | .739 | .070 | .879 |
| 1-019 | 13/16 | 15/16 | 1/16 | .801 | .070 | .941 |



O-Rings

Standard Size



| Mold IDen | Nominal Dimensions | | | Actual Dimensions | | |
|-----------|--------------------|--------|------|-------------------|-------------|----------|
| | ID | OD | C/S | ID | C/S | OD (Ref) |
| 1-019 | 13/16 | 15/16 | 1/16 | .801 ± .009 | .070 ± .003 | .941 |
| 1-020 | 7/8 | 1 | 1/16 | .864 | .070 | 1.004 |
| 1-021 | 15/16 | 1 1/16 | 1/16 | .926 | .070 | 1.066 |
| 1-022 | 1 | 1 1/8 | 1/16 | .989 ± .010 | .070 | 1.129 |
| 1-023 | 1 1/16 | 1 3/16 | 1/16 | 1.051 | .070 | 1.191 |
| 1-024 | 1 1/8 | 1 1/4 | 1/16 | 1.114 | .070 | 1.254 |
| 1-025 | 1 3/16 | 1 5/16 | 1/16 | 1.176 ± .011 | .070 | 1.316 |
| 1-026 | 1 1/4 | 1 3/8 | 1/16 | 1.239 | .070 | 1.379 |
| 1-027 | 1 5/16 | 1 7/16 | 1/16 | 1.301 | .070 | 1.441 |
| 1-028 | 1 3/8 | 1 1/2 | 1/16 | 1.364 ± .013 | .070 | 1.504 |
| 1-029 | 1 1/2 | 1 5/8 | 1/16 | 1.489 | .070 | 1.629 |
| 1-030 | 1 5/8 | 1 3/4 | 1/16 | 1.614 | .070 | 1.754 |
| 1-031 | 1 3/4 | 1 7/8 | 1/16 | 1.739 ± .015 | .070 | 1.879 |
| 1-032 | 1 7/8 | 2 | 1/16 | 1.864 | .070 | 2.004 |
| 1-033 | 2 | 2 1/8 | 1/16 | 1.989 ± .018 | .070 | 2.129 |
| 1-034 | 2 1/8 | 2 1/4 | 1/16 | 2.114 | .070 | 2.254 |
| 1-035 | 2 1/4 | 2 3/8 | 1/16 | 2.239 | .070 | 2.379 |
| 1-036 | 2 3/8 | 2 1/2 | 1/16 | 2.364 | .070 | 2.504 |
| 1-037 | 2 1/2 | 2 5/8 | 1/16 | 2.489 | .070 | 2.629 |
| 1-038 | 2 5/8 | 2 3/4 | 1/16 | 2.614 ± .020 | .070 | 2.754 |
| 1-039 | 2 3/4 | 2 7/8 | 1/16 | 2.739 | .070 | 2.879 |
| 1-040 | 2 7/8 | 3 | 1/16 | 2.864 | .070 | 3.004 |
| 1-041 | 3 | 3 1/8 | 1/16 | 2.989 ± .024 | .070 | 3.129 |
| 1-042 | 3 1/4 | 3 3/8 | 1/16 | 3.239 | .070 | 3.379 |
| 1-043 | 3 1/2 | 3 5/8 | 1/16 | 3.489 | .070 | 3.629 |
| 1-044 | 3 3/4 | 3 7/8 | 1/16 | 3.739 ± .027 | .070 | 3.879 |
| 1-045 | 4 | 4 1/8 | 1/16 | 3.989 | .070 | 4.129 |
| 1-046 | 4 1/4 | 4 3/8 | 1/16 | 4.239 ± .030 | .070 | 4.379 |
| 1-047 | 4 1/2 | 4 5/8 | 1/16 | 4.489 | .070 | 4.629 |
| 1-048 | 4 3/4 | 4 7/8 | 1/16 | 4.739 | .070 | 4.879 |
| 1-049 | 5 | 5 1/8 | 1/16 | 4.989 ± .037 | .070 | 5.129 |
| 1-050 | 5 1/4 | 5 3/8 | 1/16 | 5.239 | .070 | 5.379 |
| 1-051 | 5 1/2 | 5 5/8 | 1/16 | 5.489 | .070 | 5.629 |
| 1-052 | 5 3/4 | 5 7/8 | 1/16 | 5.739 | .070 | 5.879 |
| 1-053 | 6 | 6 1/8 | 1/16 | 5.989 | .070 | 6.129 |
| 1-054 | 6 1/4 | 6 3/8 | 1/16 | 6.239 ± .040 | .070 | 6.379 |
| 1-055 | 6 1/2 | 6 5/8 | 1/16 | 6.489 | .070 | 6.629 |
| 1-056 | 6 3/4 | 6 7/8 | 1/16 | 6.739 | .070 | 6.879 |
| 1-057 | 7 | 7 1/8 | 1/16 | 6.989 | .070 | 7.129 |
| 1-058 | 7 1/4 | 7 3/8 | 1/16 | 7.239 ± .045 | .070 | 7.379 |
| 1-059 | 7 1/2 | 7 5/8 | 1/16 | 7.489 | .070 | 7.629 |
| 1-060 | 7 3/4 | 7 7/8 | 1/16 | 7.739 | .070 | 7.879 |
| 1-061 | 8 | 8 1/8 | 1/16 | 7.989 | .070 | 8.129 |



O-Rings

Standard Size



| Mold IDen | Nominal Dimensions | | | Actual Dimensions | | |
|-----------|--------------------|---------|------|-------------------|-------------|----------|
| | ID | OD | C/S | ID | C/S | OD (Ref) |
| 1-102 | 1/16 | 1/4 | 3/32 | .049 ± .005 | .103 ± .003 | 0.256 |
| 1-103 | 3/32 | 9/32 | 3/32 | .081 | .103 | 0.287 |
| 1-104 | 1/8 | 5/16 | 3/32 | .112 | .103 | 0.318 |
| 1-105 | 5/32 | 11/32 | 3/32 | .143 | .103 | 0.349 |
| 1-106 | 3/16 | 3/8 | 3/32 | .175 | .103 | 0.381 |
| 1-107 | 7/32 | 13/32 | 3/32 | .206 | .103 | 0.412 |
| 1-108 | 1/4 | 7/16 | 3/32 | .237 | .103 | 0.443 |
| 1-109 | 5/16 | 1/2 | 3/32 | .299 | .103 | 0.505 |
| 1-110 | 3/8 | 9/16 | 3/32 | .362 | .103 | 0.568 |
| 1-111 | 7/16 | 5/8 | 3/32 | .424 | .103 | 0.630 |
| 1-112 | 1/2 | 11/16 | 3/32 | .487 | .103 | 0.693 |
| 1-113 | 9/16 | 3/4 | 3/32 | .549 ± .007 | .103 | 0.755 |
| 1-114 | 5/8 | 13/16 | 3/32 | .612 ± .009 | .103 | 0.818 |
| 1-115 | 11/16 | 7/8 | 3/32 | .674 | .103 | 0.880 |
| 1-116 | 3/4 | 15/16 | 3/32 | .737 | .103 | 0.943 |
| 1-117 | 13/16 | 1 | 3/32 | .799 ± .010 | .103 | 1.005 |
| 1-118 | 7/8 | 1 1/16 | 3/32 | .862 | .103 | 1.068 |
| 1-119 | 15/16 | 1 1/8 | 3/32 | .924 | .103 | 1.130 |
| 1-120 | 1 | 1 3/16 | 3/32 | .987 | .103 | 1.193 |
| 1-121 | 1 1/16 | 1 1/4 | 3/32 | 1.049 | .103 | 1.255 |
| 1-122 | 1 1/8 | 1 5/16 | 3/32 | 1.112 | .103 | 1.318 |
| 1-123 | 1 3/16 | 1 3/8 | 3/32 | 1.174 ± .012 | .103 | 1.380 |
| 1-124 | 1 1/4 | 1 7/16 | 3/32 | 1.237 | .103 | 1.443 |
| 1-125 | 1 5/16 | 1 1/2 | 3/32 | 1.299 | .103 | 1.505 |
| 1-126 | 1 3/8 | 1 9/16 | 3/32 | 1.362 | .103 | 1.568 |
| 1-127 | 1 7/16 | 1 5/8 | 3/32 | 1.424 | .103 | 1.630 |
| 1-128 | 1 1/2 | 1 11/16 | 3/32 | 1.487 | .103 | 1.693 |
| 1-129 | 1 9/16 | 1 3/4 | 3/32 | 1.549 ± .015 | .103 | 1.755 |
| 1-130 | 1 5/8 | 1 13/16 | 3/32 | 1.612 | .103 | 1.818 |
| 1-131 | 1 11/16 | 1 7/8 | 3/32 | 1.674 | .103 | 1.880 |
| 1-132 | 1 3/4 | 1 15/16 | 3/32 | 1.737 | .103 | 1.943 |
| 1-133 | 1 13/16 | 2 | 3/32 | 1.799 | .103 | 2.005 |
| 1-134 | 1 7/8 | 2 1/16 | 3/32 | 1.862 | .103 | 2.068 |
| 1-135 | 1 15/16 | 2 1/8 | 3/32 | 1.925 ± .017 | .103 | 2.131 |
| 1-136 | 2 | 2 3/16 | 3/32 | 1.987 | .103 | 2.193 |
| 1-137 | 2 1/16 | 2 1/4 | 3/32 | 2.050 | .103 | 2.256 |
| 1-138 | 2 1/8 | 2 5/16 | 3/32 | 2.112 | .103 | 2.318 |
| 1-139 | 2 3/16 | 2 3/8 | 3/32 | 2.175 | .103 | 2.381 |
| 1-140 | 2 1/4 | 2 7/16 | 3/32 | 2.237 | .103 | 2.443 |
| 1-141 | 2 5/16 | 2 1/2 | 3/32 | 2.300 ± .020 | .103 | 2.506 |
| 1-142 | 2 3/8 | 2 9/16 | 3/32 | 2.362 | .103 | 2.568 |
| 1-143 | 2 7/16 | 2 5/8 | 3/32 | 2.425 | .103 | 2.631 |
| 1-144 | 2 1/2 | 2 11/16 | 3/32 | 2.487 | .103 | 2.693 |



O-Rings

Standard Size



| Mold IDen | Nominal Dimensions | | | Actual Dimensions | | |
|-----------|--------------------|---------|------|-------------------|-------------|----------|
| | ID | OD | C/S | ID | C/S | OD (Ref) |
| 1-145 | 2 9/16 | 2 3/4 | 3/32 | 2.550 ± .020 | .103 ± .003 | 2.756 |
| 1-146 | 2 5/8 | 2 13/16 | 3/32 | 2.612 ± | .103 | 2.818 |
| 1-147 | 2 11/16 | 2 7/8 | 3/32 | 2.675 ± .022 | .103 | 2.881 |
| 1-148 | 2 3/4 | 2 15/16 | 3/32 | 2.737 ± | .103 | 2.943 |
| 1-149 | 2 13/16 | 3 | 3/32 | 2.800 ± | .103 | 3.006 |
| 1-150 | 2 7/8 | 3 1/16 | 3/32 | 2.862 ± | .103 | 3.068 |
| 1-151 | 3 | 3 3/16 | 3/32 | 2.987 ± .024 | .103 | 3.193 |
| 1-152 | 3 1/4 | 3 7/16 | 3/32 | 3.237 ± | .103 | 3.443 |
| 1-153 | 3 1/2 | 3 11/16 | 3/32 | 3.487 ± | .103 | 3.693 |
| 1-154 | 3 3/4 | 3 15/16 | 3/32 | 3.737 ± .028 | .103 | 3.943 |
| 1-155 | 4 | 4 3/16 | 3/32 | 3.987 ± | .103 | 4.193 |
| 1-156 | 4 1/4 | 4 7/16 | 3/32 | 4.237 ± .030 | .103 | 4.443 |
| 1-157 | 4 1/2 | 4 11/16 | 3/32 | 4.487 ± | .103 | 4.693 |
| 1-158 | 4 3/4 | 4 15/16 | 3/32 | 4.737 ± | .103 | 4.943 |
| 1-159 | 5 | 5 3/16 | 3/32 | 4.987 ± .035 | .103 | 5.193 |
| 1-160 | 5 1/4 | 5 7/16 | 3/32 | 5.237 ± | .103 | 5.443 |
| 1-161 | 5 1/2 | 5 11/16 | 3/32 | 5.487 ± | .103 | 5.693 |
| 1-162 | 5 3/4 | 5 15/16 | 3/32 | 5.737 ± | .103 | 5.943 |
| 1-163 | 6 | 6 3/16 | 3/32 | 5.987 ± | .103 | 6.193 |
| 1-164 | 6 1/4 | 6 7/16 | 3/32 | 6.237 ± .040 | .103 | 6.443 |
| 1-165 | 6 1/2 | 6 11/16 | 3/32 | 6.487 ± | .103 | 6.693 |
| 1-166 | 6 3/4 | 6 15/16 | 3/32 | 6.737 ± | .103 | 6.943 |
| 1-167 | 7 | 7 3/16 | 3/32 | 6.987 ± | .103 | 7.193 |
| 1-168 | 7 1/4 | 7 7/16 | 3/32 | 7.237 ± .045 | .103 | 7.443 |
| 1-169 | 7 1/2 | 7 11/16 | 3/32 | 7.487 ± | .103 | 7.693 |
| 1-170 | 7 3/4 | 7 15/16 | 3/32 | 7.737 ± | .103 | 7.943 |
| 1-171 | 8 | 8 3/16 | 3/32 | 7.987 ± | .103 | 8.193 |
| 1-172 | 8 1/4 | 8 7/16 | 3/32 | 8.237 ± .050 | .103 | 8.443 |
| 1-173 | 8 1/2 | 8 11/16 | 3/32 | 8.487 ± | .103 | 8.693 |
| 1-174 | 8 3/4 | 8 15/16 | 3/32 | 8.737 ± | .103 | 8.943 |
| 1-175 | 9 | 9 3/16 | 3/32 | 8.987 ± | .103 | 9.193 |
| 1-176 | 9 1/4 | 9 7/16 | 3/32 | 9.237 ± .055 | .103 | 9.443 |
| 1-177 | 9 1/2 | 9 11/16 | 3/32 | 9.487 ± | .103 | 9.693 |
| 1-178 | 9 3/4 | 9 15/16 | 3/32 | 9.737 ± | .103 | 9.943 |
| 1-179 | 10 | 10 3/16 | 3/32 | 9.987 ± | .103 | 10.193 |



O-Rings

Standard Size



| Mold IDen | Nominal Dimensions | | | Actual Dimensions | | |
|-----------|--------------------|---------|-----|-------------------|-------------|----------|
| | ID | OD | C/S | ID | C/S | OD (Ref) |
| 1-201 | 3/16 | 7/16 | 1/8 | 0.171 ± .005 | .139 ± .004 | 0.449 |
| 1-202 | 1/4 | 1/2 | 1/8 | 0.234 | .139 | 0.512 |
| 1-203 | 5/16 | 9/16 | 1/8 | 0.301 | .139 | 0.579 |
| 1-204 | 3/8 | 5/8 | 1/8 | 0.359 | .139 | 0.637 |
| 1-205 | 7/16 | 11/16 | 1/8 | 0.421 | .139 | 0.699 |
| 1-206 | 1/2 | 3/4 | 1/8 | 0.484 | .139 | 0.762 |
| 1-207 | 9/16 | 13/16 | 1/8 | 0.549 ± .007 | .139 | 0.827 |
| 1-208 | 5/8 | 7/8 | 1/8 | 0.609 ± .009 | .139 | 0.887 |
| 1-209 | 11/16 | 15/16 | 1/8 | .672 | .139 | 0.950 |
| 1-210 | 3/4 | 1 | 1/8 | .734 ± .010 | .139 | 1.012 |
| 1-211 | 13/16 | 1 1/16 | 1/8 | .796 | .139 | 1.074 |
| 1-212 | 7/8 | 1 1/8 | 1/8 | .859 | .139 | 1.137 |
| 1-213 | 15/16 | 1 3/16 | 1/8 | .921 | .139 | 1.199 |
| 1-214 | 1 | 1 1/4 | 1/8 | .984 | .139 | 1.262 |
| 1-215 | 1 1/16 | 1 5/16 | 1/8 | 1.046 | .139 | 1.324 |
| 1-216 | 1 1/8 | 1 3/8 | 1/8 | 1.109 ± .012 | .139 | 1.387 |
| 1-217 | 1 3/16 | 1 7/16 | 1/8 | 1.171 | .139 | 1.449 |
| 1-218 | 1 1/4 | 1 1/2 | 1/8 | 1.234 | .139 | 1.512 |
| 1-219 | 1 5/16 | 1 9/16 | 1/8 | 1.296 | .139 | 1.574 |
| 1-220 | 1 3/8 | 1 5/8 | 1/8 | 1.359 | .139 | 1.637 |
| 1-221 | 1 7/16 | 1 11/16 | 1/8 | 1.421 | .139 | 1.699 |
| 1-222 | 1 1/2 | 1 3/4 | 1/8 | 1.484 ± .015 | .139 | 1.762 |
| 1-223 | 1 5/8 | 1 7/8 | 1/8 | 1.609 | .139 | 1.887 |
| 1-224 | 1 3/4 | 2 | 1/8 | 1.734 | .139 | 2.012 |
| 1-225 | 1 7/8 | 2 1/8 | 1/8 | 1.859 ± .018 | .139 | 2.137 |
| 1-226 | 2 | 2 1/4 | 1/8 | 1.984 | .139 | 2.262 |
| 1-227 | 2 1/8 | 2 3/8 | 1/8 | 2.109 | .139 | 2.387 |
| 1-228 | 2 1/4 | 2 1/2 | 1/8 | 2.234 ± .020 | .139 | 2.512 |
| 1-229 | 2 3/8 | 2 5/8 | 1/8 | 2.359 | .139 | 2.637 |
| 1-230 | 2 1/2 | 2 3/4 | 1/8 | 2.484 | .139 | 2.762 |
| 1-231 | 2 5/8 | 2 7/8 | 1/8 | 2.609 | .139 | 2.887 |
| 1-232 | 2 3/4 | 3 | 1/8 | 2.734 ± .024 | .139 | 3.012 |
| 1-233 | 2 7/8 | 3 1/8 | 1/8 | 2.859 | .139 | 3.137 |
| 1-234 | 3 | 3 1/4 | 1/8 | 2.984 | .139 | 3.262 |
| 1-235 | 3 1/8 | 3 3/8 | 1/8 | 3.109 | .139 | 3.387 |
| 1-236 | 3 1/4 | 3 1/2 | 1/8 | 3.234 | .139 | 3.512 |
| 1-237 | 3 3/8 | 3 5/8 | 1/8 | 3.359 | .139 | 3.637 |
| 1-238 | 3 1/2 | 3 3/4 | 1/8 | 3.484 | .139 | 3.762 |
| 1-239 | 3 5/8 | 3 7/8 | 1/8 | 3.609 ± .028 | .139 | 3.887 |
| 1-240 | 3 3/4 | 4 | 1/8 | 3.734 | .139 | 4.012 |
| 1-241 | 3 7/8 | 4 1/8 | 1/8 | 3.859 | .139 | 4.137 |
| 1-242 | 4 | 4 1/4 | 1/8 | 3.984 | .139 | 4.262 |
| 1-243 | 4 1/8 | 4 3/8 | 1/8 | 4.109 | .139 | 4.387 |



O-Rings

Standard Size



| Mold IDen | Nominal Dimensions | | | Actual Dimensions | | |
|-----------|--------------------|--------|-----|-------------------|-------------|----------|
| | ID | OD | C/S | ID | C/S | OD (Ref) |
| 1-244 | 4 1/4 | 4 1/2 | 1/8 | 4.234 ± .030 | .139 ± .004 | 4.512 |
| 1-245 | 4 3/8 | 4 5/8 | 1/8 | 4.359 | .139 | 4.637 |
| 1-246 | 4 1/2 | 4 3/4 | 1/8 | 4.484 | .139 | 4.762 |
| 1-247 | 4 5/8 | 4 7/8 | 1/8 | 4.609 | .139 | 4.887 |
| 1-248 | 4 3/4 | 5 | 1/8 | 4.734 | .139 | 5.012 |
| 1-249 | 4 7/8 | 5 1/8 | 1/8 | 4.859 ± .035 | .139 | 5.137 |
| 1-250 | 5 | 5 1/4 | 1/8 | 4.984 | .139 | 5.262 |
| 1-251 | 5 1/8 | 5 3/8 | 1/8 | 5.109 | .139 | 5.387 |
| 1-252 | 5 1/4 | 5 1/2 | 1/8 | 5.234 | .139 | 5.512 |
| 1-253 | 5 3/8 | 5 5/8 | 1/8 | 5.359 | .139 | 5.637 |
| 1-254 | 5 1/2 | 5 3/4 | 1/8 | 5.484 | .139 | 5.762 |
| 1-255 | 5 5/8 | 5 7/8 | 1/8 | 5.609 | .139 | 5.887 |
| 1-256 | 5 3/4 | 6 | 1/8 | 5.734 | .139 | 6.012 |
| 1-257 | 5 7/8 | 6 1/8 | 1/8 | 5.859 | .139 | 6.137 |
| 1-258 | 6 | 6 1/4 | 1/8 | 5.984 | .139 | 6.262 |
| 1-259 | 6 1/4 | 6 1/2 | 1/8 | 6.234 ± .040 | .139 | 6.512 |
| 1-260 | 6 1/2 | 6 3/4 | 1/8 | 6.484 | .139 | 6.762 |
| 1-261 | 6 3/4 | 7 | 1/8 | 6.734 | .139 | 7.012 |
| 1-262 | 7 | 7 1/4 | 1/8 | 6.984 ± | .139 | 7.262 |
| 1-263 | 7 1/4 | 7 1/2 | 1/8 | 7.234 ± .045 | .139 | 7.512 |
| 1-264 | 7 1/2 | 7 3/4 | 1/8 | 7.484 | .139 | 7.762 |
| 1-265 | 7 3/4 | 8 | 1/8 | 7.734 | .139 | 8.012 |
| 1-266 | 8 | 8 1/4 | 1/8 | 7.984 | .139 | 8.262 |
| 1-267 | 8 1/4 | 8 1/2 | 1/8 | 8.234 ± .050 | .139 | 8.512 |
| 1-268 | 8 1/2 | 8 3/4 | 1/8 | 8.484 | .139 | 8.762 |
| 1-269 | 8 3/4 | 9 | 1/8 | 8.734 | .139 | 9.012 |
| 1-270 | 9 | 9 1/4 | 1/8 | 8.984 | .139 | 9.262 |
| 1-271 | 9 1/4 | 9 1/2 | 1/8 | 9.234 ± .055 | .139 | 9.512 |
| 1-272 | 9 1/2 | 9 3/4 | 1/8 | 9.484 | .139 | 9.762 |
| 1-273 | 9 3/4 | 10 | 1/8 | 9.734 | .139 | 10.012 |
| 1-274 | 10 | 10 1/4 | 1/8 | 9.984 | .139 | 10.262 |
| 1-275 | 10 1/2 | 10 3/4 | 1/8 | 10.484 | .139 | 10.762 |
| 1-276 | 11 | 11 1/4 | 1/8 | 10.984 ± .065 | .139 | 11.262 |
| 1-277 | 11 1/2 | 11 3/4 | 1/8 | 11.484 | .139 | 11.762 |
| 1-278 | 12 | 12 1/4 | 1/8 | 11.984 | .139 | 12.262 |
| 1-279 | 13 | 13 1/4 | 1/8 | 12.984 | .139 | 13.262 |
| 1-280 | 14 | 14 1/4 | 1/8 | 13.984 | .139 | 14.262 |
| 1-281 | 15 | 15 1/4 | 1/8 | 14.984 | .139 | 15.262 |
| 1-282 | 16 | 16 1/4 | 1/8 | 15.955 ± .075 | .139 | 16.233 |
| 1-283 | 17 | 17 1/4 | 1/8 | 16.955 ± .080 | .139 | 17.233 |
| 1-284 | 18 | 18 1/4 | 1/8 | 17.955 ± .085 | .139 | 18.233 |
| 1-286 | 20 | 20 1/4 | 1/8 | 19.960 ± .090 | .139 | 20.238 |



O-Rings

Standard Size



| Mold IDen | Nominal Dimensions | | | Actual Dimensions | | |
|--------------|--------------------|---------|------|-------------------|-------------|----------|
| | ID | OD | C/S | ID | C/S | OD (Ref) |
| 1-514 | 1 | 1 5/16 | 5/32 | .975 ± .010 | .176 ± .005 | 1.327 |
| 1-515 | 1 1/16 | 1 3/8 | 5/32 | 1.038 | .176 | 1.390 |
| 1-516 | 1 1/8 | 1 7/16 | 5/32 | 1.100 ± .012 | .176 | 1.452 |
| 1-517 | 1 3/16 | 1 1/2 | 5/32 | 1.163 | .176 | 1.515 |
| 1-518 | 1 1/4 | 1 9/16 | 5/32 | 1.225 | .176 | 1.577 |
| 1-519 | 1 5/16 | 1 5/8 | 5/32 | 1.288 | .176 | 1.640 |
| 1-520 | 1 3/8 | 1 11/16 | 5/32 | 1.350 | .176 | 1.702 |
| 1-521 | 1 7/16 | 1 3/4 | 5/32 | 1.413 | .176 | 1.765 |
| 1-522 | 1 1/2 | 1 13/16 | 5/32 | 1.475 ± .015 | .176 | 1.827 |
| 1-524 | 1 5/8 | 1 15/16 | 5/32 | 1.600 | .176 | 1.952 |
| 1-526 | 1 3/4 | 2 1/16 | 5/32 | 1.725 | .176 | 2.077 |
| 1-528 | 1 7/8 | 2 3/16 | 5/32 | 1.850 | .176 | 2.202 |
| 1-530 | 2 | 2 5/16 | 5/32 | 1.975 ± .018 | .176 | 2.327 |
| 1-532 | 2 1/8 | 2 7/16 | 5/32 | 2.100 | .176 | 2.452 |
| 1-534 | 2 1/4 | 2 9/16 | 5/32 | 2.225 | .176 | 2.577 |
| 1-536 | 2 3/8 | 2 11/16 | 5/32 | 2.350 | .176 | 2.702 |
| 1-538 | 2 1/2 | 2 13/16 | 5/32 | 2.475 ± .020 | .176 | 2.827 |
| 1-540 | 2 5/8 | 2 15/16 | 5/32 | 2.600 | .176 | 2.952 |
| 1-542 | 2 3/4 | 3 1/16 | 5/32 | 2.725 | .176 | 3.077 |
| 1-544 | 2 7/8 | 3 3/16 | 5/32 | 2.850 | .176 | 3.202 |
| 1-546 | 3 | 3 5/16 | 5/32 | 2.975 ± .024 | .176 | 3.327 |
| 1-548 | 3 1/8 | 3 7/16 | 5/32 | 3.100 | .176 | 3.452 |
| 1-550 | 3 1/4 | 3 9/16 | 5/32 | 3.225 | .176 | 3.577 |
| 1-552 | 3 3/8 | 3 11/16 | 5/32 | 3.350 | .176 | 3.702 |
| 1-554 | 3 1/2 | 3 13/16 | 5/32 | 3.475 | .176 | 3.827 |
| 1-556 | 3 5/8 | 3 15/16 | 5/32 | 3.600 ± .028 | .176 | 3.952 |
| 1-558 | 3 3/4 | 4 1/16 | 5/32 | 3.725 | .176 | 4.077 |
| 1-560 | 3 7/8 | 4 3/16 | 5/32 | 3.850 | .176 | 4.202 |
| 1-562 | 4 | 4 5/16 | 5/32 | 3.975 | .176 | 4.327 |
| 1-563 | 4 1/8 | 4 7/16 | 5/32 | 4.100 | .176 | 4.452 |
| 1-565 | 4 1/4 | 4 9/16 | 5/32 | 4.225 ± .030 | .176 | 4.577 |
| 1-566 | 4 3/8 | 4 11/16 | 5/32 | 4.350 | .176 | 4.702 |
| 1-568 | 4 1/2 | 4 13/16 | 5/32 | 4.475 | .176 | 4.827 |
| 1-569 | 4 5/8 | 4 15/16 | 5/32 | 4.600 | .176 | 4.952 |
| 1-571 | 4 3/4 | 5 1/16 | 5/32 | 4.725 | .176 | 5.077 |
| 1-572 | 4 7/8 | 5 3/16 | 5/32 | 4.850 | .176 | 5.202 |



O-Rings

Standard Size



| Mold IDen | Nominal Dimensions | | | Actual Dimensions | | |
|-----------|--------------------|---------|------|-------------------|--------------|------------|
| | ID | OD | C/S | ID | C/S | OD (Ref) |
| 1-308 | 3/8 | 3/4 | 3/16 | .350 ± .005 | 0.210 ± .005 | 0.770 |
| 1-309 | 7/16 | 13/16 | 3/16 | .412 | 0.210 | 0.832 |
| 1-310 | 1/2 | 7/8 | 3/16 | .475 | 0.210 | 0.895 |
| 1-311 | 9/16 | 15/16 | 3/16 | .537 ± .007 | 0.210 | 0.959 |
| 1-312 | 5/8 | 1 | 3/16 | .600 ± .009 | 0.210 | 1.022 |
| 1-313 | 11/16 | 1 1/16 | 3/16 | .662 | 0.210 | 1.084 |
| 1-314 | 3/4 | 1 1/8 | 3/16 | .725 ± .010 | 0.210 | 1.147 |
| 1-315 | 13/16 | 1 3/16 | 3/16 | .787 | 0.210 | 1.209 |
| 1-316 | 7/8 | 1 1/4 | 3/16 | .850 | 0.210 | 1.270+Q537 |
| 1-317 | 15/16 | 1 5/16 | 3/16 | .912 ± .010 | 0.210 | 1.334 |
| 1-318 | 1 | 1 3/8 | 3/16 | .975 | 0.210 | 1.395 |
| 1-319 | 1 1/16 | 1 7/16 | 3/16 | 1.037 | 0.210 | 1.457 |
| 1-320 | 1 1/8 | 1 1/2 | 3/16 | 1.100 ± .012 | 0.210 | 1.520 |
| 1-321 | 1 3/16 | 1 9/16 | 3/16 | 1.162 | 0.210 | 1.582 |
| 1-322 | 1 1/4 | 1 5/8 | 3/16 | 1.225 | 0.210 | 1.645 |
| 1-323 | 1 5/16 | 1 11/16 | 3/16 | 1.287 | 0.210 | 1.707 |
| 1-324 | 1 3/8 | 1 3/4 | 3/16 | 1.350 | 0.210 | 1.770 |
| 1-325 | 1 1/2 | 1 7/8 | 3/16 | 1.475 ± .015 | 0.210 | 1.895 |
| 1-326 | 1 5/8 | 2 | 3/16 | 1.600 | 0.210 | 2.020 |
| 1-327 | 1 3/4 | 2 1/8 | 3/16 | 1.725 | 0.210 | 2.145 |
| 1-328 | 1 7/8 | 2 1/4 | 3/16 | 1.850 | 0.210 | 2.270 |
| 1-329 | 2 | 2 3/8 | 3/16 | 1.975 ± .018 | 0.210 | 2.395 |
| 1-330 | 2 1/8 | 2 1/2 | 3/16 | 2.100 | 0.210 | 2.520 |
| 1-331 | 2 1/4 | 2 5/8 | 3/16 | 2.225 | 0.210 | 2.645 |
| 1-332 | 2 3/8 | 2 3/4 | 3/16 | 2.350 | 0.210 | 2.770 |
| 1-333 | 2 1/2 | 2 7/8 | 3/16 | 2.475 ± .020 | 0.210 | 2.895 |
| 1-334 | 2 5/8 | 3 | 3/16 | 2.600 | 0.210 | 3.020 |
| 1-335 | 2 3/4 | 3 1/8 | 3/16 | 2.725 | 0.210 | 3.145 |
| 1-336 | 2 7/8 | 3 1/4 | 3/16 | 2.850 | 0.210 | 3.270 |
| 1-337 | 3 | 3 3/8 | 3/16 | 2.975 ± .024 | 0.210 | 3.395 |
| 1-338 | 3 1/8 | 3 1/2 | 3/16 | 3.100 | 0.210 | 3.520 |
| 1-339 | 3 1/4 | 3 5/8 | 3/16 | 3.225 | 0.210 | 3.645 |
| 1-340 | 3 3/8 | 3 3/4 | 3/16 | 3.350 | 0.210 | 3.770 |
| 1-341 | 3 1/2 | 3 7/8 | 3/16 | 3.475 | 0.210 | 3.895 |
| 1-342 | 3 5/8 | 4 | 3/16 | 3.600 ± .028 | 0.210 | 4.020 |
| 1-343 | 3 3/4 | 4 1/8 | 3/16 | 3.725 | 0.210 | 4.145 |
| 1-344 | 3 7/8 | 4 1/4 | 3/16 | 3.850 | 0.210 | 4.270 |
| 1-345 | 4 | 4 3/8 | 3/16 | 3.975 | 0.210 | 4.395 |
| 1-346 | 4 1/8 | 4 1/2 | 3/16 | 4.100 | 0.210 | 4.520 |
| 1-347 | 4 1/4 | 4 5/8 | 3/16 | 4.225 ± .030 | 0.210 | 4.645 |
| 1-348 | 4 3/8 | 4 3/4 | 3/16 | 4.350 | 0.210 | 4.770 |
| 1-349 | 4 1/2 | 4 7/8 | 3/16 | 4.475 | 0.210 | 4.895 |
| 1-350 | 4 5/8 | 5 | 3/16 | 4.600 | 0.210 | 5.020 |
| 1-351 | 4 3/4 | 5 1/8 | 3/16 | 4.725 | 0.210 | 5.145 |
| 1-352 | 4 7/8 | 5 1/4 | 3/16 | 4.850 ± .037 | 0.210 | 5.270 |

Precision Associates, Inc.
3800 N. Washington Ave.
Minneapolis, MN 55412

Phone: 612-333-7464
Fax: 612-342-2417
Toll: 800-394-6590

www.PrecisionAssoc.com



O-Rings

Standard Size



| Mold IDen | Nominal Dimensions | | | Actual Dimensions | | |
|-----------|--------------------|--------|------|-------------------|--------------|----------|
| | ID | OD | C/S | ID | C/S | OD (Ref) |
| 1-353 | 5 | 5 3/8 | 3/16 | 4.975 ± .037 | 0.210 ± .005 | 5.395 |
| 1-354 | 5 1/8 | 5 1/2 | 3/16 | 5.100 | 0.210 | 5.520 |
| 1-355 | 5 1/4 | 5 5/8 | 3/16 | 5.225 | 0.210 | 5.645 |
| 1-356 | 5 3/8 | 5 3/4 | 3/16 | 5.350 | 0.210 | 5.770 |
| 1-357 | 5 1/2 | 5 7/8 | 3/16 | 5.475 | 0.210 | 5.895 |
| 1-358 | 5 5/8 | 6 | 3/16 | 5.600 | 0.210 | 6.020 |
| 1-359 | 5 3/4 | 6 1/8 | 3/16 | 5.725 | 0.210 | 6.145 |
| 1-360 | 5 7/8 | 6 1/4 | 3/16 | 5.850 ± .037 | 0.210 | 6.270 |
| 1-361 | 6 | 6 3/8 | 3/16 | 5.975 | 0.210 | 6.395 |
| 1-362 | 6 1/4 | 6 5/8 | 3/16 | 6.225 ± .040 | 0.210 | 6.645 |
| 1-363 | 6 1/2 | 6 7/8 | 3/16 | 6.475 | 0.210 | 6.895 |
| 1-364 | 6 3/4 | 7 1/8 | 3/16 | 6.725 | 0.210 | 7.145 |
| 1-365 | 7 | 7 3/8 | 3/16 | 6.975 | 0.210 | 7.395 |
| 1-366 | 7 1/4 | 7 5/8 | 3/16 | 7.225 ± .045 | 0.210 | 7.645 |
| 1-367 | 7 1/2 | 7 7/8 | 3/16 | 7.475 | 0.210 | 7.895 |
| 1-368 | 7 3/4 | 8 1/8 | 3/16 | 7.725 | 0.210 | 8.145 |
| 1-369 | 8 | 8 3/8 | 3/16 | 7.975 | 0.210 | 8.395 |
| 1-370 | 8 1/4 | 8 5/8 | 3/16 | 8.225 ± .050 | 0.210 | 8.645 |
| 1-371 | 8 1/2 | 8 7/8 | 3/16 | 8.475 | 0.210 | 8.895 |
| 1-372 | 8 3/4 | 9 1/8 | 3/16 | 8.725 | 0.210 | 9.145 |
| 1-373 | 9 | 9 3/8 | 3/16 | 8.975 | 0.210 | 9.395 |
| 1-374 | 9 1/4 | 9 5/8 | 3/16 | 9.225 ± .055 | 0.210 | 9.645 |
| 1-375 | 9 1/2 | 9 7/8 | 3/16 | 9.475 | 0.210 | 9.895 |
| 1-376 | 9 3/4 | 10 1/8 | 3/16 | 9.725 | 0.210 | 10.145 |
| 1-377 | 10 | 10 3/8 | 3/16 | 9.975 | 0.210 | 10.395 |
| 1-378 | 10 1/2 | 10 7/8 | 3/16 | 10.475 ± .060 | 0.210 | 10.895 |
| 1-379 | 11 | 11 3/8 | 3/16 | 10.975 | 0.210 | 11.395 |
| 1-380 | 11 1/2 | 11 7/8 | 3/16 | 11.475 ± .065 | 0.210 | 11.895 |
| 1-381 | 12 | 12 3/8 | 3/16 | 11.975 | 0.210 | 12.395 |
| 1-382 | 13 | 13 3/8 | 3/16 | 12.975 | 0.210 | 13.395 |
| 1-383 | 14 | 14 3/8 | 3/16 | 13.975 ± .070 | 0.210 | 14.395 |
| 1-384 | 15 | 15 3/8 | 3/16 | 14.975 | 0.210 | 15.395 |
| 1-385 | 16 | 16 3/8 | 3/16 | 15.955 ± .075 | 0.210 | 16.375 |
| 1-386 | 17 | 17 3/8 | 3/16 | 16.955 ± .080 | 0.210 | 17.375 |
| 1-387 | 18 | 18 3/8 | 3/16 | 17.955 ± .085 | 0.210 | 18.375 |
| 1-388 | 19 | 19 3/8 | 3/16 | 18.955 ± .090 | 0.210 | 19.375 |
| 1-389 | 20 | 20 3/8 | 3/16 | 19.955 ± .095 | 0.210 | 20.375 |
| 1-390 | 21 | 21 3/8 | 3/16 | 20.955 | 0.210 | 21.375 |
| 1-391 | 22 | 22 3/8 | 3/16 | 21.955 ± .100 | 0.210 | 22.373 |
| 1-392 | 23 | 23 3/8 | 3/16 | 22.940 ± .105 | 0.210 | 23.360 |
| 1-393 | 24 | 24 3/8 | 3/16 | 23.940 ± .110 | 0.210 | 24.360 |
| 1-394 | 25 | 25 3/8 | 3/16 | 24.940 ± .115 | 0.210 | 25.360 |
| 1-395 | 26 | 26 3/8 | 3/16 | 25.940 ± .120 | 0.210 | 26.360 |
| 1-396 | 27 | 27 3/8 | 3/16 | 26.940 | 0.210 | 27.360 |



O-Rings

Standard Size



| Mold IDen | Nominal Dimensions | | | Actual Dimensions | | |
|-----------|--------------------|-------|-----|-------------------|-------------|----------|
| | ID | OD | C/S | ID | C/S | OD (Ref) |
| 1-400 | 1 3/8 | 1 7/8 | 1/4 | 1.350 ± .012 | .275 ± .006 | 1.900 |
| 1-401 | 1 1/2 | 2 | 1/4 | 1.475 ± .015 | .275 | 2.025 |
| 1-402 | 1 5/8 | 2 1/8 | 1/4 | 1.600 | .275 | 2.150 |
| 1-403 | 1 3/4 | 2 1/4 | 1/4 | 1.725 | .275 | 2.275 |
| 1-404 | 1 7/8 | 2 3/8 | 1/4 | 1.850 | .275 | 2.400 |
| 1-405 | 2 | 2 1/2 | 1/4 | 1.975 ± .018 | .275 | 2.525 |
| 1-406 | 2 1/8 | 2 5/8 | 1/4 | 2.100 ± .018 | .275 | 2.650 |
| 1-407 | 2 1/4 | 2 3/4 | 1/4 | 2.225 | .275 | 2.775 |
| 1-408 | 2 3/8 | 2 7/8 | 1/4 | 2.350 | .275 | 2.900 |
| 1-409 | 2 1/2 | 3 | 1/4 | 2.475 ± .020 | .275 | 3.025 |
| 1-410 | 2 5/8 | 3 1/8 | 1/4 | 2.600 | .275 | 3.150 |
| 1-411 | 2 3/4 | 3 1/4 | 1/4 | 2.725 | .275 | 3.275 |
| 1-412 | 2 7/8 | 3 3/8 | 1/4 | 2.850 | .275 | 3.400 |
| 1-413 | 3 | 3 1/2 | 1/4 | 2.975 ± .024 | .275 | 3.525 |
| 1-414 | 3 1/8 | 3 5/8 | 1/4 | 3.100 | .275 | 3.650 |
| 1-415 | 3 1/4 | 3 3/4 | 1/4 | 3.225 | .275 | 3.775 |
| 1-416 | 3 3/8 | 3 7/8 | 1/4 | 3.350 | .275 | 3.900 |
| 1-417 | 3 1/2 | 4 | 1/4 | 3.475 | .275 | 4.025 |
| 1-418 | 3 5/8 | 4 1/8 | 1/4 | 3.600 ± .028 | .275 | 4.150 |
| 1-419 | 3 3/4 | 4 1/4 | 1/4 | 3.725 | .275 | 4.275 |
| 1-420 | 3 7/8 | 4 3/8 | 1/4 | 3.850 | .275 | 4.400 |
| 1-421 | 4 | 4 1/2 | 1/4 | 3.975 | .275 | 4.525 |
| 1-422 | 4 1/8 | 4 5/8 | 1/4 | 4.100 | .275 | 4.650 |
| 1-423 | 4 1/4 | 4 3/4 | 1/4 | 4.225 ± .030 | .275 | 4.775 |
| 1-424 | 4 3/8 | 4 7/8 | 1/4 | 4.350 | .275 | 4.900 |
| 1-425 | 4 1/2 | 5 | 1/4 | 4.475 ± .033 | .275 | 5.025 |
| 1-426 | 4 5/8 | 5 1/8 | 1/4 | 4.600 | .275 | 5.150 |
| 1-427 | 4 3/4 | 5 1/4 | 1/4 | 4.725 | .275 | 5.275 |
| 1-428 | 4 7/8 | 5 3/8 | 1/4 | 4.850 | .275 | 5.400 |
| 1-429 | 5 | 5 1/2 | 1/4 | 4.975 ± .037 | .275 | 5.525 |
| 1-430 | 5 1/8 | 5 5/8 | 1/4 | 5.100 | .275 | 5.650 |
| 1-431 | 5 1/4 | 5 3/4 | 1/4 | 5.225 | .275 | 5.775 |
| 1-432 | 5 3/8 | 5 7/8 | 1/4 | 5.350 | .275 | 5.900 |
| 1-433 | 5 1/2 | 6 | 1/4 | 5.475 | .275 | 6.025 |
| 1-434 | 5 5/8 | 6 1/8 | 1/4 | 5.600 | .275 | 6.150 |
| 1-435 | 5 3/4 | 6 1/4 | 1/4 | 5.725 | .275 | 6.275 |
| 1-436 | 5 7/8 | 6 3/8 | 1/4 | 5.850 | .275 | 6.400 |
| 1-437 | 6 | 6 1/2 | 1/4 | 5.975 | .275 | 6.525 |
| 1-438 | 6 1/4 | 6 3/4 | 1/4 | 6.225 ± .040 | .275 | 6.775 |
| 1-439 | 6 1/2 | 7 | 1/4 | 6.475 | .275 | 7.025 |
| 1-440 | 6 3/4 | 7 1/4 | 1/4 | 6.725 | .275 | 7.275 |
| 1-441 | 7 | 7 1/2 | 1/4 | 6.975 | .275 | 7.525 |
| 1-442 | 7 1/4 | 7 3/4 | 1/4 | 7.225 ± .045 | .275 | 7.775 |



O-Rings

Standard Size



| Mold IDen | Nominal Dimensions | | | Actual Dimensions | | |
|-----------|--------------------|--------|-----|-------------------|-------------|----------|
| | ID | OD | C/S | ID | C/S | OD (Ref) |
| 1-443 | 7 1/2 | 8 | 1/4 | 7.475 ± .045 | .275 ± .006 | 8.025 |
| 1-444 | 7 3/4 | 8 1/4 | 1/4 | 7.725 | .275 | 8.275 |
| 1-445 | 8 | 8 1/2 | 1/4 | 7.975 | .275 | 8.525 |
| 1-446 | 8 1/2 | 9 | 1/4 | 8.475 ± .055 | .275 | 9.025 |
| 1-447 | 9 | 9 1/2 | 1/4 | 8.975 | .275 | 9.525 |
| 1-448 | 9 1/2 | 10 | 1/4 | 9.475 | .275 | 10.025 |
| 1-449 | 10 | 10 1/2 | 1/4 | 9.975 ± .055 | .275 | 10.525 |
| 1-450 | 10 1/2 | 11 | 1/4 | 10.475 ± .060 | .275 | 11.025 |
| 1-451 | 11 | 11 1/2 | 1/4 | 10.975 | .275 | 11.525 |
| 1-452 | 11 1/2 | 12 | 1/4 | 11.475 | .275 | 12.025 |
| 1-453 | 12 | 12 1/2 | 1/4 | 11.975 | .275 | 12.525 |
| 1-454 | 12 1/2 | 13 | 1/4 | 12.475 | .275 | 13.025 |
| 1-455 | 13 | 13 1/2 | 1/4 | 12.975 | .275 | 13.525 |
| 1-456 | 13 1/2 | 14 | 1/4 | 13.475 ± .070 | .275 | 14.025 |
| 1-457 | 14 | 14 1/2 | 1/4 | 13.975 | .275 | 14.525 |
| 1-458 | 14 1/2 | 15 | 1/4 | 14.475 | .275 | 15.025 |
| 1-459 | 15 | 15 1/2 | 1/4 | 14.975 | .275 | 15.525 |
| 1-460 | 15 1/2 | 16 | 1/4 | 15.475 | .275 | 16.025 |
| 1-461 | 16 | 16 1/2 | 1/4 | 15.955 ± .075 | .275 | 16.505 |
| 1-462 | 16 1/2 | 17 | 1/4 | 16.455 | .275 | 17.005 |
| 1-463 | 17 | 17 1/2 | 1/4 | 16.955 ± .080 | .275 | 17.505 |
| 1-464 | 17 1/2 | 18 | 1/4 | 17.455 ± .085 | .275 | 18.005 |
| 1-465 | 18 | 18 1/2 | 1/4 | 17.955 | .275 | 18.505 |
| 1-466 | 18 1/2 | 19 | 1/4 | 18.455 | .275 | 19.005 |
| 1-467 | 19 | 19 1/2 | 1/4 | 18.955 ± .090 | .275 | 19.505 |
| 1-468 | 19 1/2 | 20 | 1/4 | 19.455 | .275 | 20.005 |
| 1-469 | 20 | 20 1/2 | 1/4 | 19.955 ± .095 | .275 | 20.505 |
| 1-470 | 21 | 21 1/2 | 1/4 | 20.955 | .275 | 21.505 |
| 1-471 | 22 | 22 1/2 | 1/4 | 21.955 ± .100 | .275 | 22.505 |
| 1-472 | 23 | 23 1/2 | 1/4 | 22.940 ± .105 | .275 | 23.490 |
| 1-473 | 24 | 24 1/2 | 1/4 | 23.940 ± .110 | .275 | 24.490 |
| 1-474 | 25 | 25 1/2 | 1/4 | 24.940 ± .115 | .275 | 25.490 |
| 1-475 | 26 | 26 1/2 | 1/4 | 25.940 ± .120 | .275 | 26.490 |
| 1-476 | 27 | 27 1/2 | 1/4 | 26.955 | .275 | 27.505 |



O-Rings Tube & Boss



| Mold IDen | Tube Size | Actual Dimensions | | |
|-----------|-----------|-------------------|-------------|----------|
| | | ID | C/S | OD (Ref) |
| 1-901 | 3/32 | .185 ± .005 | .056 ± .003 | 0.297 |
| 1-902 | 1/8 | .239 | .064 | 0.367 |
| 1-903 | 3/16 | .301 | .064 | 0.429 |
| 1-904 | 1/4 | .351 | .072 | 0.495 |
| 1-905 | 5/16 | .414 | .072 | 0.558 |
| 1-906 | 3/8 | .468 | .078 | 0.624 |
| 1-907 | 7/16 | .530 ± .007 | .082 | 0.694 |
| 1-908 | 1/2 | .644 ± .009 | .087 | 0.818 |
| 1-909 | 9/16 | .706 | .097 | 0.900 |
| 1-910 | 5/8 | .755 | .097 | 0.949 |
| 1-911 | 11/16 | .863 | .116 ± .004 | 1.095 |
| 1-912 | 3/4 | .924 | .116 | 1.156 |
| 1-913 | 13/16 | .986 ± .010 | .116 | 1.218 |
| 1-914 | 7/8 | 1.047 | .116 | 1.279 |
| 1-915 | 15/16 | 1.109 | .116 | 1.341 |
| 1-916 | 1 | 1.171 | .116 | 1.403 |
| 1-918 | 1 1/8 | 1.355 ± .012 | .116 | 1.587 |
| 1-920 | 1 1/4 | 1.475 | .118 | 1.711 |
| 1-924 | 1 1/2 | 1.720 ± .015 | .118 | 1.956 |
| 1-928 | 1 3/4 | 2.090 ± .018 | .118 | 2.326 |
| 1-932 | 2 | 2.337 | .118 | 2.573 |



O-Rings Standard Size



Back by popular demand! Precision Associates has re-created the full size line drawings of our standard O-Rings. Samples of 1/8" and 5/32" Cross Sections are shown below. Call customer service to request your copy, or download a set today from our websites at: <http://www.PrecisionAssoc.com> or <http://www.PAICustomers.com>.

O-Rings Standard Size
5/32 Cross Section

O-Rings Standard Size
1/8 Cross Section

| Mold ID/en | Nominal Dimensions | | | Actual Dimensions | | O.D. (Ref) | Specification |
|------------|--------------------|--------|-----|-------------------|------------|------------|---------------|
| | I.D. | O.D. | C/S | I.D. | C/S | | |
| 1-201 | 3/16 | 7/16 | 1/8 | .171 ±.005 | .139 ±.004 | .449 | AS568-201 |
| 1-202 | 1/4 | 1/2 | 1/8 | .234 | .139 | .512 | AS568-202 |
| 1-203 | 5/16 | 9/16 | 1/8 | .301 | .139 | .579 | AS568-203 |
| 1-204 | 3/8 | 5/8 | 1/8 | .369 | .139 | .637 | AS568-204 |
| 1-205 | 7/16 | 11/16 | 1/8 | .421 | .139 | .699 | AS568-205 |
| 1-206 | 1/2 | 3/4 | 1/8 | .484 | .139 | .762 | AS568-206 |
| 1-207 | 9/16 | 13/16 | 1/8 | .549 ±.007 | .139 | .827 | AS568-207 |
| 1-208 | 5/8 | 7/8 | 1/8 | .609 ±.009 | .139 | .887 | AS568-208 |
| 1-209 | 11/16 | 15/16 | 1/8 | .672 | .139 | .950 | AS568-209 |
| 1-210 | 3/4 | 1 | 1/8 | .734 ±.010 | .139 | 1.012 | AS568-210 |
| 1-211 | 13/16 | 1 1/16 | 1/8 | .796 | .139 | 1.074 | AS568-211 |
| 1-212 | 7/8 | 1 1/8 | 1/8 | .859 | .139 | 1.137 | AS568-212 |
| 1-213 | 15/16 | 1 3/16 | 1/8 | .921 | .139 | 1.199 | AS568-213 |
| 1-214 | 1 | 1 1/4 | 1/8 | .984 | .139 | 1.262 | AS568-214 |
| 1-215 | 1 1/16 | 1 5/16 | 1/8 | 1.046 | .139 | 1.324 | AS568-215 |
| 1-216 | 1 1/8 | 1 3/8 | 1/8 | 1.109 ±.012 | .139 | 1.387 | AS568-216 |
| 1-217 | 1 3/16 | 1 7/16 | 1/8 | 1.171 | .139 | 1.449 | AS568-217 |

Use Scale below to verify dimensional integrity

Precision Associates, Inc.
740 N. Washington Ave.
Minneapolis, MN 55401
© Copyright 1972-2006 Precision Associates, Inc.

Phone: (612) 333-7464
Fax: (612) 342-2417
Toll: (800) 394-6590

www.PrecisionAssoc.com



O-Rings Special Size



Precision Associates has one of the industries largest collections of special size O-Ring tools. Currently we have over 2,600 different size O-Rings in production. On average, we add a new size each week. To keep up on all of the new sizes, please check out our website at www.PrecisionAssoc.com.

The O-Rings listed here are in order by Inside Diameter (ID) and then Cross Section (C/S). You may also want to reference our Engineer's Guide. It has all of PAI's O-Rings, including Standard Sizes listed in ascending order by OD, with tolerances and volumetric data. If you still can't find the O-Ring to fit your special need, please call our engineering department. Our On-Site Mold Shop can produce a mold in short order at a very reasonable cost.

| Mold IDen | C/S | ID | OD (Ref) |
|-----------|-------|-------|----------|
| 4-4 | 0.004 | 0.004 | 0.012 |
| 6-8 | 0.006 | 0.008 | 0.020 |
| 10-10 | 0.010 | 0.010 | 0.030 |
| 25-10 | 0.025 | 0.010 | 0.060 |
| 50-10 | 0.050 | 0.010 | 0.110 |
| 93-10ES | 0.094 | 0.010 | 0.198 |
| 14-12 | 0.014 | 0.012 | 0.040 |
| 38-14 | 0.038 | 0.014 | 0.090 |
| 59-15 | 0.059 | 0.015 | 0.133 |
| 93-15ES | 0.095 | 0.015 | 0.205 |
| 15-16 | 0.015 | 0.016 | 0.046 |
| 20-17 | 0.020 | 0.017 | 0.057 |
| 40-17 | 0.040 | 0.017 | 0.097 |
| 35-18 | 0.035 | 0.018 | 0.088 |
| 20-20 | 0.020 | 0.020 | 0.060 |
| 29-22 | 0.029 | 0.022 | 0.080 |
| 30-23 | 0.030 | 0.023 | 0.083 |
| 40-23 | 0.040 | 0.023 | 0.103 |
| 20-24 | 0.020 | 0.024 | 0.064 |
| 13-25VS | 0.013 | 0.025 | 0.051 |
| 16-28 | 0.016 | 0.028 | 0.060 |
| 48-28 | 0.048 | 0.028 | 0.124 |
| 121-029 | 0.121 | 0.029 | 0.271 |
| 17-30 | 0.017 | 0.030 | 0.064 |
| 20-30 | 0.020 | 0.030 | 0.070 |
| 31-31ES | 0.031 | 0.031 | 0.093 |
| 27-32 | 0.027 | 0.032 | 0.086 |
| 87-33VS | 0.088 | 0.033 | 0.209 |
| 15-34 | 0.015 | 0.034 | 0.064 |
| 45-35 | 0.045 | 0.035 | 0.125 |
| 86-37 | 0.086 | 0.037 | 0.209 |
| 19-38 | 0.019 | 0.038 | 0.076 |
| 32-39 | 0.032 | 0.039 | 0.103 |
| 73-40 | 0.073 | 0.040 | 0.186 |
| 23-41 | 0.023 | 0.041 | 0.087 |
| 42-42 | 0.042 | 0.042 | 0.126 |
| 31-43 | 0.031 | 0.043 | 0.105 |

| Mold IDen | C/S | ID | OD (Ref) |
|-----------|-------|-------|----------|
| 17-44 | 0.017 | 0.044 | 0.078 |
| 31-43SS | 0.031 | 0.044 | 0.106 |
| 32-44VS | 0.032 | 0.044 | 0.108 |
| 20-45 | 0.020 | 0.045 | 0.085 |
| 43-45VS | 0.043 | 0.045 | 0.131 |
| 34-46 | 0.034 | 0.046 | 0.114 |
| 16-47 | 0.016 | 0.047 | 0.079 |
| 31-47 | 0.031 | 0.047 | 0.109 |
| 36-47 | 0.036 | 0.047 | 0.119 |
| 7-48VS | 0.007 | 0.048 | 0.062 |
| 74-47NS | 0.074 | 0.048 | 0.195 |
| 35-50 | 0.035 | 0.050 | 0.120 |
| 59-49VS | 0.060 | 0.050 | 0.170 |
| 62-50 | 0.062 | 0.050 | 0.174 |
| 12-51VS | 0.012 | 0.051 | 0.075 |
| 34-53 | 0.034 | 0.053 | 0.121 |
| 64-53 | 0.064 | 0.053 | 0.181 |
| 80-54 | 0.080 | 0.054 | 0.214 |
| 24-55SS | 0.024 | 0.055 | 0.103 |
| 32-55 | 0.032 | 0.055 | 0.119 |
| 42-55 | 0.042 | 0.055 | 0.139 |
| 50-55NS | 0.050 | 0.055 | 0.155 |
| 40-57 | 0.040 | 0.057 | 0.137 |
| 94-57 | 0.094 | 0.057 | 0.245 |
| 40-59SS | 0.040 | 0.060 | 0.140 |
| 56-60 | 0.056 | 0.060 | 0.172 |
| 76-60 | 0.076 | 0.060 | 0.212 |
| 65-60SS | 0.066 | 0.061 | 0.193 |
| 32-62 | 0.032 | 0.062 | 0.126 |
| 47-62 | 0.047 | 0.062 | 0.156 |
| 56-61VS | 0.056 | 0.062 | 0.174 |
| 66-61VS | 0.067 | 0.062 | 0.196 |
| 22-63 | 0.022 | 0.063 | 0.107 |
| 63-63ES | 0.063 | 0.063 | 0.189 |
| 17-65 | 0.017 | 0.065 | 0.099 |
| 35-65 | 0.035 | 0.065 | 0.135 |
| 44-65 | 0.044 | 0.065 | 0.153 |



O-Rings Special Size



| Mold IDen | C/S | ID | OD (Ref) |
|-----------|-------|-------|----------|
| 20-66 | 0.020 | 0.066 | 0.106 |
| 12-67VS | 0.012 | 0.068 | 0.092 |
| 31-67SS | 0.031 | 0.068 | 0.130 |
| 25-70 | 0.025 | 0.070 | 0.120 |
| 30-70 | 0.030 | 0.070 | 0.130 |
| 34-70 | 0.034 | 0.070 | 0.138 |
| 109-70 | 0.109 | 0.070 | 0.288 |
| 133-70 | 0.133 | 0.070 | 0.336 |
| 17-72VS | 0.017 | 0.073 | 0.107 |
| 21-74 | 0.021 | 0.074 | 0.116 |
| 53-74 | 0.053 | 0.074 | 0.180 |
| 35-75 | 0.035 | 0.075 | 0.145 |
| 47-71VS | 0.047 | 0.075 | 0.169 |
| 29-76 | 0.029 | 0.076 | 0.134 |
| 30-78 | 0.030 | 0.078 | 0.138 |
| 49-78 | 0.049 | 0.078 | 0.176 |
| 56-78 | 0.056 | 0.078 | 0.190 |
| 24-78SS | 0.024 | 0.079 | 0.127 |
| 39-79 | 0.039 | 0.079 | 0.157 |
| 33-78SS | 0.034 | 0.080 | 0.148 |
| 85-80 | 0.085 | 0.080 | 0.250 |
| 28-81 | 0.028 | 0.081 | 0.137 |
| 59-79VS | 0.060 | 0.081 | 0.201 |
| 18-81ES | 0.018 | 0.082 | 0.118 |
| 42-82 | 0.043 | 0.082 | 0.168 |
| 23-84 | 0.023 | 0.084 | 0.130 |
| 48-84 | 0.048 | 0.084 | 0.180 |
| 55-85 | 0.055 | 0.085 | 0.195 |
| 75-85 | 0.075 | 0.085 | 0.235 |
| 93-085 | 0.093 | 0.085 | 0.271 |
| 34-86 | 0.034 | 0.086 | 0.154 |
| 20-87 | 0.020 | 0.087 | 0.127 |
| 40-87 | 0.040 | 0.087 | 0.167 |
| 47-87 | 0.047 | 0.087 | 0.181 |
| 81-87 | 0.081 | 0.087 | 0.249 |
| 70-87 | 0.071 | 0.088 | 0.230 |
| 36-89 | 0.036 | 0.089 | 0.161 |
| 13-89SS | 0.013 | 0.090 | 0.116 |
| 20-90 | 0.020 | 0.090 | 0.130 |
| 25-90 | 0.025 | 0.090 | 0.140 |
| 39-91ES | 0.039 | 0.092 | 0.170 |
| 28-94 | 0.028 | 0.094 | 0.150 |
| 50-94 | 0.050 | 0.094 | 0.194 |
| 63-94 | 0.063 | 0.094 | 0.220 |
| 50-94VS | 0.051 | 0.096 | 0.198 |

| Mold IDen | C/S | ID | OD (Ref) |
|-----------|-------|-------|----------|
| 26-97 | 0.026 | 0.097 | 0.149 |
| 44-97 | 0.044 | 0.097 | 0.185 |
| 23-98 | 0.023 | 0.098 | 0.144 |
| 30-98 | 0.030 | 0.098 | 0.158 |
| 72-97VS | 0.072 | 0.098 | 0.242 |
| 70-98SS | 0.071 | 0.099 | 0.241 |
| 18-100 | 0.018 | 0.100 | 0.136 |
| 25-100 | 0.025 | 0.100 | 0.150 |
| 38-100 | 0.038 | 0.100 | 0.176 |
| 60-100 | 0.060 | 0.100 | 0.220 |
| 35-100SS | 0.035 | 0.101 | 0.171 |
| 51-102 | 0.051 | 0.102 | 0.204 |
| 75-102 | 0.075 | 0.102 | 0.252 |
| 30-103 | 0.030 | 0.103 | 0.163 |
| 45-105 | 0.045 | 0.105 | 0.195 |
| 34-106 | 0.034 | 0.106 | 0.174 |
| 42-105ES | 0.042 | 0.106 | 0.190 |
| 10-107 | 0.010 | 0.107 | 0.127 |
| 70-108 | 0.070 | 0.108 | 0.248 |
| 40-109 | 0.040 | 0.109 | 0.189 |
| 133-109 | 0.133 | 0.109 | 0.375 |
| 139-109 | 0.139 | 0.109 | 0.387 |
| 20-110 | 0.020 | 0.110 | 0.150 |
| 28-110 | 0.028 | 0.110 | 0.166 |
| 51-110 | 0.051 | 0.110 | 0.212 |
| 32-110VS | 0.032 | 0.111 | 0.175 |
| 60-111 | 0.060 | 0.111 | 0.231 |
| 70-113ES | 0.070 | 0.113 | 0.253 |
| 47-114 | 0.047 | 0.114 | 0.208 |
| 68-113VS | 0.068 | 0.114 | 0.250 |
| 40-117 | 0.040 | 0.117 | 0.197 |
| 25-117VS | 0.025 | 0.118 | 0.168 |
| 42-117 | 0.042 | 0.118 | 0.202 |
| 40-118VS | 0.040 | 0.119 | 0.199 |
| 30-118VS | 0.030 | 0.120 | 0.180 |
| 34-118SS | 0.035 | 0.120 | 0.190 |
| 50-120 | 0.050 | 0.120 | 0.220 |
| 80-120 | 0.080 | 0.120 | 0.280 |
| 63-122VS | 0.064 | 0.124 | 0.252 |
| 31-125 | 0.031 | 0.125 | 0.187 |
| 36-125 | 0.036 | 0.125 | 0.197 |
| 62-125 | 0.062 | 0.125 | 0.249 |
| 70-125 | 0.070 | 0.125 | 0.265 |
| 20-125VS | 0.020 | 0.126 | 0.166 |
| 40-126SS | 0.040 | 0.127 | 0.207 |

Precision Associates, Inc.

3800 N. Washington Ave.
Minneapolis, MN 55412

16

Phone: 612-333-7464

Fax: 612-342-2417

Toll: 800-394-6590

www.PrecisionAssoc.com



O-Rings Special Size



| Mold IDen | C/S | ID | OD (Ref) |
|------------|-------|-------|----------|
| 56-125VS | 0.057 | 0.127 | 0.241 |
| 50-129 | 0.050 | 0.129 | 0.229 |
| 70-127SS | 0.071 | 0.129 | 0.271 |
| 25-130 | 0.025 | 0.130 | 0.180 |
| 35-130 | 0.035 | 0.130 | 0.200 |
| 95-130 | 0.095 | 0.130 | 0.320 |
| 187-130ES | 0.188 | 0.130 | 0.506 |
| 29-134 | 0.029 | 0.134 | 0.192 |
| 32-133SS | 0.032 | 0.134 | 0.198 |
| 60-134 | 0.060 | 0.134 | 0.254 |
| 75-134 | 0.075 | 0.134 | 0.284 |
| 88-135 | 0.088 | 0.135 | 0.311 |
| 40-136 | 0.040 | 0.136 | 0.216 |
| 58-133SS | 0.059 | 0.136 | 0.254 |
| 25-137SS | 0.025 | 0.138 | 0.188 |
| 36-138 | 0.036 | 0.138 | 0.210 |
| 59-138 | 0.059 | 0.138 | 0.256 |
| 79-138 | 0.079 | 0.138 | 0.296 |
| 48-140 | 0.048 | 0.140 | 0.236 |
| 50-140 | 0.050 | 0.140 | 0.240 |
| 30-140SS | 0.030 | 0.141 | 0.201 |
| 94-142 | 0.094 | 0.142 | 0.330 |
| 27-143 | 0.027 | 0.143 | 0.197 |
| 25-144 | 0.025 | 0.144 | 0.194 |
| 80-145NS | 0.080 | 0.144 | 0.304 |
| 12-145 | 0.012 | 0.145 | 0.169 |
| 23-144 | 0.023 | 0.145 | 0.191 |
| 76-145 | 0.076 | 0.145 | 0.297 |
| 80-145 | 0.080 | 0.145 | 0.305 |
| 31-146 | 0.031 | 0.146 | 0.208 |
| 150-145SVS | 0.151 | 0.146 | 0.448 |
| 40-147 | 0.040 | 0.147 | 0.227 |
| 71-147 | 0.071 | 0.147 | 0.289 |
| 20-150 | 0.020 | 0.150 | 0.190 |
| 43-150 | 0.043 | 0.150 | 0.236 |
| 22-150ES | 0.022 | 0.151 | 0.195 |
| 23-150ES | 0.023 | 0.151 | 0.197 |
| 36-152 | 0.036 | 0.152 | 0.224 |
| 46-152 | 0.046 | 0.152 | 0.244 |
| 70-145SS | 0.073 | 0.152 | 0.298 |
| 139-152 | 0.139 | 0.152 | 0.430 |
| 32-154 | 0.032 | 0.154 | 0.218 |
| 50-154 | 0.050 | 0.154 | 0.254 |
| 160-155 | 0.160 | 0.155 | 0.475 |
| 18-156 | 0.018 | 0.156 | 0.192 |

| Mold IDen | C/S | ID | OD (Ref) |
|-----------|-------|-------|----------|
| 39-154SS | 0.039 | 0.156 | 0.234 |
| 38-157 | 0.038 | 0.157 | 0.233 |
| 30-157VS | 0.030 | 0.158 | 0.218 |
| 54-158 | 0.054 | 0.158 | 0.266 |
| 59-158 | 0.059 | 0.158 | 0.276 |
| 79-157SS | 0.079 | 0.158 | 0.316 |
| 50-158VS | 0.050 | 0.159 | 0.259 |
| 12-158SS | 0.012 | 0.160 | 0.184 |
| 87-158SS | 0.089 | 0.161 | 0.339 |
| 32-160VS | 0.032 | 0.162 | 0.226 |
| 40-162 | 0.040 | 0.162 | 0.242 |
| 70-161ES | 0.070 | 0.162 | 0.302 |
| 75-165 | 0.075 | 0.165 | 0.315 |
| 178-165 | 0.178 | 0.165 | 0.521 |
| 21-165VS | 0.021 | 0.166 | 0.208 |
| 60-166 | 0.060 | 0.166 | 0.286 |
| 93-166 | 0.093 | 0.166 | 0.352 |
| 24-169 | 0.024 | 0.169 | 0.217 |
| 70-170NS | 0.070 | 0.169 | 0.309 |
| 20-170 | 0.020 | 0.170 | 0.210 |
| 45-165SS | 0.046 | 0.170 | 0.262 |
| 48-170 | 0.048 | 0.170 | 0.266 |
| 16-171 | 0.016 | 0.171 | 0.203 |
| 20-170VS | 0.020 | 0.172 | 0.212 |
| 37-172 | 0.037 | 0.172 | 0.246 |
| 16-175 | 0.016 | 0.175 | 0.207 |
| 30-176 | 0.030 | 0.176 | 0.236 |
| 40-176 | 0.040 | 0.176 | 0.256 |
| 50-176 | 0.050 | 0.176 | 0.276 |
| 56-176 | 0.056 | 0.176 | 0.288 |
| 68-176 | 0.068 | 0.176 | 0.312 |
| 104-176 | 0.104 | 0.176 | 0.384 |
| 71-178 | 0.071 | 0.178 | 0.320 |
| 40-180 | 0.040 | 0.180 | 0.260 |
| 73-182 | 0.073 | 0.182 | 0.328 |
| 28-181VS | 0.028 | 0.183 | 0.239 |
| 35-182VS | 0.035 | 0.184 | 0.254 |
| 48-185 | 0.048 | 0.185 | 0.281 |
| 40-184SS | 0.040 | 0.186 | 0.266 |
| 31-187 | 0.031 | 0.187 | 0.249 |
| 50-187 | 0.050 | 0.187 | 0.287 |
| 70-187 | 0.070 | 0.187 | 0.327 |
| 139-187 | 0.139 | 0.187 | 0.465 |
| 35-182VS | 0.035 | 0.188 | 0.258 |
| 62-188 | 0.062 | 0.188 | 0.312 |

Precision Associates, Inc.
3800 N. Washington Ave.
Minneapolis, MN 55412

Phone: 612-333-7464
Fax: 612-342-2417
Toll: 800-394-6590

www.PrecisionAssoc.com



O-Rings Special Size



| Mold IDen | C/S | ID | OD (Ref) |
|-----------|-------|-------|----------|
| 35-188VS | 0.035 | 0.190 | 0.260 |
| 35-190 | 0.035 | 0.190 | 0.260 |
| 23-191 | 0.023 | 0.191 | 0.237 |
| 39-189SS | 0.039 | 0.191 | 0.269 |
| 55-195 | 0.055 | 0.195 | 0.305 |
| 63-193VS | 0.064 | 0.195 | 0.323 |
| 70-195 | 0.070 | 0.195 | 0.335 |
| 25-190SS | 0.025 | 0.196 | 0.246 |
| 98-197 | 0.098 | 0.197 | 0.393 |
| 118-197 | 0.118 | 0.197 | 0.433 |
| 39-197ES | 0.039 | 0.198 | 0.276 |
| 30-199ES | 0.030 | 0.199 | 0.259 |
| 40-200 | 0.040 | 0.200 | 0.280 |
| 51-199ES | 0.051 | 0.200 | 0.302 |
| 122-200 | 0.122 | 0.200 | 0.444 |
| 28-201 | 0.028 | 0.201 | 0.257 |
| 23-200 | 0.023 | 0.202 | 0.248 |
| 70-202 | 0.070 | 0.202 | 0.342 |
| 59-200VS | 0.060 | 0.203 | 0.323 |
| 24-205 | 0.024 | 0.205 | 0.253 |
| 30-208 | 0.030 | 0.208 | 0.268 |
| 39-208 | 0.039 | 0.208 | 0.286 |
| 50-208 | 0.050 | 0.208 | 0.308 |
| 54-210NS | 0.053 | 0.209 | 0.315 |
| 33-210 | 0.033 | 0.210 | 0.276 |
| 40-210 | 0.040 | 0.210 | 0.290 |
| 45-209ES | 0.045 | 0.210 | 0.300 |
| 71-210 | 0.071 | 0.210 | 0.352 |
| 80-208VS | 0.081 | 0.210 | 0.372 |
| 90-208VS | 0.091 | 0.210 | 0.392 |
| 71-211ES | 0.071 | 0.212 | 0.354 |
| 28-210SS | 0.028 | 0.213 | 0.269 |
| 30-212SS | 0.030 | 0.214 | 0.274 |
| 33-210SS | 0.034 | 0.214 | 0.282 |
| 60-215 | 0.060 | 0.215 | 0.335 |
| 18-214VS | 0.018 | 0.216 | 0.252 |
| 41-216 | 0.041 | 0.216 | 0.298 |
| 53-216 | 0.053 | 0.216 | 0.322 |
| 25-218 | 0.025 | 0.218 | 0.268 |
| 94-218NS | 0.094 | 0.218 | 0.406 |
| 156-218 | 0.156 | 0.218 | 0.530 |
| 188-218 | 0.188 | 0.218 | 0.594 |
| 47-217VS | 0.047 | 0.219 | 0.313 |
| 60-217ES | 0.061 | 0.219 | 0.341 |
| 70-219 | 0.070 | 0.219 | 0.359 |

| Mold IDen | C/S | ID | OD (Ref) |
|-----------|-------|-------|----------|
| 125-219 | 0.125 | 0.219 | 0.469 |
| 32-220 | 0.032 | 0.220 | 0.284 |
| 37-220 | 0.037 | 0.220 | 0.294 |
| 46-224 | 0.046 | 0.224 | 0.316 |
| 74-224 | 0.074 | 0.224 | 0.372 |
| 79-224 | 0.079 | 0.224 | 0.382 |
| 40-228 | 0.040 | 0.228 | 0.308 |
| 12-227VS | 0.012 | 0.229 | 0.253 |
| 52-229 | 0.052 | 0.229 | 0.333 |
| 140-230ES | 0.141 | 0.231 | 0.513 |
| 40-228SS | 0.041 | 0.232 | 0.314 |
| 62-230SS | 0.063 | 0.232 | 0.358 |
| 51-232SS | 0.052 | 0.234 | 0.338 |
| 34-232SS | 0.034 | 0.235 | 0.303 |
| 195-235 | 0.195 | 0.235 | 0.625 |
| 78-236 | 0.078 | 0.236 | 0.392 |
| 25-237 | 0.025 | 0.237 | 0.287 |
| 59-236VS | 0.059 | 0.238 | 0.356 |
| 31-238 | 0.031 | 0.238 | 0.300 |
| 40-238 | 0.040 | 0.238 | 0.318 |
| 40-239 | 0.040 | 0.239 | 0.319 |
| 42-239 | 0.042 | 0.239 | 0.323 |
| 48-239 | 0.048 | 0.239 | 0.335 |
| 51-239 | 0.051 | 0.239 | 0.341 |
| 174-239 | 0.174 | 0.239 | 0.587 |
| 63-240 | 0.063 | 0.240 | 0.366 |
| 70-240 | 0.070 | 0.240 | 0.380 |
| 77-240 | 0.077 | 0.240 | 0.394 |
| 30-239VS | 0.030 | 0.241 | 0.301 |
| 73-239SS | 0.074 | 0.241 | 0.389 |
| 164-242 | 0.164 | 0.242 | 0.570 |
| 56-239VS | 0.057 | 0.243 | 0.357 |
| 71-243 | 0.071 | 0.243 | 0.385 |
| 74-244 | 0.074 | 0.244 | 0.392 |
| 45-245 | 0.045 | 0.245 | 0.335 |
| 60-246 | 0.060 | 0.246 | 0.366 |
| 68-246 | 0.068 | 0.246 | 0.382 |
| 125-247 | 0.125 | 0.247 | 0.497 |
| 20-248 | 0.020 | 0.248 | 0.288 |
| 48-248 | 0.048 | 0.248 | 0.344 |
| 71-248 | 0.071 | 0.248 | 0.390 |
| 51-249 | 0.051 | 0.249 | 0.351 |
| 32-250 | 0.032 | 0.250 | 0.314 |
| 35-250 | 0.035 | 0.250 | 0.320 |
| 80-250 | 0.080 | 0.250 | 0.410 |

Precision Associates, Inc.

3800 N. Washington Ave.
Minneapolis, MN 55412

18

Phone: 612-333-7464

Fax: 612-342-2417

Toll: 800-394-6590

www.PrecisionAssoc.com



O-Rings Special Size



| Mold IDen | C/S | ID | OD (Ref) |
|-----------|-------|-------|----------|
| 93-250 | 0.093 | 0.250 | 0.436 |
| 94-248VS | 0.095 | 0.251 | 0.441 |
| 62-250VS | 0.063 | 0.252 | 0.378 |
| 40-248SS | 0.041 | 0.253 | 0.335 |
| 77-250SS | 0.078 | 0.255 | 0.411 |
| 14-256 | 0.014 | 0.256 | 0.284 |
| 34-256 | 0.034 | 0.256 | 0.324 |
| 46-257 | 0.046 | 0.257 | 0.349 |
| 40-258 | 0.040 | 0.258 | 0.338 |
| 59-256VS | 0.060 | 0.259 | 0.379 |
| 71-256VS | 0.072 | 0.259 | 0.403 |
| 89-255SS | 0.090 | 0.259 | 0.439 |
| 21-260 | 0.021 | 0.260 | 0.302 |
| 70-258SS | 0.071 | 0.262 | 0.404 |
| 110-265NS | 0.110 | 0.264 | 0.484 |
| 60-265 | 0.060 | 0.265 | 0.385 |
| 75-262SS | 0.076 | 0.266 | 0.418 |
| 32-264VS | 0.032 | 0.267 | 0.331 |
| 53-270 | 0.053 | 0.270 | 0.376 |
| 70-270 | 0.070 | 0.270 | 0.410 |
| 75-268SS | 0.076 | 0.271 | 0.423 |
| 5-275ES | 0.005 | 0.275 | 0.285 |
| 6-275ES | 0.006 | 0.275 | 0.287 |
| 7-275ES | 0.007 | 0.275 | 0.289 |
| 30-272SS | 0.030 | 0.275 | 0.335 |
| 70-275 | 0.070 | 0.275 | 0.415 |
| 70-270SS | 0.071 | 0.275 | 0.417 |
| 104-272VS | 0.105 | 0.275 | 0.485 |
| 197-276 | 0.197 | 0.276 | 0.670 |
| 36-272SS | 0.037 | 0.277 | 0.351 |
| 44-277 | 0.044 | 0.277 | 0.365 |
| 44-278 | 0.044 | 0.277 | 0.365 |
| 76-277 | 0.076 | 0.277 | 0.429 |
| 53-276ES | 0.053 | 0.278 | 0.384 |
| 40-275SS | 0.041 | 0.279 | 0.361 |
| 59-279 | 0.059 | 0.279 | 0.397 |
| 190-280 | 0.190 | 0.280 | 0.660 |
| 140-281 | 0.140 | 0.281 | 0.561 |
| 46-278VS | 0.047 | 0.283 | 0.377 |
| 25-285 | 0.025 | 0.285 | 0.335 |
| 63-281SS | 0.063 | 0.285 | 0.411 |
| 35-283SS | 0.035 | 0.286 | 0.356 |
| 24-285VS | 0.024 | 0.287 | 0.333 |
| 50-287 | 0.050 | 0.287 | 0.387 |
| 45-290 | 0.045 | 0.290 | 0.380 |

| Mold IDen | C/S | ID | OD (Ref) |
|-----------|-------|-------|----------|
| 55-287VS | 0.056 | 0.290 | 0.402 |
| 70-285SS | 0.071 | 0.290 | 0.432 |
| 86-290 | 0.086 | 0.290 | 0.462 |
| 70-291 | 0.070 | 0.291 | 0.431 |
| 94-287VS | 0.095 | 0.291 | 0.481 |
| 39-295 | 0.039 | 0.295 | 0.373 |
| 59-295 | 0.059 | 0.295 | 0.413 |
| 49-295ES | 0.049 | 0.297 | 0.395 |
| 32-295VS | 0.032 | 0.297 | 0.362 |
| 78-298 | 0.078 | 0.298 | 0.454 |
| 110-299 | 0.110 | 0.299 | 0.519 |
| 50-300 | 0.050 | 0.300 | 0.400 |
| 25-301 | 0.025 | 0.301 | 0.351 |
| 38-301 | 0.038 | 0.301 | 0.377 |
| 42-301 | 0.042 | 0.301 | 0.385 |
| 60-301 | 0.060 | 0.301 | 0.421 |
| 35-301VS | 0.035 | 0.304 | 0.374 |
| 35-301VS | 0.035 | 0.304 | 0.374 |
| 54-301VS | 0.055 | 0.304 | 0.414 |
| 71-304 | 0.071 | 0.304 | 0.446 |
| 20-305 | 0.020 | 0.305 | 0.345 |
| 108-305 | 0.108 | 0.305 | 0.521 |
| 34-306 | 0.034 | 0.306 | 0.374 |
| 52-306 | 0.052 | 0.306 | 0.410 |
| 46-307 | 0.046 | 0.307 | 0.399 |
| 35-307ES | 0.035 | 0.308 | 0.378 |
| 72-309 | 0.072 | 0.309 | 0.453 |
| 150-310 | 0.150 | 0.310 | 0.610 |
| 31-312 | 0.031 | 0.312 | 0.374 |
| 40-310VS | 0.040 | 0.312 | 0.392 |
| 78-312 | 0.078 | 0.312 | 0.468 |
| 97-312 | 0.097 | 0.312 | 0.506 |
| 103-312 | 0.103 | 0.312 | 0.518 |
| 135-312 | 0.135 | 0.312 | 0.582 |
| 51-313 | 0.051 | 0.313 | 0.415 |
| 59-311SS | 0.060 | 0.314 | 0.434 |
| 36-312SS | 0.036 | 0.315 | 0.387 |
| 43-315 | 0.043 | 0.315 | 0.401 |
| 70-313ES | 0.070 | 0.315 | 0.455 |
| 51-313VS | 0.052 | 0.316 | 0.420 |
| 45-315ES | 0.045 | 0.317 | 0.407 |
| 70-313VS | 0.071 | 0.317 | 0.459 |
| 74-317 | 0.074 | 0.317 | 0.465 |
| 63-319 | 0.063 | 0.319 | 0.445 |
| 39-317VS | 0.039 | 0.320 | 0.398 |

Precision Associates, Inc.
3800 N. Washington Ave.
Minneapolis, MN 55412

Phone: 612-333-7464
Fax: 612-342-2417
Toll: 800-394-6590

www.PrecisionAssoc.com



O-Rings Special Size



| Mold IDen | C/S | ID | OD (Ref) |
|-----------|-------|-------|----------|
| 70-320 | 0.070 | 0.320 | 0.460 |
| 35-322 | 0.035 | 0.322 | 0.392 |
| 63-319VS | 0.064 | 0.322 | 0.450 |
| 28-320VS | 0.028 | 0.323 | 0.379 |
| 35-318VS | 0.036 | 0.323 | 0.395 |
| 95-320SS | 0.097 | 0.326 | 0.520 |
| 103-326 | 0.103 | 0.326 | 0.532 |
| 125-327 | 0.125 | 0.326 | 0.576 |
| 39-327 | 0.039 | 0.327 | 0.405 |
| 90-324VS | 0.091 | 0.328 | 0.510 |
| 50-330 | 0.050 | 0.330 | 0.430 |
| 31-332 | 0.031 | 0.332 | 0.394 |
| 70-334 | 0.070 | 0.334 | 0.474 |
| 42-335 | 0.042 | 0.335 | 0.419 |
| 86-336 | 0.086 | 0.336 | 0.508 |
| 60-340 | 0.060 | 0.340 | 0.460 |
| 285-340 | 0.285 | 0.340 | 0.910 |
| 79-335SS | 0.081 | 0.341 | 0.503 |
| 45-346 | 0.045 | 0.346 | 0.436 |
| 125-348 | 0.125 | 0.348 | 0.598 |
| 70-344SS | 0.071 | 0.349 | 0.491 |
| 28-347VS | 0.028 | 0.350 | 0.406 |
| 74-350 | 0.074 | 0.350 | 0.498 |
| 28-346VS | 0.028 | 0.351 | 0.407 |
| 54-344SS | 0.055 | 0.351 | 0.461 |
| 47-350VS | 0.047 | 0.352 | 0.446 |
| 118-352 | 0.118 | 0.352 | 0.588 |
| 125-343SS | 0.126 | 0.352 | 0.604 |
| 39-354 | 0.039 | 0.354 | 0.432 |
| 108-352VS | 0.109 | 0.355 | 0.573 |
| 20-354VS | 0.020 | 0.357 | 0.397 |
| 73-357 | 0.073 | 0.357 | 0.503 |
| 56-355VS | 0.057 | 0.358 | 0.472 |
| 156-359 | 0.156 | 0.359 | 0.671 |
| 59-354SS | 0.060 | 0.360 | 0.480 |
| 35-361 | 0.035 | 0.361 | 0.431 |
| 79-354SS | 0.081 | 0.361 | 0.523 |
| 35-362 | 0.035 | 0.362 | 0.432 |
| 210-362 | 0.210 | 0.362 | 0.782 |
| 45-364 | 0.045 | 0.364 | 0.454 |
| 80-364 | 0.080 | 0.364 | 0.524 |
| 62-358SS | 0.063 | 0.365 | 0.491 |
| 72-364VS | 0.072 | 0.365 | 0.509 |
| 24-362VS | 0.024 | 0.366 | 0.414 |
| 25-356SS | 0.026 | 0.366 | 0.418 |

| Mold IDen | C/S | ID | OD (Ref) |
|-----------|-------|-------|----------|
| 87-366 | 0.087 | 0.366 | 0.540 |
| 104-366 | 0.104 | 0.366 | 0.574 |
| 52-364SS | 0.052 | 0.367 | 0.471 |
| 68-364SS | 0.069 | 0.367 | 0.505 |
| 71-367 | 0.071 | 0.367 | 0.509 |
| 74-362VS | 0.075 | 0.367 | 0.517 |
| 50-366SS | 0.050 | 0.369 | 0.469 |
| 80-364VS | 0.081 | 0.369 | 0.531 |
| 94-366SS | 0.095 | 0.369 | 0.559 |
| 40-370 | 0.040 | 0.370 | 0.450 |
| 60-364SS | 0.061 | 0.370 | 0.492 |
| 8-372 | 0.008 | 0.372 | 0.388 |
| 30-368VS | 0.030 | 0.373 | 0.433 |
| 70-373ES | 0.070 | 0.374 | 0.514 |
| 119-374 | 0.119 | 0.374 | 0.612 |
| 46-375 | 0.046 | 0.375 | 0.467 |
| 62-375 | 0.062 | 0.375 | 0.499 |
| 79-370SS | 0.080 | 0.375 | 0.535 |
| 93-375 | 0.093 | 0.375 | 0.561 |
| 106-375 | 0.106 | 0.375 | 0.587 |
| 125-375 | 0.125 | 0.375 | 0.625 |
| 180-375 | 0.180 | 0.375 | 0.735 |
| 38-377 | 0.038 | 0.377 | 0.453 |
| 103-374VS | 0.104 | 0.378 | 0.586 |
| 74-375VS | 0.075 | 0.379 | 0.529 |
| 30-380 | 0.030 | 0.380 | 0.440 |
| 91-380 | 0.091 | 0.380 | 0.562 |
| 31-378VS | 0.031 | 0.382 | 0.444 |
| 76-382 | 0.076 | 0.382 | 0.534 |
| 39-386 | 0.039 | 0.386 | 0.464 |
| 37-384VS | 0.037 | 0.387 | 0.461 |
| 74-382SS | 0.075 | 0.388 | 0.538 |
| 142-390NS | 0.142 | 0.389 | 0.673 |
| 50-386SS | 0.051 | 0.390 | 0.492 |
| 75-386VS | 0.076 | 0.390 | 0.542 |
| 103-391 | 0.103 | 0.391 | 0.597 |
| 54-394 | 0.054 | 0.394 | 0.502 |
| 139-390 | 0.140 | 0.394 | 0.674 |
| 40-395 | 0.040 | 0.395 | 0.475 |
| 43-393ES | 0.043 | 0.395 | 0.481 |
| 70-395 | 0.070 | 0.395 | 0.535 |
| 69-392VS | 0.070 | 0.395 | 0.535 |
| 43-395ES | 0.043 | 0.397 | 0.483 |
| 62-400 | 0.062 | 0.400 | 0.524 |
| 80-400 | 0.080 | 0.400 | 0.560 |



O-Rings Special Size



| Mold IDen | C/S | ID | OD (Ref) |
|-----------|-------|-------|----------|
| 92-400 | 0.092 | 0.400 | 0.584 |
| 50-397SS | 0.050 | 0.401 | 0.501 |
| 45-405 | 0.045 | 0.405 | 0.495 |
| 74-401VS | 0.075 | 0.405 | 0.555 |
| 80-406 | 0.080 | 0.406 | 0.566 |
| 174-406 | 0.174 | 0.406 | 0.754 |
| 39-408 | 0.039 | 0.408 | 0.486 |
| 90-401SS | 0.092 | 0.409 | 0.593 |
| 31-410 | 0.031 | 0.410 | 0.472 |
| 31-409SS | 0.031 | 0.413 | 0.475 |
| 32-409SS | 0.032 | 0.413 | 0.477 |
| 59-416ES | 0.059 | 0.417 | 0.535 |
| 139-417 | 0.139 | 0.417 | 0.695 |
| 184-417 | 0.184 | 0.417 | 0.785 |
| 56-414SS | 0.057 | 0.418 | 0.532 |
| 95-418 | 0.095 | 0.418 | 0.608 |
| 104-417VS | 0.105 | 0.421 | 0.631 |
| 70-418SS | 0.071 | 0.425 | 0.567 |
| 103-425 | 0.103 | 0.425 | 0.631 |
| 130-425 | 0.130 | 0.425 | 0.685 |
| 35-426 | 0.035 | 0.426 | 0.496 |
| 40-426 | 0.040 | 0.426 | 0.506 |
| 45-426 | 0.045 | 0.426 | 0.516 |
| 50-426 | 0.050 | 0.426 | 0.526 |
| 45-425ES | 0.045 | 0.428 | 0.518 |
| 180-429 | 0.180 | 0.429 | 0.789 |
| 71-430 | 0.071 | 0.430 | 0.572 |
| 34-432 | 0.034 | 0.432 | 0.500 |
| 76-432 | 0.076 | 0.432 | 0.584 |
| 39-433 | 0.039 | 0.433 | 0.511 |
| 53-429SS | 0.053 | 0.433 | 0.539 |
| 59-433 | 0.059 | 0.433 | 0.551 |
| 31-435 | 0.031 | 0.435 | 0.497 |
| 20-433VS | 0.020 | 0.437 | 0.477 |
| 70-437 | 0.070 | 0.437 | 0.577 |
| 16-438 | 0.016 | 0.438 | 0.470 |
| 93-437ES | 0.093 | 0.438 | 0.624 |
| 110-438 | 0.110 | 0.438 | 0.658 |
| 40-440 | 0.040 | 0.440 | 0.520 |
| 360-440 | 0.360 | 0.440 | 1.160 |
| 68-438SS | 0.069 | 0.444 | 0.582 |
| 26-445 | 0.026 | 0.445 | 0.497 |
| 87-445 | 0.087 | 0.445 | 0.619 |
| 120-445 | 0.120 | 0.445 | 0.685 |
| 132-445 | 0.132 | 0.445 | 0.709 |

| Mold IDen | C/S | ID | OD (Ref) |
|-----------|-------|-------|----------|
| 84-446 | 0.084 | 0.446 | 0.614 |
| 52-447 | 0.052 | 0.447 | 0.551 |
| 40-445SS | 0.040 | 0.449 | 0.529 |
| 46-450 | 0.046 | 0.450 | 0.542 |
| 94-445VS | 0.095 | 0.451 | 0.641 |
| 80-443SS | 0.082 | 0.452 | 0.616 |
| 139-452 | 0.140 | 0.452 | 0.732 |
| 40-445RS | 0.041 | 0.453 | 0.535 |
| 46-453 | 0.046 | 0.453 | 0.545 |
| 118-453 | 0.118 | 0.453 | 0.689 |
| 148-453 | 0.148 | 0.453 | 0.749 |
| 42-451ES | 0.042 | 0.454 | 0.538 |
| 70-455 | 0.070 | 0.455 | 0.595 |
| 84-456 | 0.084 | 0.456 | 0.624 |
| 103-456 | 0.103 | 0.456 | 0.662 |
| 165-456 | 0.165 | 0.456 | 0.786 |
| 28-457 | 0.028 | 0.457 | 0.513 |
| 59-453VS | 0.060 | 0.457 | 0.577 |
| 53-458 | 0.053 | 0.458 | 0.564 |
| 40-459 | 0.040 | 0.459 | 0.539 |
| 79-450SS | 0.081 | 0.459 | 0.621 |
| 60-460 | 0.060 | 0.460 | 0.580 |
| 70-460 | 0.070 | 0.460 | 0.600 |
| 28-457VS | 0.028 | 0.463 | 0.519 |
| 36-465 | 0.036 | 0.465 | 0.537 |
| 169-465 | 0.169 | 0.465 | 0.803 |
| 70-466 | 0.070 | 0.466 | 0.606 |
| 30-468 | 0.030 | 0.468 | 0.528 |
| 50-468 | 0.050 | 0.468 | 0.568 |
| 250-469 | 0.250 | 0.469 | 0.969 |
| 270-470 | 0.270 | 0.470 | 1.010 |
| 24-472 | 0.024 | 0.472 | 0.520 |
| 39-472 | 0.039 | 0.472 | 0.550 |
| 59-472 | 0.059 | 0.472 | 0.590 |
| 70-468SS | 0.071 | 0.472 | 0.614 |
| 160-472 | 0.160 | 0.472 | 0.792 |
| 103-469VS | 0.104 | 0.474 | 0.682 |
| 79-472VS | 0.079 | 0.476 | 0.634 |
| 113-477 | 0.113 | 0.477 | 0.703 |
| 151-477 | 0.151 | 0.477 | 0.779 |
| 77-468SS | 0.079 | 0.478 | 0.636 |
| 50-475SS | 0.050 | 0.480 | 0.580 |
| 106-480 | 0.106 | 0.480 | 0.692 |
| 172-480 | 0.172 | 0.480 | 0.824 |
| 70-478VS | 0.071 | 0.482 | 0.624 |

Precision Associates, Inc.
3800 N. Washington Ave.
Minneapolis, MN 55412

Phone: 612-333-7464
Fax: 612-342-2417
Toll: 800-394-6590

www.PrecisionAssoc.com



O-Rings Special Size



| Mold IDen | C/S | ID | OD (Ref) |
|-----------|-------|-------|----------|
| 40-484 | 0.040 | 0.484 | 0.564 |
| 121-485 | 0.121 | 0.485 | 0.727 |
| 104-482VS | 0.105 | 0.486 | 0.696 |
| 105-485PL | 0.106 | 0.487 | 0.699 |
| 110-487 | 0.110 | 0.487 | 0.707 |
| 55-489 | 0.055 | 0.489 | 0.599 |
| 41-490 | 0.041 | 0.490 | 0.572 |
| 70-487VS | 0.070 | 0.490 | 0.630 |
| 39-492 | 0.039 | 0.492 | 0.570 |
| 104-492 | 0.104 | 0.492 | 0.700 |
| 71-495 | 0.071 | 0.495 | 0.637 |
| 30-496 | 0.030 | 0.496 | 0.556 |
| 47-490SS | 0.048 | 0.496 | 0.592 |
| 26-492VS | 0.026 | 0.497 | 0.549 |
| 43-495TS | 0.043 | 0.497 | 0.583 |
| 75-489SS | 0.076 | 0.498 | 0.650 |
| 139-496VS | 0.140 | 0.498 | 0.778 |
| 93-500 | 0.093 | 0.500 | 0.686 |
| 125-500 | 0.125 | 0.500 | 0.750 |
| 234-500 | 0.234 | 0.500 | 0.968 |
| 243-500 | 0.243 | 0.500 | 0.986 |
| 70-495SS | 0.071 | 0.503 | 0.645 |
| 70-505 | 0.070 | 0.505 | 0.645 |
| 40-504ES | 0.040 | 0.506 | 0.586 |
| 40-508NS | 0.040 | 0.506 | 0.586 |
| 25-507 | 0.025 | 0.507 | 0.557 |
| 60-507 | 0.060 | 0.507 | 0.627 |
| 49-508 | 0.049 | 0.508 | 0.606 |
| 62-501SS | 0.063 | 0.508 | 0.634 |
| 70-489SS | 0.073 | 0.508 | 0.654 |
| 60-507ES | 0.060 | 0.511 | 0.631 |
| 98-512 | 0.098 | 0.512 | 0.708 |
| 20-515 | 0.020 | 0.515 | 0.555 |
| 100-514 | 0.100 | 0.515 | 0.715 |
| 139-515 | 0.140 | 0.515 | 0.795 |
| 35-512SS | 0.035 | 0.517 | 0.587 |
| 100-520 | 0.100 | 0.520 | 0.720 |
| 94-523 | 0.094 | 0.523 | 0.711 |
| 138-523 | 0.138 | 0.523 | 0.799 |
| 87-524 | 0.087 | 0.524 | 0.698 |
| 168-524 | 0.168 | 0.524 | 0.860 |
| 31-526 | 0.031 | 0.526 | 0.588 |
| 21-524VS | 0.021 | 0.528 | 0.570 |
| 70-518SS | 0.072 | 0.529 | 0.673 |
| 55-530 | 0.055 | 0.530 | 0.640 |

| Mold IDen | C/S | ID | OD (Ref) |
|-----------|-------|-------|----------|
| 98-520SS | 0.100 | 0.530 | 0.730 |
| 59-531 | 0.059 | 0.531 | 0.649 |
| 71-525SS | 0.072 | 0.533 | 0.677 |
| 39-535 | 0.039 | 0.535 | 0.613 |
| 51-531ES | 0.052 | 0.537 | 0.641 |
| 113-539 | 0.113 | 0.539 | 0.765 |
| 31-539SS | 0.031 | 0.544 | 0.606 |
| 51-547 | 0.051 | 0.547 | 0.649 |
| 40-550 | 0.040 | 0.550 | 0.630 |
| 112-549ES | 0.112 | 0.550 | 0.774 |
| 79-551 | 0.079 | 0.551 | 0.709 |
| 51-551VS | 0.051 | 0.555 | 0.657 |
| 32-551SS | 0.032 | 0.556 | 0.620 |
| 32-551VS | 0.032 | 0.557 | 0.621 |
| 39-550VS | 0.040 | 0.557 | 0.637 |
| 51-547VS | 0.052 | 0.557 | 0.661 |
| 71-557 | 0.071 | 0.557 | 0.699 |
| 104-557 | 0.104 | 0.557 | 0.765 |
| 80-551SS | 0.082 | 0.562 | 0.726 |
| 109-562 | 0.109 | 0.562 | 0.780 |
| 39-570 | 0.039 | 0.570 | 0.648 |
| 106-570 | 0.106 | 0.570 | 0.782 |
| 32-566VS | 0.032 | 0.571 | 0.635 |
| 60-575 | 0.060 | 0.575 | 0.695 |
| 139-576 | 0.139 | 0.576 | 0.854 |
| 30-577 | 0.030 | 0.577 | 0.637 |
| 218-578 | 0.218 | 0.578 | 1.014 |
| 345-580 | 0.345 | 0.580 | 1.270 |
| 415-580 | 0.415 | 0.580 | 1.410 |
| 70-583 | 0.070 | 0.583 | 0.723 |
| 70-575SS | 0.071 | 0.585 | 0.727 |
| 20-583ES | 0.020 | 0.587 | 0.627 |
| 40-583VS | 0.040 | 0.587 | 0.668 |
| 79-591NS | 0.079 | 0.589 | 0.747 |
| 50-590 | 0.050 | 0.590 | 0.690 |
| 92-590 | 0.092 | 0.590 | 0.774 |
| 103-590 | 0.103 | 0.590 | 0.796 |
| 98-591 | 0.098 | 0.591 | 0.787 |
| 20-595 | 0.020 | 0.595 | 0.635 |
| 171-595 | 0.171 | 0.595 | 0.937 |
| 70-590VS | 0.071 | 0.596 | 0.738 |
| 68-598 | 0.068 | 0.598 | 0.734 |
| 92-590SS | 0.094 | 0.601 | 0.789 |
| 95-590SS | 0.097 | 0.601 | 0.795 |
| 59-602 | 0.059 | 0.602 | 0.720 |

Precision Associates, Inc.

3800 N. Washington Ave.
Minneapolis, MN 55412

22

Phone: 612-333-7464

Fax: 612-342-2417

Toll: 800-394-6590

www.PrecisionAssoc.com



O-Rings Special Size



| Mold IDen | C/S | ID | OD (Ref) |
|-----------|-------|-------|----------|
| 87-602 | 0.087 | 0.602 | 0.776 |
| 63-594SS | 0.064 | 0.605 | 0.733 |
| 105-605 | 0.105 | 0.605 | 0.815 |
| 158-605 | 0.158 | 0.605 | 0.921 |
| 83-606 | 0.083 | 0.606 | 0.772 |
| 187-609 | 0.187 | 0.609 | 0.983 |
| 58-610 | 0.058 | 0.610 | 0.726 |
| 40-612 | 0.040 | 0.612 | 0.692 |
| 166-612 | 0.166 | 0.612 | 0.944 |
| 170-612 | 0.170 | 0.612 | 0.952 |
| 74-614 | 0.074 | 0.614 | 0.762 |
| 77-614 | 0.077 | 0.614 | 0.768 |
| 34-611ES | 0.034 | 0.617 | 0.685 |
| 47-618 | 0.047 | 0.618 | 0.712 |
| 95-618 | 0.095 | 0.618 | 0.808 |
| 104-618 | 0.104 | 0.618 | 0.826 |
| 71-620 | 0.071 | 0.620 | 0.762 |
| 30-622 | 0.030 | 0.622 | 0.682 |
| 103-612SS | 0.105 | 0.622 | 0.832 |
| 94-614SS | 0.096 | 0.624 | 0.816 |
| 50-625 | 0.050 | 0.625 | 0.725 |
| 125-625 | 0.125 | 0.625 | 0.875 |
| 39-630 | 0.039 | 0.630 | 0.708 |
| 30-622SS | 0.030 | 0.631 | 0.691 |
| 45-632 | 0.045 | 0.632 | 0.722 |
| 47-632 | 0.047 | 0.632 | 0.726 |
| 52-632 | 0.052 | 0.632 | 0.736 |
| 56-632 | 0.056 | 0.632 | 0.744 |
| 185-625SS | 0.187 | 0.632 | 1.006 |
| 39-636NS | 0.039 | 0.633 | 0.711 |
| 79-623SS | 0.080 | 0.634 | 0.794 |
| 32-630SS | 0.032 | 0.635 | 0.699 |
| 79-630SS | 0.080 | 0.637 | 0.797 |
| 62-638 | 0.062 | 0.638 | 0.762 |
| 190-638 | 0.190 | 0.638 | 1.018 |
| 249-635SS | 0.251 | 0.640 | 1.142 |
| 31-643 | 0.031 | 0.643 | 0.705 |
| 103-643 | 0.103 | 0.643 | 0.849 |
| 50-640ES | 0.050 | 0.644 | 0.744 |
| 87-644 | 0.087 | 0.644 | 0.818 |
| 92-635SS | 0.093 | 0.644 | 0.830 |
| 120-636SS | 0.122 | 0.645 | 0.889 |
| 43-642SS | 0.043 | 0.646 | 0.732 |
| 70-646 | 0.070 | 0.646 | 0.786 |
| 139-640 | 0.140 | 0.646 | 0.926 |

| Mold IDen | C/S | ID | OD (Ref) |
|-----------|-------|-------|----------|
| 93-634SS | 0.095 | 0.648 | 0.838 |
| 70-652 | 0.070 | 0.652 | 0.792 |
| 46-656 | 0.046 | 0.656 | 0.748 |
| 94-656 | 0.094 | 0.656 | 0.844 |
| 57-658 | 0.057 | 0.658 | 0.772 |
| 70-646SS | 0.071 | 0.658 | 0.800 |
| 40-660 | 0.040 | 0.660 | 0.740 |
| 64-660 | 0.064 | 0.660 | 0.788 |
| 59-669 | 0.059 | 0.669 | 0.787 |
| 79-669VS | 0.080 | 0.673 | 0.833 |
| 106-665VS | 0.107 | 0.674 | 0.888 |
| 113-674 | 0.113 | 0.674 | 0.900 |
| 86-675 | 0.086 | 0.675 | 0.847 |
| 140-675 | 0.140 | 0.675 | 0.955 |
| 56-670SS | 0.057 | 0.676 | 0.790 |
| 63-670SS | 0.064 | 0.676 | 0.804 |
| 70-675ES | 0.070 | 0.676 | 0.816 |
| 87-681 | 0.087 | 0.681 | 0.855 |
| 104-681 | 0.104 | 0.681 | 0.889 |
| 71-683 | 0.071 | 0.683 | 0.825 |
| 395-677SS | 0.400 | 0.685 | 1.485 |
| 275-687 | 0.275 | 0.687 | 1.237 |
| 159-688 | 0.159 | 0.688 | 1.006 |
| 20-685VS | 0.020 | 0.689 | 0.729 |
| 30-690 | 0.030 | 0.690 | 0.750 |
| 83-676SS | 0.085 | 0.690 | 0.860 |
| 46-691 | 0.046 | 0.691 | 0.783 |
| 57-690VS | 0.058 | 0.700 | 0.816 |
| 103-700 | 0.103 | 0.700 | 0.906 |
| 40-701 | 0.040 | 0.701 | 0.781 |
| 140-692SS | 0.142 | 0.701 | 0.985 |
| 91-702 | 0.091 | 0.702 | 0.884 |
| 70-688SS | 0.072 | 0.703 | 0.847 |
| 46-705 | 0.046 | 0.705 | 0.797 |
| 87-705 | 0.087 | 0.705 | 0.879 |
| 70-706 | 0.070 | 0.706 | 0.846 |
| 138-708 | 0.138 | 0.708 | 0.984 |
| 59-709 | 0.059 | 0.709 | 0.827 |
| 118-709 | 0.118 | 0.709 | 0.945 |
| 75-710 | 0.075 | 0.710 | 0.860 |
| 50-720 | 0.050 | 0.720 | 0.820 |
| 70-720 | 0.070 | 0.720 | 0.860 |
| 157-715VS | 0.159 | 0.722 | 1.040 |
| 70-724 | 0.070 | 0.724 | 0.864 |
| 40-725 | 0.040 | 0.725 | 0.805 |

Precision Associates, Inc.
3800 N. Washington Ave.
Minneapolis, MN 55412

Phone: 612-333-7464
Fax: 612-342-2417
Toll: 800-394-6590

www.PrecisionAssoc.com



O-Rings Special Size



| Mold IDen | C/S | ID | OD (Ref) |
|-----------|-------|-------|----------|
| 36-732 | 0.036 | 0.730 | 0.802 |
| 50-720SS | 0.051 | 0.730 | 0.832 |
| 158-730 | 0.158 | 0.730 | 1.046 |
| 103-734PL | 0.103 | 0.734 | 0.940 |
| 73-735 | 0.073 | 0.735 | 0.881 |
| 118-728SS | 0.119 | 0.735 | 0.973 |
| 140-741 | 0.140 | 0.741 | 1.021 |
| 70-742 | 0.070 | 0.742 | 0.882 |
| 104-745 | 0.104 | 0.745 | 0.953 |
| 71-746 | 0.071 | 0.746 | 0.888 |
| 70-739VS | 0.071 | 0.748 | 0.890 |
| 40-750 | 0.040 | 0.750 | 0.830 |
| 62-750 | 0.062 | 0.750 | 0.874 |
| 82-750 | 0.082 | 0.750 | 0.914 |
| 250-750 | 0.250 | 0.750 | 1.250 |
| 281-750 | 0.281 | 0.750 | 1.312 |
| 118-748VS | 0.119 | 0.755 | 0.993 |
| 70-739SS | 0.072 | 0.760 | 0.904 |
| 87-760 | 0.087 | 0.760 | 0.934 |
| 100-760 | 0.100 | 0.760 | 0.960 |
| 98-765 | 0.098 | 0.765 | 0.961 |
| 139-765 | 0.139 | 0.765 | 1.043 |
| 178-767 | 0.178 | 0.767 | 1.123 |
| 103-768 | 0.103 | 0.768 | 0.974 |
| 70-769 | 0.070 | 0.769 | 0.909 |
| 80-758SS | 0.081 | 0.769 | 0.931 |
| 91-760SS | 0.093 | 0.773 | 0.959 |
| 31-779 | 0.031 | 0.779 | 0.841 |
| 40-785 | 0.040 | 0.785 | 0.865 |
| 47-780SS | 0.047 | 0.788 | 0.882 |
| 47-780SS | 0.048 | 0.788 | 0.884 |
| 98-787ES | 0.098 | 0.789 | 0.985 |
| 155-790 | 0.155 | 0.790 | 1.100 |
| 45-787VS | 0.045 | 0.794 | 0.884 |
| 63-787VS | 0.064 | 0.794 | 0.922 |
| 104-787VS | 0.105 | 0.794 | 1.004 |
| 118-787VS | 0.119 | 0.794 | 1.032 |
| 80-796 | 0.080 | 0.796 | 0.956 |
| 49-782SS | 0.050 | 0.797 | 0.897 |
| 176-787SS | 0.179 | 0.799 | 1.157 |
| 210-799 | 0.210 | 0.799 | 1.219 |
| 140-800 | 0.140 | 0.800 | 1.080 |
| 63-799VS | 0.064 | 0.807 | 0.935 |
| 104-809 | 0.104 | 0.809 | 1.017 |
| 71-810 | 0.071 | 0.810 | 0.952 |

| Mold IDen | C/S | ID | OD (Ref) |
|-----------|-------|-------|----------|
| 118-795SS | 0.120 | 0.810 | 1.050 |
| 30-810ES | 0.030 | 0.812 | 0.872 |
| 63-813 | 0.063 | 0.813 | 0.939 |
| 156-800SS | 0.159 | 0.813 | 1.131 |
| 103-814 | 0.103 | 0.814 | 1.020 |
| 223-813SS | 0.224 | 0.815 | 1.263 |
| 87-817 | 0.087 | 0.817 | 0.991 |
| 40-820 | 0.040 | 0.820 | 0.900 |
| 40-825 | 0.040 | 0.825 | 0.905 |
| 150-825 | 0.150 | 0.825 | 1.125 |
| 125-827 | 0.125 | 0.827 | 1.077 |
| 30-840 | 0.030 | 0.840 | 0.900 |
| 185-840 | 0.185 | 0.840 | 1.210 |
| 59-836SS | 0.059 | 0.841 | 0.959 |
| 156-837ES | 0.157 | 0.842 | 1.156 |
| 104-835VS | 0.105 | 0.843 | 1.053 |
| 156-844 | 0.156 | 0.844 | 1.156 |
| 406-844 | 0.406 | 0.844 | 1.656 |
| 103-850 | 0.103 | 0.848 | 1.054 |
| 45-850 | 0.045 | 0.850 | 0.940 |
| 59-850 | 0.059 | 0.850 | 0.968 |
| 70-831SS | 0.072 | 0.850 | 0.994 |
| 68-843SS | 0.069 | 0.856 | 0.994 |
| 150-850VS | 0.151 | 0.856 | 1.158 |
| 45-850VS | 0.045 | 0.857 | 0.947 |
| 70-850VS | 0.071 | 0.858 | 1.000 |
| 158-855SS | 0.159 | 0.858 | 1.176 |
| 135-859 | 0.135 | 0.859 | 1.129 |
| 275-859 | 0.275 | 0.859 | 1.409 |
| 32-860 | 0.032 | 0.860 | 0.924 |
| 80-850SS | 0.081 | 0.860 | 1.022 |
| 52-864 | 0.052 | 0.864 | 0.968 |
| 59-866 | 0.059 | 0.866 | 0.984 |
| 70-843SSS | 0.072 | 0.866 | 1.010 |
| 70-868 | 0.070 | 0.868 | 1.008 |
| 197-866 | 0.198 | 0.869 | 1.265 |
| 79-866ES | 0.079 | 0.870 | 1.028 |
| 104-870 | 0.104 | 0.870 | 1.078 |
| 90-854SS | 0.092 | 0.872 | 1.056 |
| 118-866SS | 0.119 | 0.873 | 1.111 |
| 50-875 | 0.050 | 0.875 | 0.975 |
| 203-875 | 0.203 | 0.875 | 1.281 |
| 312-875 | 0.312 | 0.875 | 1.499 |
| 71-876 | 0.071 | 0.876 | 1.018 |
| 40-879 | 0.040 | 0.879 | 0.959 |

Precision Associates, Inc.

3800 N. Washington Ave.
Minneapolis, MN 55412

24

Phone: 612-333-7464

Fax: 612-342-2417

Toll: 800-394-6590

www.PrecisionAssoc.com



O-Rings Special Size



| Mold IDen | C/S | ID | OD (Ref) |
|-----------|-------|-------|----------|
| 70-879ES | 0.070 | 0.882 | 1.022 |
| 150-886 | 0.150 | 0.886 | 1.186 |
| 190-870SS | 0.194 | 0.887 | 1.275 |
| 130-888 | 0.130 | 0.888 | 1.148 |
| 156-875SS | 0.159 | 0.889 | 1.207 |
| 80-880SS | 0.081 | 0.893 | 1.055 |
| 70-879SS | 0.071 | 0.896 | 1.038 |
| 31-898 | 0.031 | 0.898 | 0.960 |
| 125-900 | 0.125 | 0.900 | 1.150 |
| 47-894SS | 0.048 | 0.903 | 0.999 |
| 59-905 | 0.059 | 0.905 | 1.023 |
| 141-905 | 0.141 | 0.905 | 1.187 |
| 83-906 | 0.083 | 0.906 | 1.072 |
| 52-910 | 0.052 | 0.910 | 1.014 |
| 31-915 | 0.031 | 0.915 | 0.977 |
| 54-908SS | 0.055 | 0.917 | 1.027 |
| 123-924 | 0.123 | 0.924 | 1.170 |
| 81-925 | 0.081 | 0.925 | 1.087 |
| 72-926 | 0.072 | 0.926 | 1.070 |
| 40-929 | 0.040 | 0.929 | 1.009 |
| 114-929 | 0.114 | 0.929 | 1.157 |
| 40-930 | 0.040 | 0.930 | 1.010 |
| 88-910SS | 0.090 | 0.931 | 1.111 |
| 104-933 | 0.104 | 0.933 | 1.141 |
| 71-935 | 0.071 | 0.935 | 1.077 |
| 321-937 | 0.321 | 0.937 | 1.579 |
| 141-938 | 0.141 | 0.938 | 1.220 |
| 195-938 | 0.195 | 0.938 | 1.328 |
| 103-940 | 0.103 | 0.940 | 1.146 |
| 39-945NS | 0.039 | 0.942 | 1.020 |
| 70-943 | 0.070 | 0.943 | 1.083 |
| 24-945 | 0.024 | 0.945 | 0.993 |
| 79-945 | 0.079 | 0.945 | 1.103 |
| 275-945 | 0.275 | 0.945 | 1.495 |
| 40-950 | 0.040 | 0.950 | 1.030 |
| 45-945ES | 0.045 | 0.950 | 1.040 |
| 215-950 | 0.215 | 0.950 | 1.380 |
| 118-953 | 0.118 | 0.953 | 1.189 |
| 139-953 | 0.139 | 0.953 | 1.231 |
| 156-938SS | 0.158 | 0.953 | 1.269 |
| 59-945SS | 0.060 | 0.954 | 1.074 |
| 300-957 | 0.300 | 0.957 | 1.557 |
| 35-950SS | 0.035 | 0.959 | 1.029 |
| 125-950SS | 0.126 | 0.960 | 1.212 |
| 63-962 | 0.063 | 0.962 | 1.088 |

| Mold IDen | C/S | ID | OD (Ref) |
|-------------|-------|-------|----------|
| 55-690VS | 0.055 | 0.965 | 1.075 |
| 176-975 | 0.176 | 0.975 | 1.327 |
| 235-975 | 0.235 | 0.975 | 1.445 |
| 46-967VS | 0.046 | 0.976 | 1.068 |
| 63-970ES | 0.064 | 0.979 | 1.107 |
| 50-970SS | 0.051 | 0.980 | 1.082 |
| 250-980 | 0.250 | 0.980 | 1.480 |
| 39-984NS | 0.039 | 0.981 | 1.059 |
| 50-984 | 0.050 | 0.984 | 1.084 |
| 79-984 | 0.079 | 0.984 | 1.142 |
| 100-984 | 0.100 | 0.984 | 1.184 |
| 140-988 | 0.140 | 0.988 | 1.268 |
| 197-984VS | 0.198 | 0.988 | 1.384 |
| 58-989 | 0.058 | 0.989 | 1.105 |
| 45-990 | 0.045 | 0.990 | 1.080 |
| 70-985SS | 0.071 | 0.992 | 1.134 |
| 30-980SS | 0.030 | 0.994 | 1.054 |
| 32-995 | 0.032 | 0.995 | 1.059 |
| 71-998 | 0.071 | 0.998 | 1.140 |
| 55-1.000 | 0.055 | 1.000 | 1.110 |
| 141-1.005 | 0.141 | 1.005 | 1.287 |
| 46-1.000SS | 0.046 | 1.007 | 1.099 |
| 80-1.000SS | 0.080 | 1.010 | 1.170 |
| 59-1.012 | 0.059 | 1.012 | 1.130 |
| 103-1.008ES | 0.104 | 1.014 | 1.222 |
| 39-1.010ES | 0.039 | 1.015 | 1.093 |
| 156-1.000SS | 0.159 | 1.016 | 1.334 |
| 70-1.015ES | 0.070 | 1.017 | 1.157 |
| 30-1.010VS | 0.030 | 1.019 | 1.079 |
| 174-1.020 | 0.174 | 1.020 | 1.368 |
| 65-1.030 | 0.065 | 1.030 | 1.160 |
| 47-1.024SS | 0.048 | 1.034 | 1.130 |
| 65-1.030ES | 0.065 | 1.035 | 1.165 |
| 32-1.039 | 0.032 | 1.039 | 1.103 |
| 40-1.040 | 0.040 | 1.040 | 1.120 |
| 93-1.040 | 0.093 | 1.040 | 1.226 |
| 53-1.037ES | 0.053 | 1.042 | 1.148 |
| 32-1.050 | 0.032 | 1.050 | 1.114 |
| 275-1.050 | 0.275 | 1.050 | 1.600 |
| 60-1.051 | 0.060 | 1.051 | 1.171 |
| 140-1.056 | 0.140 | 1.056 | 1.336 |
| 250-1.062NS | 0.249 | 1.056 | 1.554 |
| 213-1.057 | 0.213 | 1.057 | 1.483 |
| 104-1.059 | 0.104 | 1.059 | 1.267 |
| 71-1.061 | 0.071 | 1.061 | 1.203 |

Precision Associates, Inc.
3800 N. Washington Ave.
Minneapolis, MN 55412

Phone: 612-333-7464
Fax: 612-342-2417
Toll: 800-394-6590

www.PrecisionAssoc.com



O-Rings Special Size



| Mold IDen | C/S | ID | OD (Ref) |
|-------------|-------|-------|----------|
| 40-1.062 | 0.040 | 1.062 | 1.142 |
| 59-1.063 | 0.059 | 1.063 | 1.181 |
| 63-1.063 | 0.063 | 1.063 | 1.189 |
| 79-1.063 | 0.079 | 1.063 | 1.221 |
| 98-1.063 | 0.098 | 1.063 | 1.259 |
| 71-1.046SS | 0.072 | 1.065 | 1.209 |
| 93-1.065 | 0.093 | 1.065 | 1.251 |
| 212-1.060VS | 0.213 | 1.065 | 1.491 |
| 39-1.063VS | 0.039 | 1.069 | 1.147 |
| 62-1.069 | 0.062 | 1.069 | 1.193 |
| 31-1.071 | 0.031 | 1.071 | 1.133 |
| 176-1.077 | 0.176 | 1.077 | 1.429 |
| 26-1.080 | 0.026 | 1.080 | 1.132 |
| 72-1.081 | 0.072 | 1.081 | 1.225 |
| 37-1.080 | 0.037 | 1.082 | 1.156 |
| 40-1.086 | 0.040 | 1.086 | 1.166 |
| 90-1.091SS | 0.090 | 1.087 | 1.267 |
| 187-1.088 | 0.187 | 1.088 | 1.462 |
| 65-1.090 | 0.065 | 1.090 | 1.220 |
| 32-1.100 | 0.032 | 1.100 | 1.164 |
| 70-1.082SS | 0.071 | 1.100 | 1.242 |
| 176-1.100 | 0.176 | 1.100 | 1.452 |
| 275-1.100 | 0.275 | 1.100 | 1.650 |
| 43-1.101 | 0.043 | 1.101 | 1.187 |
| 78-1.102 | 0.078 | 1.102 | 1.258 |
| 157-1.102 | 0.157 | 1.102 | 1.416 |
| 229-1.099SS | 0.230 | 1.103 | 1.563 |
| 40-1.105 | 0.040 | 1.105 | 1.185 |
| 167-1.105 | 0.167 | 1.105 | 1.439 |
| 31-1.109 | 0.031 | 1.109 | 1.171 |
| 158-1.105SS | 0.159 | 1.109 | 1.427 |
| 25-1.110 | 0.025 | 1.110 | 1.160 |
| 43-1.101SS | 0.043 | 1.110 | 1.196 |
| 47-1.106ES | 0.047 | 1.111 | 1.205 |
| 212-1.111 | 0.212 | 1.111 | 1.535 |
| 81-1.114 | 0.081 | 1.114 | 1.276 |
| 275-1.100VS | 0.275 | 1.114 | 1.664 |
| 25-1.115 | 0.025 | 1.115 | 1.165 |
| 50-1.106SS | 0.051 | 1.117 | 1.219 |
| 140-1.119 | 0.140 | 1.119 | 1.399 |
| 36-1.118 | 0.036 | 1.120 | 1.192 |
| 374-1.102VS | 0.380 | 1.121 | 1.881 |
| 104-1.125 | 0.104 | 1.125 | 1.333 |
| 40-1.116VS | 0.040 | 1.126 | 1.206 |
| 118-1.121ES | 0.119 | 1.129 | 1.367 |

| Mold IDen | C/S | ID | OD (Ref) |
|-------------|-------|-------|----------|
| 49-1.130 | 0.049 | 1.130 | 1.228 |
| 70-1.114SS | 0.071 | 1.130 | 1.272 |
| 151-1.138 | 0.151 | 1.138 | 1.440 |
| 70-1.135ES | 0.070 | 1.141 | 1.281 |
| 149-1.136SS | 0.149 | 1.147 | 1.445 |
| 215-1.147 | 0.215 | 1.147 | 1.577 |
| 56-1.148 | 0.056 | 1.148 | 1.260 |
| 46-1.130SS | 0.047 | 1.149 | 1.243 |
| 45-1.153 | 0.045 | 1.153 | 1.243 |
| 54-1.153 | 0.054 | 1.153 | 1.261 |
| 176-1.156 | 0.176 | 1.156 | 1.508 |
| 193-1.158 | 0.193 | 1.158 | 1.544 |
| 65-1.140SS | 0.066 | 1.159 | 1.291 |
| 114-1.165 | 0.114 | 1.165 | 1.393 |
| 47-1.161ES | 0.047 | 1.167 | 1.261 |
| 69-1.157VS | 0.070 | 1.168 | 1.308 |
| 125-1.160ES | 0.126 | 1.168 | 1.420 |
| 60-1.173 | 0.060 | 1.173 | 1.293 |
| 62-1.176 | 0.062 | 1.176 | 1.300 |
| 140-1.176 | 0.140 | 1.176 | 1.456 |
| 149-1.180 | 0.149 | 1.180 | 1.478 |
| 28-1.181 | 0.028 | 1.181 | 1.237 |
| 104-1.186 | 0.104 | 1.186 | 1.394 |
| 210-1.187 | 0.210 | 1.187 | 1.607 |
| 71-1.188 | 0.071 | 1.188 | 1.330 |
| 76-1.188 | 0.076 | 1.188 | 1.340 |
| 94-1.188 | 0.094 | 1.188 | 1.376 |
| 39-1.189 | 0.039 | 1.189 | 1.267 |
| 30-1.190 | 0.030 | 1.190 | 1.250 |
| 157-1.181 | 0.158 | 1.191 | 1.507 |
| 52-1.176SS | 0.053 | 1.194 | 1.300 |
| 210-1.200 | 0.210 | 1.200 | 1.620 |
| 60-1.214NS | 0.060 | 1.205 | 1.325 |
| 60-1.203ES | 0.060 | 1.212 | 1.332 |
| 47-1.201SS | 0.048 | 1.213 | 1.309 |
| 149-1.213 | 0.149 | 1.213 | 1.511 |
| 60-1.190SS | 0.060 | 1.214 | 1.334 |
| 50-1.204SS | 0.051 | 1.216 | 1.318 |
| 40-1.220 | 0.040 | 1.220 | 1.300 |
| 157-1.220 | 0.157 | 1.220 | 1.534 |
| 300-1.220 | 0.300 | 1.220 | 1.820 |
| 70-1.220ES | 0.070 | 1.222 | 1.362 |
| 104-1.222 | 0.104 | 1.222 | 1.430 |
| 173-1.225 | 0.173 | 1.225 | 1.571 |
| 176-1.225 | 0.176 | 1.225 | 1.577 |

Precision Associates, Inc.

3800 N. Washington Ave.
Minneapolis, MN 55412

26

Phone: 612-333-7464

Fax: 612-342-2417

Toll: 800-394-6590

www.PrecisionAssoc.com



O-Rings Special Size



| Mold IDen | C/S | ID | OD (Ref) |
|-------------|-------|-------|----------|
| 275-1.225 | 0.275 | 1.225 | 1.775 |
| 31-1.226 | 0.031 | 1.226 | 1.288 |
| 141-1.226 | 0.141 | 1.226 | 1.508 |
| 197-1.230 | 0.197 | 1.230 | 1.624 |
| 31-1.226ES | 0.031 | 1.232 | 1.294 |
| 78-1.234 | 0.078 | 1.234 | 1.390 |
| 176-1.236 | 0.176 | 1.236 | 1.588 |
| 212-1.237 | 0.212 | 1.237 | 1.661 |
| 54-1.228SS | 0.055 | 1.240 | 1.350 |
| 250-1.240 | 0.250 | 1.240 | 1.740 |
| 52-1.245 | 0.052 | 1.245 | 1.349 |
| 140-1.246 | 0.140 | 1.246 | 1.526 |
| 104-1.249 | 0.104 | 1.249 | 1.457 |
| 50-1.250 | 0.050 | 1.250 | 1.350 |
| 71-1.251 | 0.071 | 1.251 | 1.393 |
| 70-1.240VS | 0.071 | 1.255 | 1.397 |
| 281-1.250NS | 0.282 | 1.256 | 1.820 |
| 47-1.245SS | 0.047 | 1.257 | 1.351 |
| 53-1.257 | 0.053 | 1.257 | 1.363 |
| 92-1.259 | 0.092 | 1.259 | 1.443 |
| 210-1.260 | 0.210 | 1.260 | 1.680 |
| 40-1.249VS | 0.040 | 1.261 | 1.341 |
| 50-1.257SS | 0.050 | 1.264 | 1.364 |
| 47-1.257VS | 0.047 | 1.266 | 1.360 |
| 70-1.240SS | 0.072 | 1.267 | 1.411 |
| 65-1.262ES | 0.065 | 1.268 | 1.398 |
| 30-1.272 | 0.030 | 1.272 | 1.332 |
| 60-1.274 | 0.060 | 1.274 | 1.394 |
| 120-1.280 | 0.120 | 1.280 | 1.520 |
| 139-1.265SS | 0.141 | 1.283 | 1.565 |
| 39-1.290 | 0.039 | 1.290 | 1.368 |
| 55-1.290 | 0.055 | 1.290 | 1.400 |
| 71-1.280VS | 0.072 | 1.293 | 1.437 |
| 70-1.281SS | 0.071 | 1.301 | 1.443 |
| 60-1.304 | 0.060 | 1.304 | 1.424 |
| 140-1.309 | 0.140 | 1.309 | 1.589 |
| 40-1.310 | 0.040 | 1.310 | 1.390 |
| 104-1.311 | 0.104 | 1.311 | 1.519 |
| 55-1.307ES | 0.055 | 1.313 | 1.423 |
| 71-1.314 | 0.071 | 1.314 | 1.456 |
| 50-1.325 | 0.050 | 1.325 | 1.425 |
| 93-1.320SS | 0.094 | 1.330 | 1.518 |
| 31-1.331 | 0.031 | 1.331 | 1.393 |
| 210-1.335 | 0.210 | 1.334 | 1.754 |
| 40-1.310SS | 0.041 | 1.335 | 1.417 |

| Mold IDen | C/S | ID | OD (Ref) |
|-------------|-------|-------|----------|
| 92-1.338 | 0.092 | 1.338 | 1.522 |
| 39-1.340 | 0.039 | 1.340 | 1.418 |
| 45-1.340 | 0.045 | 1.340 | 1.430 |
| 176-1.350 | 0.176 | 1.350 | 1.702 |
| 237-1.347SS | 0.238 | 1.352 | 1.828 |
| 215-1.364 | 0.215 | 1.364 | 1.794 |
| 140-1.365 | 0.140 | 1.365 | 1.645 |
| 80-1.370 | 0.080 | 1.370 | 1.530 |
| 40-1.350SS | 0.041 | 1.371 | 1.453 |
| 213-1.372 | 0.213 | 1.372 | 1.798 |
| 48-1.375 | 0.048 | 1.375 | 1.471 |
| 259-1.375 | 0.259 | 1.375 | 1.893 |
| 70-1.370ES | 0.070 | 1.376 | 1.516 |
| 30-1.377ES | 0.030 | 1.379 | 1.439 |
| 210-1.373VS | 0.211 | 1.379 | 1.801 |
| 157-1.388SS | 0.156 | 1.380 | 1.692 |
| 148-1.385 | 0.148 | 1.385 | 1.681 |
| 71-1.387 | 0.071 | 1.387 | 1.529 |
| 77-1.362VS | 0.078 | 1.387 | 1.543 |
| 45-1.395 | 0.045 | 1.395 | 1.485 |
| 70-1.378VS | 0.071 | 1.397 | 1.539 |
| 180-1.402 | 0.180 | 1.402 | 1.762 |
| 264-1.406 | 0.264 | 1.406 | 1.934 |
| 286-1.407 | 0.286 | 1.407 | 1.979 |
| 63-1.394SS | 0.064 | 1.408 | 1.536 |
| 60-1.403ES | 0.060 | 1.410 | 1.530 |
| 299-1.410 | 0.299 | 1.410 | 2.008 |
| 50-1.406 | 0.050 | 1.411 | 1.511 |
| 90-1.387SS | 0.092 | 1.411 | 1.595 |
| 75-1.414 | 0.075 | 1.414 | 1.564 |
| 60-1.415 | 0.060 | 1.415 | 1.535 |
| 93-1.415 | 0.093 | 1.415 | 1.601 |
| 78-1.417 | 0.078 | 1.417 | 1.573 |
| 50-1.420 | 0.050 | 1.420 | 1.520 |
| 70-1.424 | 0.070 | 1.424 | 1.564 |
| 111-1.424 | 0.111 | 1.424 | 1.646 |
| 50-1.419ES | 0.050 | 1.426 | 1.526 |
| 98-1.417VS | 0.099 | 1.426 | 1.624 |
| 70-1.427 | 0.070 | 1.427 | 1.567 |
| 70-1.424SS | 0.070 | 1.432 | 1.572 |
| 140-1.434 | 0.140 | 1.434 | 1.714 |
| 39-1.437 | 0.039 | 1.437 | 1.515 |
| 94-1.437 | 0.094 | 1.437 | 1.625 |
| 250-1.438 | 0.250 | 1.438 | 1.938 |
| 430-1.438 | 0.430 | 1.438 | 2.298 |

Precision Associates, Inc.
3800 N. Washington Ave.
Minneapolis, MN 55412

Phone: 612-333-7464
Fax: 612-342-2417
Toll: 800-394-6590

www.PrecisionAssoc.com



O-Rings Special Size



| Mold IDen | C/S | ID | OD (Ref) |
|-------------|-------|-------|----------|
| 105-1.452 | 0.105 | 1.452 | 1.662 |
| 47-1.453 | 0.047 | 1.453 | 1.547 |
| 70-1.437SS | 0.071 | 1.454 | 1.596 |
| 168-1.460 | 0.168 | 1.460 | 1.796 |
| 70-1.465 | 0.070 | 1.465 | 1.605 |
| 79-1.457ES | 0.080 | 1.466 | 1.626 |
| 65-1.465ES | 0.065 | 1.472 | 1.602 |
| 176-1.475 | 0.176 | 1.475 | 1.827 |
| 39-1.476 | 0.039 | 1.476 | 1.554 |
| 144-1.484 | 0.144 | 1.484 | 1.772 |
| 38-1.463SS | 0.039 | 1.485 | 1.563 |
| 62-1.485 | 0.062 | 1.485 | 1.609 |
| 63-1.472ES | 0.064 | 1.486 | 1.614 |
| 81-1.489 | 0.081 | 1.489 | 1.651 |
| 31-1.491 | 0.031 | 1.491 | 1.553 |
| 140-1.491 | 0.140 | 1.491 | 1.771 |
| 74-1.489ES | 0.074 | 1.493 | 1.641 |
| 138-1.491ES | 0.138 | 1.493 | 1.769 |
| 234-1.493 | 0.234 | 1.493 | 1.961 |
| 50-1.500 | 0.050 | 1.500 | 1.600 |
| 55-1.500 | 0.055 | 1.500 | 1.610 |
| 437-1.500 | 0.437 | 1.500 | 2.374 |
| 500-1.500 | 0.500 | 1.500 | 2.500 |
| 47-1.484SS | 0.048 | 1.501 | 1.597 |
| 104-1.501 | 0.104 | 1.501 | 1.709 |
| 45-1.510 | 0.045 | 1.510 | 1.600 |
| 71-1.510 | 0.071 | 1.510 | 1.652 |
| 125-1.515 | 0.125 | 1.515 | 1.765 |
| 231-1.500VS | 0.234 | 1.519 | 1.987 |
| 56-1.506SS | 0.057 | 1.520 | 1.634 |
| 114-1.520 | 0.114 | 1.520 | 1.748 |
| 59-1.535 | 0.059 | 1.535 | 1.653 |
| 40-1.520VS | 0.040 | 1.536 | 1.616 |
| 50-1.527ES | 0.050 | 1.536 | 1.636 |
| 210-1.537 | 0.210 | 1.537 | 1.957 |
| 45-1.540 | 0.045 | 1.540 | 1.630 |
| 70-1.545 | 0.070 | 1.545 | 1.685 |
| 139-1.546 | 0.139 | 1.546 | 1.824 |
| 92-1.550 | 0.092 | 1.550 | 1.734 |
| 176-1.550 | 0.176 | 1.550 | 1.902 |
| 55-1.560 | 0.055 | 1.560 | 1.670 |
| 250-1.562 | 0.250 | 1.562 | 2.062 |
| 118-1.543VS | 0.119 | 1.563 | 1.801 |
| 39-1.574NS | 0.039 | 1.569 | 1.647 |
| 32-1.559SS | 0.032 | 1.574 | 1.638 |

| Mold IDen | C/S | ID | OD (Ref) |
|-------------|-------|-------|----------|
| 67-1.541SS | 0.068 | 1.574 | 1.710 |
| 47-1.575 | 0.047 | 1.575 | 1.669 |
| 125-1.575 | 0.125 | 1.575 | 1.825 |
| 157-1.575 | 0.157 | 1.575 | 1.889 |
| 76-1.580 | 0.076 | 1.580 | 1.732 |
| 118-1.583SS | 0.119 | 1.593 | 1.831 |
| 312-1.594 | 0.312 | 1.594 | 2.218 |
| 225-1.595PL | 0.225 | 1.595 | 2.045 |
| 45-1.600 | 0.045 | 1.600 | 1.690 |
| 176-1.600 | 0.176 | 1.600 | 1.952 |
| 180-1.600 | 0.180 | 1.600 | 1.960 |
| 118-1.595VS | 0.119 | 1.602 | 1.840 |
| 237-1.597SS | 0.238 | 1.603 | 2.079 |
| 78-1.609 | 0.078 | 1.609 | 1.765 |
| 140-1.616 | 0.140 | 1.616 | 1.896 |
| 212-1.616 | 0.212 | 1.616 | 2.040 |
| 59-1.623 | 0.059 | 1.623 | 1.741 |
| 375-1.625 | 0.375 | 1.625 | 2.375 |
| 104-1.628 | 0.104 | 1.628 | 1.836 |
| 71-1.629 | 0.071 | 1.629 | 1.771 |
| 141-1.629 | 0.141 | 1.629 | 1.911 |
| 70-1.614SS | 0.071 | 1.634 | 1.776 |
| 29-1.620SS | 0.029 | 1.635 | 1.693 |
| 30-1.635 | 0.030 | 1.635 | 1.695 |
| 103-1.612SS | 0.105 | 1.637 | 1.847 |
| 73-1.639 | 0.073 | 1.639 | 1.785 |
| 45-1.650 | 0.045 | 1.650 | 1.740 |
| 50-1.640VS | 0.050 | 1.651 | 1.751 |
| 275-1.655 | 0.275 | 1.655 | 2.205 |
| 250-1.660 | 0.250 | 1.660 | 2.160 |
| 70-1.662 | 0.070 | 1.662 | 1.802 |
| 70-1.670 | 0.070 | 1.670 | 1.810 |
| 47-1.672 | 0.047 | 1.672 | 1.766 |
| 108-1.674 | 0.108 | 1.674 | 1.890 |
| 50-1.675 | 0.050 | 1.675 | 1.775 |
| 107-1.675 | 0.107 | 1.675 | 1.889 |
| 93-1.689NS | 0.093 | 1.685 | 1.871 |
| 62-1.686 | 0.062 | 1.686 | 1.810 |
| 70-1.687 | 0.070 | 1.687 | 1.827 |
| 70-1.690NS | 0.070 | 1.687 | 1.827 |
| 125-1.688 | 0.125 | 1.688 | 1.938 |
| 118-1.673VS | 0.119 | 1.689 | 1.927 |
| 50-1.690 | 0.050 | 1.690 | 1.790 |
| 750-1.690 | 0.750 | 1.690 | 3.190 |
| 167-1.693 | 0.167 | 1.693 | 2.027 |

Precision Associates, Inc.

3800 N. Washington Ave.
Minneapolis, MN 55412

28

Phone: 612-333-7464

Fax: 612-342-2417

Toll: 800-394-6590

www.PrecisionAssoc.com



O-Rings Special Size



| Mold IDen | C/S | ID | OD (Ref) |
|-------------|-------|-------|----------|
| 29-1.692SS | 0.029 | 1.709 | 1.767 |
| 103-1.718 | 0.103 | 1.718 | 1.924 |
| 357-1.719 | 0.357 | 1.719 | 2.433 |
| 31-1.718 | 0.031 | 1.724 | 1.786 |
| 176-1.725 | 0.176 | 1.725 | 2.077 |
| 39-1.732 | 0.039 | 1.732 | 1.810 |
| 59-1.732 | 0.059 | 1.732 | 1.850 |
| 62-1.740 | 0.062 | 1.740 | 1.864 |
| 285-1.735VS | 0.286 | 1.741 | 2.313 |
| 93-1.750 | 0.093 | 1.744 | 1.930 |
| 225-1.745 | 0.225 | 1.745 | 2.195 |
| 176-1.747 | 0.176 | 1.747 | 2.099 |
| 140-1.750 | 0.140 | 1.750 | 2.030 |
| 250-1.750 | 0.250 | 1.750 | 2.250 |
| 275-1.745VS | 0.276 | 1.751 | 2.303 |
| 104-1.754 | 0.104 | 1.754 | 1.962 |
| 71-1.756 | 0.071 | 1.756 | 1.898 |
| 114-1.756 | 0.114 | 1.756 | 1.984 |
| 70-1.738VS | 0.071 | 1.761 | 1.903 |
| 62-1.772 | 0.062 | 1.772 | 1.896 |
| 79-1.772 | 0.079 | 1.772 | 1.930 |
| 98-1.772 | 0.098 | 1.772 | 1.968 |
| 210-1.772 | 0.210 | 1.772 | 2.192 |
| 50-1.764ES | 0.050 | 1.774 | 1.874 |
| 50-1.750SS | 0.051 | 1.775 | 1.877 |
| 55-1.775 | 0.055 | 1.775 | 1.885 |
| 70-1.775 | 0.070 | 1.775 | 1.915 |
| 39-1.772SS | 0.039 | 1.787 | 1.865 |
| 210-1.787 | 0.210 | 1.787 | 2.207 |
| 32-1.790 | 0.032 | 1.790 | 1.854 |
| 139-1.790 | 0.139 | 1.790 | 2.068 |
| 50-1.796 | 0.050 | 1.796 | 1.896 |
| 70-1.799 | 0.070 | 1.799 | 1.939 |
| 46-1.800 | 0.046 | 1.807 | 1.899 |
| 104-1.808 | 0.104 | 1.808 | 2.016 |
| 103-1.812 | 0.103 | 1.812 | 2.018 |
| 125-1.812 | 0.125 | 1.812 | 2.062 |
| 40-1.828 | 0.040 | 1.828 | 1.908 |
| 70-1.830 | 0.070 | 1.830 | 1.970 |
| 75-1.840 | 0.075 | 1.840 | 1.990 |
| 237-1.848 | 0.237 | 1.848 | 2.322 |
| 79-1.850 | 0.079 | 1.850 | 2.008 |
| 176-1.850 | 0.176 | 1.850 | 2.202 |
| 40-1.856 | 0.040 | 1.856 | 1.936 |
| 40-1.860 | 0.040 | 1.860 | 1.940 |

| Mold IDen | C/S | ID | OD (Ref) |
|-------------|-------|-------|----------|
| 250-1.860 | 0.250 | 1.860 | 2.360 |
| 28-1.844SS | 0.028 | 1.864 | 1.920 |
| 50-1.864 | 0.050 | 1.864 | 1.964 |
| 235-1.845SS | 0.238 | 1.869 | 2.345 |
| 500-1.875 | 0.500 | 1.875 | 2.875 |
| 140-1.878 | 0.140 | 1.878 | 2.158 |
| 39-1.889NS | 0.039 | 1.883 | 1.961 |
| 93-1.888 | 0.093 | 1.888 | 2.074 |
| 119-1.888 | 0.119 | 1.888 | 2.126 |
| 47-1.891 | 0.047 | 1.891 | 1.985 |
| 70-1.864SS | 0.071 | 1.900 | 2.042 |
| 215-1.890VS | 0.217 | 1.905 | 2.339 |
| 375-1.906 | 0.375 | 1.906 | 2.656 |
| 103-1.889SS | 0.104 | 1.909 | 2.117 |
| 93-1.888ES | 0.094 | 1.910 | 2.098 |
| 210-1.912 | 0.210 | 1.912 | 2.332 |
| 80-1.921 | 0.080 | 1.921 | 2.081 |
| 31-1.895SS | 0.031 | 1.925 | 1.987 |
| 70-1.927 | 0.070 | 1.927 | 2.067 |
| 43-1.934 | 0.043 | 1.934 | 2.020 |
| 47-1.934 | 0.047 | 1.934 | 2.028 |
| 450-1.937 | 0.450 | 1.937 | 2.837 |
| 104-1.943 | 0.104 | 1.943 | 2.151 |
| 70-1.927VS | 0.071 | 1.946 | 2.088 |
| 125-1.950 | 0.125 | 1.950 | 2.200 |
| 210-1.950 | 0.210 | 1.950 | 2.370 |
| 40-1.958 | 0.040 | 1.958 | 2.038 |
| 224-1.941VS | 0.226 | 1.959 | 2.411 |
| 47-1.954 | 0.047 | 1.961 | 2.055 |
| 47-1.954SS | 0.047 | 1.961 | 2.055 |
| 125-1.968 | 0.125 | 1.967 | 2.217 |
| 103-1.968 | 0.103 | 1.968 | 2.174 |
| 157-1.968 | 0.157 | 1.968 | 2.282 |
| 176-1.944SS | 0.178 | 1.968 | 2.324 |
| 39-1.969 | 0.039 | 1.969 | 2.047 |
| 63-1.969 | 0.063 | 1.969 | 2.095 |
| 176-1.975 | 0.176 | 1.975 | 2.327 |
| 210-1.975PL | 0.210 | 1.975 | 2.395 |
| 147-1.976 | 0.147 | 1.976 | 2.270 |
| 39-1.969SS | 0.039 | 1.977 | 2.055 |
| 38-1.984 | 0.038 | 1.984 | 2.060 |
| 38-1.980ES | 0.038 | 1.985 | 2.061 |
| 118-1.969SS | 0.119 | 1.986 | 2.224 |
| 211-1.989 | 0.211 | 1.989 | 2.411 |
| 282-1.986VS | 0.283 | 1.995 | 2.561 |

Precision Associates, Inc.
3800 N. Washington Ave.
Minneapolis, MN 55412

Phone: 612-333-7464
Fax: 612-342-2417
Toll: 800-394-6590

www.PrecisionAssoc.com



O-Rings Special Size



| Mold IDen | C/S | ID | OD (Ref) |
|-------------|-------|-------|----------|
| 139-1.954SS | 0.142 | 1.996 | 2.280 |
| 104-1.997 | 0.104 | 1.997 | 2.205 |
| 60-1.993ES | 0.060 | 1.998 | 2.118 |
| 25-2.000 | 0.025 | 2.000 | 2.050 |
| 80-2.000 | 0.080 | 2.000 | 2.160 |
| 118-2.008NS | 0.118 | 2.000 | 2.236 |
| 156-2.000 | 0.156 | 2.000 | 2.312 |
| 140-2.003 | 0.140 | 2.003 | 2.283 |
| 71-2.014 | 0.071 | 2.014 | 2.156 |
| 60-1.993SS | 0.061 | 2.021 | 2.143 |
| 285-2.027 | 0.285 | 2.027 | 2.597 |
| 335-2.027 | 0.335 | 2.027 | 2.697 |
| 105-2.028 | 0.105 | 2.028 | 2.238 |
| 70-2.030 | 0.070 | 2.030 | 2.170 |
| 101-2.015SS | 0.102 | 2.030 | 2.234 |
| 139-2.046 | 0.139 | 2.046 | 2.324 |
| 63-2.050 | 0.063 | 2.050 | 2.176 |
| 70-2.050 | 0.070 | 2.050 | 2.190 |
| 224-2.052 | 0.224 | 2.052 | 2.500 |
| 70-2.057ES | 0.070 | 2.060 | 2.200 |
| 75-2.066 | 0.075 | 2.066 | 2.216 |
| 50-2.070 | 0.050 | 2.070 | 2.170 |
| 93-2.065VS | 0.093 | 2.070 | 2.256 |
| 243-2.060VS | 0.245 | 2.077 | 2.567 |
| 176-2.085 | 0.176 | 2.085 | 2.437 |
| 40-2.044SS | 0.041 | 2.087 | 2.169 |
| 36-2.050SS | 0.037 | 2.089 | 2.163 |
| 176-2.100 | 0.176 | 2.100 | 2.452 |
| 70-2.093SS | 0.070 | 2.102 | 2.242 |
| 108-2.100VS | 0.109 | 2.117 | 2.335 |
| 104-2.122 | 0.104 | 2.122 | 2.330 |
| 47-2.115SS | 0.047 | 2.124 | 2.218 |
| 70-2.124 | 0.070 | 2.124 | 2.264 |
| 78-2.125 | 0.078 | 2.125 | 2.281 |
| 187-2.125 | 0.187 | 2.125 | 2.499 |
| 59-2.126 | 0.059 | 2.126 | 2.244 |
| 140-2.131 | 0.140 | 2.131 | 2.411 |
| 158-2.126ES | 0.159 | 2.137 | 2.455 |
| 79-2.135ES | 0.079 | 2.140 | 2.298 |
| 125-2.140 | 0.125 | 2.140 | 2.390 |
| 47-2.141 | 0.047 | 2.141 | 2.235 |
| 47-2.141ES | 0.047 | 2.146 | 2.240 |
| 40-2.152 | 0.040 | 2.152 | 2.232 |
| 70-2.156 | 0.070 | 2.156 | 2.296 |
| 210-2.162 | 0.210 | 2.162 | 2.582 |

| Mold IDen | C/S | ID | OD (Ref) |
|-------------|-------|-------|----------|
| 70-2.146VS | 0.071 | 2.167 | 2.309 |
| 176-2.145VS | 0.178 | 2.169 | 2.525 |
| 70-2.175 | 0.070 | 2.175 | 2.315 |
| 40-2.177 | 0.040 | 2.177 | 2.257 |
| 62-2.187 | 0.062 | 2.187 | 2.311 |
| 185-2.187 | 0.185 | 2.187 | 2.557 |
| 70-2.175VS | 0.071 | 2.195 | 2.337 |
| 104-2.196 | 0.104 | 2.196 | 2.404 |
| 42-2.199 | 0.042 | 2.199 | 2.283 |
| 250-2.200 | 0.250 | 2.200 | 2.700 |
| 70-2.180VS | 0.071 | 2.201 | 2.343 |
| 118-2.175VS | 0.119 | 2.201 | 2.439 |
| 176-2.225 | 0.176 | 2.225 | 2.577 |
| 83-2.226 | 0.083 | 2.226 | 2.392 |
| 114-2.228 | 0.114 | 2.228 | 2.456 |
| 50-2.220VS | 0.050 | 2.235 | 2.335 |
| 245-2.235 | 0.245 | 2.235 | 2.725 |
| 215-2.231ES | 0.216 | 2.241 | 2.673 |
| 104-2.248 | 0.104 | 2.248 | 2.456 |
| 40-2.249 | 0.040 | 2.249 | 2.329 |
| 70-2.249 | 0.070 | 2.249 | 2.389 |
| 70-2.250 | 0.070 | 2.250 | 2.390 |
| 125-2.250 | 0.125 | 2.250 | 2.500 |
| 275-2.250 | 0.275 | 2.250 | 2.800 |
| 625-2.250 | 0.625 | 2.250 | 3.500 |
| 140-2.256 | 0.140 | 2.256 | 2.536 |
| 48-2.236SS | 0.048 | 2.260 | 2.356 |
| 187-2.272 | 0.187 | 2.272 | 2.646 |
| 93-2.277 | 0.093 | 2.277 | 2.463 |
| 98-2.283 | 0.098 | 2.283 | 2.479 |
| 60-2.287 | 0.060 | 2.287 | 2.407 |
| 79-2.283ES | 0.080 | 2.304 | 2.464 |
| 312-2.312 | 0.311 | 2.304 | 2.926 |
| 32-2.248SS | 0.032 | 2.306 | 2.370 |
| 70-2.307 | 0.070 | 2.307 | 2.447 |
| 104-2.311 | 0.104 | 2.311 | 2.519 |
| 375-2.335NS | 0.372 | 2.319 | 3.063 |
| 168-2.328 | 0.168 | 2.328 | 2.664 |
| 103-2.340 | 0.103 | 2.340 | 2.546 |
| 40-2.342 | 0.040 | 2.342 | 2.422 |
| 118-2.342 | 0.118 | 2.342 | 2.578 |
| 47-2.350 | 0.047 | 2.350 | 2.444 |
| 176-2.350 | 0.176 | 2.350 | 2.702 |
| 313-2.350 | 0.313 | 2.350 | 2.976 |
| 79-2.362 | 0.079 | 2.362 | 2.520 |

Precision Associates, Inc.

3800 N. Washington Ave.
Minneapolis, MN 55412

30

Phone: 612-333-7464

Fax: 612-342-2417

Toll: 800-394-6590

www.PrecisionAssoc.com



O-Rings Special Size



| Mold IDen | C/S | ID | OD (Ref) |
|-------------|-------|-------|----------|
| 217-2.362 | 0.217 | 2.362 | 2.796 |
| 224-2.362 | 0.224 | 2.362 | 2.810 |
| 215-2.373 | 0.215 | 2.373 | 2.803 |
| 104-2.374 | 0.104 | 2.374 | 2.582 |
| 187-2.375 | 0.187 | 2.375 | 2.749 |
| 375-2.375 | 0.375 | 2.375 | 3.125 |
| 140-2.381 | 0.140 | 2.381 | 2.661 |
| 275-2.385 | 0.275 | 2.385 | 2.935 |
| 394-2.362SS | 0.397 | 2.385 | 3.179 |
| 281-2.391 | 0.281 | 2.391 | 2.953 |
| 53-2.394 | 0.053 | 2.394 | 2.500 |
| 103-2.394 | 0.103 | 2.394 | 2.600 |
| 105-2.396 | 0.105 | 2.396 | 2.606 |
| 500-2.375SS | 0.505 | 2.397 | 3.407 |
| 17-2.400 | 0.017 | 2.400 | 2.434 |
| 40-2.400 | 0.040 | 2.400 | 2.480 |
| 150-2.400 | 0.150 | 2.400 | 2.700 |
| 319-2.411 | 0.319 | 2.411 | 3.049 |
| 70-2.425 | 0.070 | 2.425 | 2.565 |
| 139-2.425 | 0.139 | 2.425 | 2.703 |
| 70-2.440 | 0.070 | 2.440 | 2.580 |
| 70-2.410SS | 0.071 | 2.447 | 2.589 |
| 104-2.449 | 0.104 | 2.449 | 2.657 |
| 103-2.450 | 0.103 | 2.450 | 2.656 |
| 118-2.441VS | 0.119 | 2.455 | 2.693 |
| 238-2.458 | 0.238 | 2.458 | 2.934 |
| 179-2.459 | 0.179 | 2.459 | 2.817 |
| 260-2.476 | 0.260 | 2.473 | 2.993 |
| 176-2.475 | 0.176 | 2.475 | 2.827 |
| 30-2.472SS | 0.030 | 2.482 | 2.542 |
| 108-2.487 | 0.108 | 2.487 | 2.703 |
| 282-2.490VS | 0.283 | 2.499 | 3.065 |
| 105-2.500 | 0.105 | 2.500 | 2.710 |
| 375-2.500 | 0.375 | 2.500 | 3.250 |
| 79-2.480SS | 0.080 | 2.508 | 2.668 |
| 104-2.511 | 0.104 | 2.511 | 2.719 |
| 32-2.500SS | 0.032 | 2.524 | 2.588 |
| 47-2.495SS | 0.048 | 2.524 | 2.620 |
| 50-2.520VS | 0.050 | 2.534 | 2.634 |
| 40-2.550 | 0.040 | 2.550 | 2.630 |
| 118-2.520VS | 0.120 | 2.551 | 2.791 |
| 70-2.560 | 0.070 | 2.560 | 2.700 |
| 187-2.562 | 0.187 | 2.562 | 2.936 |
| 104-2.563 | 0.104 | 2.563 | 2.771 |
| 312-2.564 | 0.312 | 2.564 | 3.188 |

| Mold IDen | C/S | ID | OD (Ref) |
|-------------|-------|-------|----------|
| 176-2.534SS | 0.179 | 2.573 | 2.931 |
| 104-2.575 | 0.104 | 2.575 | 2.783 |
| 80-2.585 | 0.080 | 2.585 | 2.745 |
| 209-2.587 | 0.209 | 2.587 | 3.005 |
| 209-2.592 | 0.209 | 2.592 | 3.010 |
| 118-2.584ES | 0.119 | 2.596 | 2.834 |
| 176-2.596 | 0.176 | 2.596 | 2.948 |
| 139-2.601 | 0.139 | 2.601 | 2.879 |
| 375-2.608 | 0.375 | 2.608 | 3.358 |
| 176-2.600SS | 0.178 | 2.622 | 2.978 |
| 375-2.625 | 0.375 | 2.625 | 3.375 |
| 70-2.627 | 0.070 | 2.627 | 2.767 |
| 144-2.629 | 0.144 | 2.629 | 2.917 |
| 104-2.637 | 0.104 | 2.637 | 2.845 |
| 47-2.641 | 0.047 | 2.641 | 2.735 |
| 48-2.666 | 0.048 | 2.666 | 2.762 |
| 71-2.638VS | 0.072 | 2.666 | 2.810 |
| 139-2.671 | 0.139 | 2.671 | 2.949 |
| 70-2.677 | 0.070 | 2.677 | 2.817 |
| 115-2.683 | 0.115 | 2.683 | 2.913 |
| 104-2.688 | 0.104 | 2.688 | 2.896 |
| 84-2.661SS | 0.085 | 2.702 | 2.872 |
| 70-2.690VS | 0.071 | 2.715 | 2.857 |
| 50-2.719 | 0.050 | 2.719 | 2.819 |
| 176-2.725 | 0.176 | 2.725 | 3.077 |
| 250-2.725 | 0.250 | 2.725 | 3.225 |
| 103-2.675SS | 0.105 | 2.726 | 2.936 |
| 250-2.750 | 0.250 | 2.750 | 3.250 |
| 70-2.753 | 0.070 | 2.753 | 2.893 |
| 70-2.750ES | 0.070 | 2.754 | 2.894 |
| 330-2.755 | 0.330 | 2.755 | 3.415 |
| 140-2.761 | 0.140 | 2.761 | 3.041 |
| 63-2.766 | 0.063 | 2.766 | 2.892 |
| 268-2.763 | 0.268 | 2.767 | 3.303 |
| 176-2.725VS | 0.179 | 2.769 | 3.127 |
| 125-2.750SS | 0.126 | 2.776 | 3.028 |
| 125-2.756SS | 0.126 | 2.782 | 3.034 |
| 70-2.739SS | 0.071 | 2.792 | 2.934 |
| 70-2.800 | 0.070 | 2.800 | 2.940 |
| 312-2.812 | 0.311 | 2.803 | 3.425 |
| 104-2.814 | 0.104 | 2.814 | 3.022 |
| 103-2.830 | 0.103 | 2.830 | 3.036 |
| 90-2.832 | 0.090 | 2.832 | 3.012 |
| 59-2.835ES | 0.059 | 2.839 | 2.957 |
| 176-2.850 | 0.176 | 2.850 | 3.202 |

Precision Associates, Inc.
3800 N. Washington Ave.
Minneapolis, MN 55412

Phone: 612-333-7464
Fax: 612-342-2417
Toll: 800-394-6590

www.PrecisionAssoc.com



O-Rings Special Size



| Mold IDen | C/S | ID | OD (Ref) |
|-------------|-------|-------|----------|
| 148-2.859 | 0.148 | 2.859 | 3.155 |
| 157-2.835VS | 0.158 | 2.859 | 3.175 |
| 141-2.874 | 0.141 | 2.874 | 3.156 |
| 40-2.875 | 0.040 | 2.875 | 2.955 |
| 85-2.875 | 0.085 | 2.875 | 3.045 |
| 375-2.875 | 0.375 | 2.875 | 3.625 |
| 437-2.875 | 0.437 | 2.875 | 3.749 |
| 104-2.874 | 0.104 | 2.876 | 3.084 |
| 70-2.878 | 0.070 | 2.878 | 3.018 |
| 140-2.887 | 0.140 | 2.887 | 3.167 |
| 312-2.875SS | 0.315 | 2.905 | 3.535 |
| 118-2.913 | 0.118 | 2.913 | 3.149 |
| 78-2.919 | 0.078 | 2.919 | 3.075 |
| 70-2.921 | 0.070 | 2.921 | 3.061 |
| 197-2.921 | 0.197 | 2.921 | 3.315 |
| 177-2.925 | 0.177 | 2.925 | 3.279 |
| 375-2.930 | 0.375 | 2.930 | 3.680 |
| 103-2.935ES | 0.103 | 2.932 | 3.138 |
| 147-2.935 | 0.147 | 2.935 | 3.229 |
| 224-2.925 | 0.226 | 2.945 | 3.397 |
| 79-2.943ES | 0.079 | 2.950 | 3.108 |
| 70-2.950ES | 0.070 | 2.954 | 3.094 |
| 152-2.965 | 0.152 | 2.965 | 3.269 |
| 176-2.975 | 0.176 | 2.975 | 3.327 |
| 370-2.982 | 0.370 | 2.982 | 3.722 |
| 140-2.997 | 0.140 | 2.997 | 3.277 |
| 40-3.000 | 0.040 | 3.000 | 3.080 |
| 103-3.000 | 0.103 | 3.000 | 3.206 |
| 220-2.975VS | 0.222 | 3.003 | 3.447 |
| 104-3.016 | 0.104 | 3.016 | 3.224 |
| 140-3.018 | 0.140 | 3.018 | 3.298 |
| 130-3.062 | 0.130 | 3.062 | 3.322 |
| 70-3.085 | 0.070 | 3.085 | 3.225 |
| 158-3.071ES | 0.159 | 3.086 | 3.404 |
| 83-3.083 | 0.083 | 3.087 | 3.253 |
| 176-3.100 | 0.176 | 3.100 | 3.452 |
| 103-3.109 | 0.103 | 3.109 | 3.315 |
| 47-3.053SS | 0.048 | 3.112 | 3.208 |
| 176-3.115 | 0.176 | 3.115 | 3.467 |
| 44-3.038SS | 0.045 | 3.122 | 3.212 |
| 140-3.123 | 0.140 | 3.123 | 3.403 |
| 118-3.130 | 0.118 | 3.130 | 3.366 |
| 330-3.137 | 0.330 | 3.137 | 3.797 |
| 30-3.145 | 0.030 | 3.145 | 3.205 |
| 70-3.114VS | 0.071 | 3.146 | 3.288 |

| Mold IDen | C/S | ID | OD (Ref) |
|-------------|-------|-------|----------|
| 103-3.147 | 0.103 | 3.147 | 3.353 |
| 141-3.150 | 0.141 | 3.150 | 3.432 |
| 60-3.156 | 0.060 | 3.156 | 3.276 |
| 310-3.136SS | 0.313 | 3.165 | 3.791 |
| 214-3.166 | 0.214 | 3.166 | 3.594 |
| 60-3.115SS | 0.061 | 3.175 | 3.297 |
| 60-3.167SS | 0.061 | 3.202 | 3.324 |
| 63-3.125VS | 0.066 | 3.203 | 3.335 |
| 98-3.189VS | 0.099 | 3.211 | 3.409 |
| 103-3.185SS | 0.104 | 3.222 | 3.430 |
| 176-3.225 | 0.176 | 3.225 | 3.577 |
| 40-3.200SS | 0.040 | 3.230 | 3.310 |
| 65-3.239 | 0.065 | 3.239 | 3.369 |
| 140-3.248 | 0.140 | 3.248 | 3.528 |
| 250-3.250 | 0.250 | 3.250 | 3.750 |
| 104-3.253 | 0.104 | 3.253 | 3.461 |
| 170-3.253 | 0.170 | 3.253 | 3.593 |
| 212-3.255 | 0.212 | 3.255 | 3.679 |
| 79-3.218VS | 0.080 | 3.257 | 3.417 |
| 185-3.260 | 0.185 | 3.260 | 3.630 |
| 93-3.237ES | 0.094 | 3.266 | 3.454 |
| 71-3.269 | 0.071 | 3.269 | 3.411 |
| 141-3.282 | 0.141 | 3.282 | 3.564 |
| 103-3.290 | 0.103 | 3.290 | 3.496 |
| 275-3.252SS | 0.279 | 3.299 | 3.857 |
| 87-3.307 | 0.087 | 3.307 | 3.481 |
| 187-3.312 | 0.187 | 3.312 | 3.686 |
| 312-3.300SS | 0.315 | 3.331 | 3.961 |
| 375-3.325SS | 0.377 | 3.346 | 4.100 |
| 176-3.350 | 0.176 | 3.350 | 3.702 |
| 103-3.359 | 0.103 | 3.359 | 3.565 |
| 103-3.362 | 0.103 | 3.362 | 3.568 |
| 211-3.366 | 0.211 | 3.366 | 3.788 |
| 70-3.376NS | 0.070 | 3.369 | 3.509 |
| 140-3.374 | 0.140 | 3.374 | 3.654 |
| 80-3.375 | 0.080 | 3.375 | 3.535 |
| 203-3.375 | 0.204 | 3.384 | 3.792 |
| 103-3.400 | 0.103 | 3.400 | 3.606 |
| 40-3.370VS | 0.040 | 3.402 | 3.482 |
| 103-3.410ES | 0.103 | 3.415 | 3.621 |
| 111-3.422 | 0.111 | 3.422 | 3.644 |
| 70-3.440 | 0.070 | 3.440 | 3.580 |
| 152-3.420VS | 0.153 | 3.449 | 3.755 |
| 46-3.455 | 0.046 | 3.455 | 3.547 |
| 103-3.460ES | 0.103 | 3.469 | 3.675 |

Precision Associates, Inc.

3800 N. Washington Ave.
Minneapolis, MN 55412

32

Phone: 612-333-7464

Fax: 612-342-2417

Toll: 800-394-6590

www.PrecisionAssoc.com



O-Rings Special Size



| Mold IDen | C/S | ID | OD (Ref) |
|-------------|-------|-------|----------|
| 70-3.474 | 0.070 | 3.474 | 3.614 |
| 176-3.475 | 0.176 | 3.475 | 3.827 |
| 300-3.475 | 0.300 | 3.475 | 4.075 |
| 80-3.500 | 0.080 | 3.500 | 3.660 |
| 140-3.500 | 0.140 | 3.500 | 3.780 |
| 156-3.500 | 0.156 | 3.500 | 3.812 |
| 500-3.500 | 0.500 | 3.500 | 4.500 |
| 84-3.506 | 0.084 | 3.506 | 3.674 |
| 80-3.483VS | 0.081 | 3.509 | 3.671 |
| 179-3.522 | 0.178 | 3.510 | 3.866 |
| 104-3.520 | 0.104 | 3.520 | 3.728 |
| 122-3.520 | 0.122 | 3.520 | 3.764 |
| 230-3.475VS | 0.233 | 3.521 | 3.987 |
| 71-3.523 | 0.071 | 3.523 | 3.665 |
| 70-3.562 | 0.070 | 3.562 | 3.702 |
| 125-3.562 | 0.125 | 3.562 | 3.812 |
| 248-3.575 | 0.248 | 3.575 | 4.071 |
| 125-3.543SS | 0.127 | 3.597 | 3.851 |
| 75-3.600 | 0.075 | 3.600 | 3.750 |
| 176-3.600 | 0.176 | 3.600 | 3.952 |
| 103-3.612 | 0.103 | 3.612 | 3.818 |
| 256-3.563SS | 0.260 | 3.614 | 4.134 |
| 375-3.622 | 0.375 | 3.622 | 4.372 |
| 140-3.625 | 0.140 | 3.625 | 3.905 |
| 212-3.635 | 0.212 | 3.635 | 4.059 |
| 125-3.640 | 0.125 | 3.640 | 3.890 |
| 210-3.640 | 0.210 | 3.640 | 4.060 |
| 212-3.641 | 0.212 | 3.641 | 4.065 |
| 58-3.645 | 0.058 | 3.645 | 3.761 |
| 147-3.656 | 0.147 | 3.656 | 3.950 |
| 50-3.670 | 0.050 | 3.661 | 3.761 |
| 90-3.661 | 0.090 | 3.661 | 3.841 |
| 32-3.638SS | 0.032 | 3.674 | 3.738 |
| 500-3.675 | 0.500 | 3.675 | 4.675 |
| 210-3.640SS | 0.212 | 3.678 | 4.102 |
| 50-3.670SS | 0.050 | 3.704 | 3.804 |
| 224-3.724 | 0.224 | 3.724 | 4.172 |
| 176-3.725 | 0.176 | 3.725 | 4.077 |
| 150-3.734 | 0.150 | 3.734 | 4.034 |
| 95-3.744 | 0.095 | 3.744 | 3.934 |
| 104-3.755 | 0.104 | 3.755 | 3.963 |
| 140-3.757 | 0.140 | 3.757 | 4.037 |
| 71-3.776 | 0.071 | 3.776 | 3.918 |
| 158-3.780ES | 0.159 | 3.799 | 4.117 |
| 118-3.819 | 0.118 | 3.819 | 4.055 |

| Mold IDen | C/S | ID | OD (Ref) |
|-------------|-------|-------|----------|
| 125-3.750SS | 0.127 | 3.824 | 4.078 |
| 103-3.837 | 0.103 | 3.837 | 4.043 |
| 281-3.844 | 0.281 | 3.844 | 4.406 |
| 70-3.833ES | 0.070 | 3.845 | 3.985 |
| 176-3.850 | 0.176 | 3.850 | 4.202 |
| 400-3.850 | 0.400 | 3.850 | 4.650 |
| 70-3.840ES | 0.070 | 3.851 | 3.991 |
| 150-3.859 | 0.150 | 3.859 | 4.159 |
| 70-3.860 | 0.070 | 3.860 | 4.000 |
| 140-3.876 | 0.140 | 3.876 | 4.156 |
| 70-3.840VS | 0.071 | 3.878 | 4.020 |
| 103-3.875 | 0.103 | 3.891 | 4.097 |
| 139-3.910 | 0.139 | 3.910 | 4.188 |
| 70-3.937 | 0.070 | 3.937 | 4.077 |
| 500-3.937 | 0.500 | 3.937 | 4.937 |
| 103-3.862 | 0.105 | 3.938 | 4.148 |
| 312-3.938 | 0.312 | 3.938 | 4.562 |
| 176-3.975 | 0.176 | 3.975 | 4.327 |
| 156-3.984 | 0.156 | 3.984 | 4.296 |
| 375-4.006 | 0.375 | 4.006 | 4.756 |
| 140-4.008 | 0.140 | 4.008 | 4.288 |
| 71-4.028 | 0.071 | 4.028 | 4.170 |
| 139-4.046 | 0.139 | 4.036 | 4.314 |
| 139-4.020SS | 0.140 | 4.037 | 4.317 |
| 103-4.093 | 0.103 | 4.093 | 4.299 |
| 224-4.098 | 0.224 | 4.098 | 4.546 |
| 176-4.100 | 0.176 | 4.100 | 4.452 |
| 186-4.095SS | 0.186 | 4.107 | 4.479 |
| 103-4.109 | 0.103 | 4.109 | 4.315 |
| 125-4.109 | 0.125 | 4.109 | 4.359 |
| 211-4.120 | 0.211 | 4.120 | 4.542 |
| 140-4.127 | 0.140 | 4.127 | 4.407 |
| 118-4.134 | 0.118 | 4.134 | 4.370 |
| 155-4.139 | 0.155 | 4.139 | 4.449 |
| 70-4.107SS | 0.071 | 4.147 | 4.289 |
| 103-4.150 | 0.103 | 4.150 | 4.356 |
| 103-4.169 | 0.103 | 4.169 | 4.375 |
| 70-4.180NS | 0.070 | 4.172 | 4.312 |
| 103-4.175 | 0.103 | 4.175 | 4.381 |
| 40-4.140VS | 0.040 | 4.179 | 4.259 |
| 103-4.204ES | 0.103 | 4.215 | 4.421 |
| 140-4.125SS | 0.143 | 4.216 | 4.502 |
| 176-4.225 | 0.176 | 4.225 | 4.577 |
| 83-4.226 | 0.083 | 4.226 | 4.392 |
| 375-4.250 | 0.374 | 4.244 | 4.992 |

Precision Associates, Inc.
3800 N. Washington Ave.
Minneapolis, MN 55412

Phone: 612-333-7464
Fax: 612-342-2417
Toll: 800-394-6590

www.PrecisionAssoc.com



O-Rings Special Size



| Mold IDen | C/S | ID | OD (Ref) |
|-------------|-------|-------|----------|
| 103-4.256 | 0.103 | 4.256 | 4.462 |
| 104-4.258 | 0.104 | 4.258 | 4.466 |
| 140-4.274 | 0.140 | 4.274 | 4.554 |
| 104-4.279 | 0.104 | 4.279 | 4.487 |
| 71-4.281 | 0.071 | 4.281 | 4.423 |
| 375-4.250VS | 0.379 | 4.294 | 5.052 |
| 150-4.295 | 0.150 | 4.295 | 4.595 |
| 70-4.300 | 0.070 | 4.300 | 4.440 |
| 210-4.304 | 0.210 | 4.304 | 4.724 |
| 103-4.300ES | 0.103 | 4.311 | 4.517 |
| 139-4.300ES | 0.139 | 4.311 | 4.589 |
| 313-4.300ES | 0.315 | 4.312 | 4.942 |
| 111-4.322 | 0.111 | 4.322 | 4.544 |
| 215-4.331 | 0.215 | 4.331 | 4.761 |
| 47-4.343 | 0.047 | 4.343 | 4.437 |
| 78-4.266SS | 0.079 | 4.348 | 4.506 |
| 103-4.350 | 0.103 | 4.350 | 4.556 |
| 176-4.350 | 0.176 | 4.350 | 4.702 |
| 103-4.359 | 0.103 | 4.359 | 4.565 |
| 250-4.375 | 0.250 | 4.375 | 4.875 |
| 140-4.379 | 0.140 | 4.379 | 4.659 |
| 44-4.390 | 0.044 | 4.390 | 4.478 |
| 103-4.397 | 0.103 | 4.397 | 4.603 |
| 375-4.438ES | 0.376 | 4.449 | 5.201 |
| 71-4.409VS | 0.072 | 4.455 | 4.599 |
| 60-4.500SS | 0.060 | 4.467 | 4.587 |
| 176-4.475 | 0.176 | 4.475 | 4.827 |
| 220-4.475 | 0.220 | 4.475 | 4.915 |
| 241-4.475 | 0.241 | 4.475 | 4.957 |
| 181-4.488 | 0.181 | 4.488 | 4.850 |
| 103-4.487ES | 0.103 | 4.498 | 4.704 |
| 103-4.487ES | 0.103 | 4.498 | 4.704 |
| 500-4.500 | 0.500 | 4.500 | 5.500 |
| 30-4.523 | 0.030 | 4.507 | 4.567 |
| 140-4.508 | 0.140 | 4.508 | 4.788 |
| 70-4.562 | 0.070 | 4.562 | 4.702 |
| 125-4.600 | 0.125 | 4.600 | 4.850 |
| 188-4.976 | 0.188 | 4.600 | 4.976 |
| 103-4.612 | 0.103 | 4.612 | 4.818 |
| 157-4.606ES | 0.158 | 4.620 | 4.936 |
| 140-4.630 | 0.140 | 4.630 | 4.910 |
| 212-4.645 | 0.212 | 4.645 | 5.069 |
| 103-4.609SS | 0.104 | 4.654 | 4.862 |
| 141-4.654 | 0.141 | 4.654 | 4.936 |
| 70-4.672 | 0.070 | 4.672 | 4.812 |

| Mold IDen | C/S | ID | OD (Ref) |
|-------------|-------|-------|----------|
| 176-4.725 | 0.176 | 4.725 | 5.077 |
| 117-4.750 | 0.117 | 4.734 | 4.968 |
| 219-4.750 | 0.219 | 4.750 | 5.188 |
| 312-4.700ES | 0.316 | 4.754 | 5.386 |
| 140-4.755 | 0.140 | 4.755 | 5.035 |
| 278-4.769 | 0.278 | 4.769 | 5.325 |
| 212-4.774 | 0.212 | 4.774 | 5.198 |
| 315-4.776 | 0.315 | 4.776 | 5.406 |
| 104-4.783 | 0.104 | 4.783 | 4.991 |
| 71-4.784 | 0.071 | 4.784 | 4.926 |
| 625-4.812 | 0.625 | 4.812 | 6.062 |
| 159-4.850 | 0.159 | 4.850 | 5.168 |
| 176-4.850 | 0.176 | 4.850 | 5.202 |
| 241-4.850 | 0.241 | 4.850 | 5.332 |
| 103-4.859 | 0.103 | 4.859 | 5.065 |
| 70-4.864 | 0.070 | 4.864 | 5.004 |
| 455-4.866 | 0.455 | 4.866 | 5.776 |
| 140-4.881 | 0.140 | 4.881 | 5.161 |
| 70-4.890 | 0.070 | 4.890 | 5.030 |
| 103-4.886ES | 0.103 | 4.898 | 5.104 |
| 197-4.921 | 0.197 | 4.921 | 5.315 |
| 141-4.928 | 0.141 | 4.928 | 5.210 |
| 103-4.930 | 0.103 | 4.930 | 5.136 |
| 139-4.910ES | 0.140 | 4.937 | 5.217 |
| 438-4.938 | 0.438 | 4.938 | 5.814 |
| 252-4.905VS | 0.255 | 4.968 | 5.478 |
| 147-4.984 | 0.147 | 4.984 | 5.278 |
| 500-5.000 | 0.500 | 5.000 | 6.000 |
| 140-5.006 | 0.140 | 5.006 | 5.286 |
| 375-5.000SS | 0.377 | 5.023 | 5.777 |
| 147-4.984SS | 0.148 | 5.031 | 5.327 |
| 104-5.036 | 0.104 | 5.036 | 5.244 |
| 71-5.038 | 0.071 | 5.038 | 5.180 |
| 168-5.005VS | 0.170 | 5.057 | 5.397 |
| 103-5.106 | 0.103 | 5.106 | 5.312 |
| 70-5.114 | 0.070 | 5.114 | 5.254 |
| 103-5.117 | 0.103 | 5.117 | 5.323 |
| 1.062-5.125 | 1.062 | 5.125 | 7.249 |
| 103-5.140ES | 0.103 | 5.153 | 5.359 |
| 140-5.159 | 0.140 | 5.159 | 5.439 |
| 170-5.118SS | 0.172 | 5.191 | 5.535 |
| 197-5.197 | 0.197 | 5.197 | 5.591 |
| 50-5.163VS | 0.050 | 5.212 | 5.312 |
| 62-5.250 | 0.062 | 5.250 | 5.374 |
| 211-5.251 | 0.211 | 5.251 | 5.673 |

Precision Associates, Inc.

3800 N. Washington Ave.
Minneapolis, MN 55412

Phone: 612-333-7464

Fax: 612-342-2417

Toll: 800-394-6590

www.PrecisionAssoc.com



O-Rings Special Size



| Mold IDen | C/S | ID | OD (Ref) |
|-------------|-------|-------|----------|
| 140-5.253 | 0.140 | 5.253 | 5.533 |
| 140-5.260 | 0.140 | 5.260 | 5.540 |
| 125-5.270 | 0.125 | 5.270 | 5.520 |
| 103-5.272ES | 0.103 | 5.285 | 5.491 |
| 71-5.288 | 0.071 | 5.288 | 5.430 |
| 103-5.290ES | 0.103 | 5.303 | 5.509 |
| 104-5.305 | 0.104 | 5.305 | 5.513 |
| 103-5.300ES | 0.103 | 5.313 | 5.519 |
| 118-5.315 | 0.118 | 5.315 | 5.551 |
| 103-5.322ES | 0.103 | 5.336 | 5.542 |
| 70-5.360 | 0.070 | 5.360 | 5.500 |
| 50-5.302VS | 0.051 | 5.365 | 5.467 |
| 70-5.379 | 0.070 | 5.379 | 5.519 |
| 103-5.380ES | 0.103 | 5.394 | 5.600 |
| 210-5.450 | 0.208 | 5.394 | 5.810 |
| 330-5.319SS | 0.335 | 5.395 | 6.065 |
| 79-5.315VS | 0.080 | 5.396 | 5.556 |
| 330-5.354SS | 0.335 | 5.431 | 6.101 |
| 142-5.466 | 0.142 | 5.466 | 5.750 |
| 118-5.492 | 0.118 | 5.492 | 5.728 |
| 103-5.483ES | 0.103 | 5.497 | 5.703 |
| 162-5.500 | 0.162 | 5.500 | 5.824 |
| 139-5.503 | 0.139 | 5.503 | 5.781 |
| 103-5.496ES | 0.103 | 5.510 | 5.716 |
| 140-5.512 | 0.140 | 5.511 | 5.791 |
| 104-5.512 | 0.104 | 5.514 | 5.722 |
| 125-5.531 | 0.125 | 5.531 | 5.781 |
| 71-5.543 | 0.071 | 5.543 | 5.685 |
| 121-5.562 | 0.121 | 5.562 | 5.804 |
| 500-5.562 | 0.500 | 5.562 | 6.562 |
| 104-5.565 | 0.104 | 5.565 | 5.773 |
| 105-5.566 | 0.105 | 5.566 | 5.776 |
| 103-5.602 | 0.103 | 5.602 | 5.808 |
| 157-5.512VS | 0.160 | 5.607 | 5.927 |
| 189-5.650 | 0.188 | 5.631 | 6.007 |
| 140-5.661 | 0.140 | 5.661 | 5.941 |
| 118-5.689 | 0.118 | 5.689 | 5.925 |
| 70-5.700 | 0.070 | 5.703 | 5.843 |
| 97-5.723 | 0.097 | 5.723 | 5.917 |
| 241-5.725 | 0.241 | 5.725 | 6.207 |
| 375-5.750 | 0.375 | 5.750 | 6.500 |
| 103-5.750ES | 0.103 | 5.765 | 5.971 |
| 197-5.708VS | 0.200 | 5.781 | 6.181 |
| 71-5.795 | 0.071 | 5.795 | 5.937 |
| 70-5.740SS | 0.071 | 5.796 | 5.938 |

| Mold IDen | C/S | ID | OD (Ref) |
|-------------|-------|-------|----------|
| 278-5.796 | 0.278 | 5.796 | 6.352 |
| 500-5.750VS | 0.509 | 5.849 | 6.867 |
| 70-5.810SS | 0.071 | 5.865 | 6.007 |
| 118-5.905 | 0.118 | 5.905 | 6.141 |
| 375-5.850VS | 0.381 | 5.950 | 6.712 |
| 70-5.910SS | 0.071 | 5.966 | 6.108 |
| 70-5.968 | 0.070 | 5.968 | 6.108 |
| 176-5.906SS | 0.179 | 5.996 | 6.354 |
| 500-6.000 | 0.500 | 6.000 | 7.000 |
| 245-6.015 | 0.245 | 6.015 | 6.505 |
| 140-6.043 | 0.140 | 6.043 | 6.323 |
| 71-6.048 | 0.071 | 6.048 | 6.190 |
| 141-6.064 | 0.141 | 6.064 | 6.346 |
| 224-6.075 | 0.224 | 6.075 | 6.523 |
| 74-6.100 | 0.074 | 6.080 | 6.228 |
| 103-6.125 | 0.103 | 6.125 | 6.331 |
| 256-6.181 | 0.256 | 6.172 | 6.684 |
| 70-6.180 | 0.070 | 6.180 | 6.320 |
| 103-6.167ES | 0.103 | 6.183 | 6.389 |
| 60-6.187 | 0.060 | 6.187 | 6.307 |
| 241-6.225 | 0.241 | 6.225 | 6.707 |
| 500-6.264 | 0.497 | 6.225 | 7.219 |
| 80-6.250 | 0.080 | 6.250 | 6.410 |
| 211-6.256 | 0.211 | 6.256 | 6.678 |
| 258-6.179VS | 0.261 | 6.258 | 6.780 |
| 104-6.299 | 0.104 | 6.298 | 6.506 |
| 157-6.299 | 0.157 | 6.299 | 6.613 |
| 71-6.300 | 0.071 | 6.300 | 6.442 |
| 70-6.284ES | 0.070 | 6.306 | 6.446 |
| 455-6.308 | 0.455 | 6.308 | 7.218 |
| 70-6.309 | 0.070 | 6.309 | 6.449 |
| 112-6.378SS | 0.112 | 6.325 | 6.549 |
| 260-6.325 | 0.260 | 6.325 | 6.845 |
| 70-6.310VS | 0.070 | 6.349 | 6.489 |
| 139-6.350 | 0.139 | 6.350 | 6.628 |
| 139-6.350 | 0.139 | 6.350 | 6.628 |
| 210-6.350 | 0.210 | 6.350 | 6.770 |
| 103-6.380 | 0.103 | 6.380 | 6.586 |
| 164-6.299SS | 0.167 | 6.395 | 6.729 |
| 103-6.400ES | 0.103 | 6.416 | 6.622 |
| 103-6.424 | 0.103 | 6.424 | 6.630 |
| 63-6.400VS | 0.064 | 6.460 | 6.588 |
| 118-6.378VS | 0.120 | 6.460 | 6.700 |
| 125-6.460 | 0.125 | 6.460 | 6.710 |
| 80-6.500 | 0.080 | 6.500 | 6.660 |

Precision Associates, Inc.
3800 N. Washington Ave.
Minneapolis, MN 55412

Phone: 612-333-7464
Fax: 612-342-2417
Toll: 800-394-6590

www.PrecisionAssoc.com



O-Rings Special Size



| Mold IDen | C/S | ID | OD (Ref) |
|-------------|-------|-------|----------|
| 94-6.500 | 0.094 | 6.500 | 6.688 |
| 91-6.394SS | 0.093 | 6.510 | 6.696 |
| 140-6.516 | 0.140 | 6.516 | 6.796 |
| 103-6.501ES | 0.103 | 6.518 | 6.724 |
| 520-6.519 | 0.520 | 6.519 | 7.559 |
| 70-6.520 | 0.070 | 6.520 | 6.660 |
| 258-6.437VS | 0.261 | 6.520 | 7.042 |
| 104-6.551 | 0.104 | 6.551 | 6.759 |
| 71-6.553 | 0.071 | 6.553 | 6.695 |
| 275-6.600 | 0.275 | 6.600 | 7.150 |
| 139-6.609 | 0.139 | 6.609 | 6.887 |
| 500-6.625 | 0.500 | 6.625 | 7.625 |
| 50-6.567VS | 0.050 | 6.629 | 6.729 |
| 380-6.640 | 0.380 | 6.640 | 7.400 |
| 139-6.630ES | 0.139 | 6.646 | 6.924 |
| 210-6.666 | 0.210 | 6.666 | 7.086 |
| 45-6.690 | 0.045 | 6.667 | 6.757 |
| 70-6.687 | 0.070 | 6.687 | 6.827 |
| 380-6.688 | 0.380 | 6.688 | 7.448 |
| 103-6.674ES | 0.103 | 6.691 | 6.897 |
| 70-6.734 | 0.070 | 6.734 | 6.874 |
| 437-6.750 | 0.437 | 6.750 | 7.624 |
| 375-6.650VS | 0.381 | 6.763 | 7.525 |
| 312-6.700VS | 0.315 | 6.770 | 7.400 |
| 150-6.650SS | 0.153 | 6.778 | 7.084 |
| 224-6.783 | 0.224 | 6.783 | 7.231 |
| 70-6.722SS | 0.071 | 6.785 | 6.927 |
| 140-6.797 | 0.140 | 6.797 | 7.077 |
| 104-6.803 | 0.104 | 6.803 | 7.011 |
| 71-6.805 | 0.071 | 6.805 | 6.947 |
| 47-6.812 | 0.047 | 6.812 | 6.906 |
| 295-6.835NS | 0.294 | 6.822 | 7.410 |
| 157-6.830 | 0.157 | 6.830 | 7.144 |
| 103-6.850ES | 0.103 | 6.867 | 7.073 |
| 139-6.850ES | 0.139 | 6.867 | 7.145 |
| 70-6.950 | 0.070 | 6.950 | 7.090 |
| 295-6.910SS | 0.297 | 6.964 | 7.558 |
| 241-6.975 | 0.241 | 6.975 | 7.457 |
| 60-7.000 | 0.060 | 7.000 | 7.120 |
| 160-7.006 | 0.160 | 7.006 | 7.326 |
| 272-7.051 | 0.272 | 7.051 | 7.595 |
| 104-7.053 | 0.104 | 7.053 | 7.261 |
| 140-7.053 | 0.140 | 7.053 | 7.333 |
| 71-7.058 | 0.071 | 7.058 | 7.200 |
| 375-7.125SS | 0.377 | 7.157 | 7.911 |

| Mold IDen | C/S | ID | OD (Ref) |
|-------------|-------|-------|----------|
| 241-7.225 | 0.241 | 7.225 | 7.707 |
| 104-7.308 | 0.104 | 7.308 | 7.516 |
| 71-7.310 | 0.071 | 7.310 | 7.452 |
| 103-7.300ES | 0.103 | 7.319 | 7.525 |
| 500-7.250ES | 0.506 | 7.339 | 8.351 |
| 70-7.360ES | 0.070 | 7.371 | 7.511 |
| 281-7.378 | 0.281 | 7.378 | 7.940 |
| 375-7.324SS | 0.379 | 7.409 | 8.167 |
| 103-7.416 | 0.103 | 7.435 | 7.641 |
| 241-7.475 | 0.241 | 7.475 | 7.957 |
| 70-7.500 | 0.070 | 7.500 | 7.640 |
| 375-7.500 | 0.375 | 7.500 | 8.250 |
| 500-7.250VS | 0.518 | 7.505 | 8.541 |
| 236-7.441 | 0.238 | 7.509 | 7.985 |
| 104-7.560 | 0.104 | 7.560 | 7.768 |
| 71-7.562 | 0.071 | 7.562 | 7.704 |
| 140-7.562 | 0.140 | 7.562 | 7.842 |
| 278-7.567 | 0.278 | 7.567 | 8.123 |
| 215-7.581 | 0.215 | 7.571 | 8.001 |
| 103-7.583ES | 0.103 | 7.602 | 7.808 |
| 103-7.609 | 0.103 | 7.609 | 7.815 |
| 70-7.613 | 0.070 | 7.613 | 7.753 |
| 139-7.609ES | 0.139 | 7.628 | 7.906 |
| 103-7.673ES | 0.103 | 7.692 | 7.898 |
| 28-7.717NS | 0.028 | 7.694 | 7.750 |
| 241-7.725 | 0.241 | 7.725 | 8.207 |
| 375-7.733 | 0.375 | 7.733 | 8.483 |
| 104-7.813 | 0.104 | 7.813 | 8.021 |
| 146-7.700SS | 0.148 | 7.817 | 8.113 |
| 118-7.784NS | 0.118 | 7.843 | 8.079 |
| 103-7.862 | 0.103 | 7.862 | 8.068 |
| 103-7.848ES | 0.103 | 7.868 | 8.074 |
| 70-7.870 | 0.070 | 7.870 | 8.010 |
| 139-7.850ES | 0.139 | 7.870 | 8.148 |
| 230-7.829VS | 0.231 | 7.875 | 8.337 |
| 103-7.950NS | 0.103 | 7.939 | 8.145 |
| 103-7.950ES | 0.103 | 7.970 | 8.176 |
| 139-7.950ES | 0.139 | 7.970 | 8.248 |
| 241-7.975 | 0.241 | 7.975 | 8.457 |
| 625-8.000 | 0.625 | 8.000 | 9.250 |
| 140-8.023 | 0.140 | 8.023 | 8.303 |
| 104-8.065 | 0.104 | 8.065 | 8.273 |
| 103-8.039ES | 0.104 | 8.083 | 8.291 |
| 199-8.029ES | 0.200 | 8.083 | 8.483 |
| 279-8.105 | 0.279 | 8.105 | 8.663 |

Precision Associates, Inc.

3800 N. Washington Ave.
Minneapolis, MN 55412

36

Phone: 612-333-7464

Fax: 612-342-2417

Toll: 800-394-6590

www.PrecisionAssoc.com



O-Rings

Special Size



| Mold IDen | C/S | ID | OD (Ref) |
|-------------|-------|-------|----------|
| 187-8.115ES | 0.188 | 8.147 | 8.523 |
| 70-8.135ES | 0.070 | 8.148 | 8.288 |
| 375-8.159 | 0.375 | 8.159 | 8.909 |
| 331-8.197 | 0.331 | 8.197 | 8.859 |
| 275-8.225 | 0.275 | 8.225 | 8.775 |
| 375-8.130SS | 0.379 | 8.225 | 8.983 |
| 224-8.240 | 0.224 | 8.240 | 8.688 |
| 375-8.250 | 0.375 | 8.250 | 9.000 |
| 104-8.277 | 0.104 | 8.277 | 8.485 |
| 140-8.295 | 0.140 | 8.295 | 8.575 |
| 103-8.282ES | 0.103 | 8.303 | 8.509 |
| 236-8.225VS | 0.238 | 8.306 | 8.782 |
| 270-8.240SS | 0.273 | 8.336 | 8.882 |
| 388-8.380 | 0.388 | 8.380 | 9.156 |
| 275-8.350ES | 0.277 | 8.404 | 8.958 |
| 70-8.400ES | 0.070 | 8.413 | 8.553 |
| 187-8.553 | 0.186 | 8.524 | 8.896 |
| 241-8.475SS | 0.243 | 8.546 | 9.032 |
| 328-8.500VS | 0.331 | 8.569 | 9.231 |
| 104-8.570 | 0.104 | 8.570 | 8.778 |
| 118-8.504VS | 0.119 | 8.584 | 8.822 |
| 375-8.505SS | 0.379 | 8.604 | 9.362 |
| 625-8.625 | 0.625 | 8.625 | 9.875 |
| 142-8.634 | 0.142 | 8.634 | 8.918 |
| 210-8.641 | 0.210 | 8.641 | 9.061 |
| 275-8.725 | 0.275 | 8.725 | 9.275 |
| 312-8.750 | 0.312 | 8.750 | 9.374 |
| 104-8.780 | 0.104 | 8.780 | 8.988 |
| 380-8.812ES | 0.381 | 8.834 | 9.596 |
| 103-8.825ES | 0.103 | 8.847 | 9.053 |
| 103-8.840ES | 0.103 | 8.862 | 9.068 |
| 323-8.898 | 0.323 | 8.898 | 9.544 |
| 103-8.998ES | 0.103 | 9.021 | 9.227 |
| 103-9.050 | 0.103 | 9.050 | 9.256 |
| 140-9.072 | 0.140 | 9.072 | 9.352 |
| 104-9.075 | 0.104 | 9.075 | 9.283 |
| 103-9.250 | 0.103 | 9.250 | 9.456 |
| 104-9.328 | 0.104 | 9.328 | 9.536 |
| 272-9.413 | 0.272 | 9.413 | 9.957 |
| 375-9.312SS | 0.379 | 9.421 | 10.179 |
| 70-9.435ES | 0.070 | 9.450 | 9.590 |
| 375-9.250SS | 0.384 | 9.464 | 10.232 |
| 103-9.500ES | 0.103 | 9.524 | 9.730 |
| 140-9.531 | 0.140 | 9.531 | 9.811 |
| 270-9.421SS | 0.273 | 9.531 | 10.077 |

| Mold IDen | C/S | ID | OD (Ref) |
|--------------|-------|--------|----------|
| 202-9.598VS | 0.203 | 9.641 | 10.047 |
| 70-9.621ES | 0.070 | 9.659 | 9.799 |
| 374-9.646ES | 0.375 | 9.664 | 10.413 |
| 70-9.650ES | 0.070 | 9.665 | 9.805 |
| 70-9.675ES | 0.070 | 9.690 | 9.830 |
| 375-9.600 | 0.380 | 9.690 | 10.450 |
| 139-9.700 | 0.139 | 9.700 | 9.978 |
| 241-9.475SS | 0.247 | 9.713 | 10.207 |
| 140-9.782 | 0.140 | 9.782 | 10.062 |
| 215-9.837 | 0.215 | 9.837 | 10.267 |
| 103-9.892ES | 0.103 | 9.917 | 10.123 |
| 159-9.950 | 0.159 | 9.950 | 10.268 |
| 103-9.940ES | 0.103 | 9.965 | 10.171 |
| 70-9.970 | 0.070 | 9.970 | 10.110 |
| 375-9.881SS | 0.379 | 9.996 | 10.754 |
| 103-9.982ES | 0.103 | 10.007 | 10.213 |
| 215-10.060 | 0.215 | 10.060 | 10.490 |
| 139-10.048ES | 0.139 | 10.073 | 10.351 |
| 70-9.989VS | 0.071 | 10.112 | 10.254 |
| 241-9.975VS | 0.244 | 10.118 | 10.606 |
| 103-10.095ES | 0.103 | 10.121 | 10.327 |
| 210-10.115ES | 0.211 | 10.141 | 10.563 |
| 139-10.178 | 0.139 | 10.178 | 10.456 |
| 70-10.207ES | 0.070 | 10.223 | 10.363 |
| 210-10.250 | 0.210 | 10.250 | 10.670 |
| 351-10.270 | 0.351 | 10.270 | 10.972 |
| 167-10.186SS | 0.169 | 10.282 | 10.620 |
| 210-10.190SS | 0.212 | 10.296 | 10.720 |
| 210-10.300 | 0.210 | 10.300 | 10.720 |
| 70-10.232SS | 0.071 | 10.328 | 10.470 |
| 349-10.199VS | 0.354 | 10.335 | 11.043 |
| 104-10.372 | 0.104 | 10.372 | 10.580 |
| 70-10.433ES | 0.070 | 10.459 | 10.599 |
| 70-10.485 | 0.070 | 10.485 | 10.625 |
| 103-10.450ES | 0.103 | 10.487 | 10.693 |
| 103-10.449 | 0.104 | 10.517 | 10.725 |
| 260-10.425SS | 0.262 | 10.523 | 11.047 |
| 140-10.535 | 0.140 | 10.535 | 10.815 |
| 159-10.600 | 0.159 | 10.600 | 10.918 |
| 139-10.610 | 0.139 | 10.610 | 10.888 |
| 70-10.530SS | 0.071 | 10.629 | 10.771 |
| 71-10.635 | 0.071 | 10.635 | 10.777 |
| 103-10.622ES | 0.103 | 10.649 | 10.855 |
| 103-10.500SS | 0.105 | 10.660 | 10.870 |
| 275-10.725 | 0.275 | 10.725 | 11.275 |

Precision Associates, Inc.
3800 N. Washington Ave.
Minneapolis, MN 55412

Phone: 612-333-7464
Fax: 612-342-2417
Toll: 800-394-6590

www.PrecisionAssoc.com



O-Rings Special Size



| Mold IDen | C/S | ID | OD (Ref) |
|--------------|-------|--------|----------|
| 375-10.690SS | 0.379 | 10.728 | 11.486 |
| 139-10.734 | 0.139 | 10.760 | 11.038 |
| 256-10.846SS | 0.255 | 10.801 | 11.311 |
| 103-10.781ES | 0.103 | 10.808 | 11.014 |
| 70-10.800ES | 0.070 | 10.817 | 10.957 |
| 157-10.827 | 0.157 | 10.827 | 11.141 |
| 380-10.875 | 0.380 | 10.875 | 11.635 |
| 103-10.710SS | 0.105 | 10.958 | 11.168 |
| 103-10.984 | 0.103 | 10.984 | 11.190 |
| 272-10.988 | 0.272 | 10.988 | 11.532 |
| 103-10.964ES | 0.103 | 10.992 | 11.198 |
| 139-11.034ES | 0.139 | 11.062 | 11.340 |
| 70-11.085ES | 0.070 | 11.102 | 11.242 |
| 103-11.120 | 0.103 | 11.120 | 11.326 |
| 141-11.120 | 0.141 | 11.120 | 11.402 |
| 103-11.150ES | 0.103 | 11.178 | 11.384 |
| 103-11.239NS | 0.103 | 11.190 | 11.396 |
| 103-11.096SS | 0.104 | 11.200 | 11.408 |
| 103-11.275ES | 0.103 | 11.275 | 11.481 |
| 70-11.339ES | 0.070 | 11.368 | 11.508 |
| 70-11.240SS | 0.071 | 11.423 | 11.565 |
| 103-11.480ES | 0.103 | 11.509 | 11.715 |
| 290-11.475ES | 0.291 | 11.532 | 12.114 |
| 93-11.500 | 0.093 | 11.541 | 11.727 |
| 339-11.654 | 0.339 | 11.638 | 12.316 |
| 103-11.897NS | 0.103 | 11.846 | 12.052 |
| 70-11.989 | 0.070 | 11.989 | 12.129 |
| 275-12.000 | 0.275 | 12.000 | 12.550 |
| 277-12.064 | 0.277 | 12.064 | 12.618 |
| 140-12.073 | 0.140 | 12.073 | 12.353 |
| 370-12.157 | 0.368 | 12.081 | 12.817 |
| 370-12.106 | 0.370 | 12.106 | 12.846 |
| 256-12.205 | 0.255 | 12.164 | 12.674 |
| 103-12.155ES | 0.103 | 12.186 | 12.392 |
| 142-12.214 | 0.142 | 12.214 | 12.498 |
| 142-12.224 | 0.142 | 12.224 | 12.508 |
| 375-12.250VS | 0.376 | 12.269 | 13.021 |
| 139-12.278 | 0.139 | 12.278 | 12.556 |
| 209-12.413 | 0.209 | 12.413 | 12.831 |
| 210-12.475 | 0.210 | 12.475 | 12.895 |
| 139-12.484 | 0.139 | 12.516 | 12.794 |
| 139-12.475VS | 0.141 | 12.653 | 12.935 |
| 70-12.720 | 0.070 | 12.720 | 12.860 |
| 103-12.718ES | 0.104 | 12.788 | 12.996 |
| 312-12.750SS | 0.316 | 12.899 | 13.531 |

| Mold IDen | C/S | ID | OD (Ref) |
|--------------|-------|--------|----------|
| 375-12.750SS | 0.379 | 12.899 | 13.657 |
| 139-13.062 | 0.139 | 13.062 | 13.340 |
| 139-13.114 | 0.140 | 13.114 | 13.394 |
| 70-13.114ES | 0.070 | 13.134 | 13.274 |
| 139-13.234 | 0.139 | 13.234 | 13.512 |
| 139-13.248 | 0.139 | 13.248 | 13.526 |
| 224-13.252 | 0.224 | 13.252 | 13.700 |
| 103-13.425ES | 0.103 | 13.459 | 13.665 |
| 210-13.475 | 0.210 | 13.475 | 13.895 |
| 139-13.484 | 0.139 | 13.484 | 13.762 |
| 210-13.375SS | 0.212 | 13.514 | 13.938 |
| 625-13.875SS | 0.630 | 14.101 | 15.361 |
| 631-14.101 | 0.631 | 14.101 | 15.363 |
| 339-14.189 | 0.338 | 14.128 | 14.804 |
| 224-14.146 | 0.224 | 14.146 | 14.594 |
| 500-14.156 | 0.500 | 14.156 | 15.156 |
| 1.000-14.430 | 0.993 | 14.325 | 16.311 |
| 139-14.484 | 0.139 | 14.484 | 14.762 |
| 288-14.250SS | 0.293 | 14.515 | 15.101 |
| 87-14.470SS | 0.088 | 14.649 | 14.825 |
| 197-14.764 | 0.197 | 14.764 | 15.158 |
| 225-14.900NS | 0.224 | 14.836 | 15.284 |
| 248-15.000 | 0.247 | 14.950 | 15.444 |
| 104-14.990 | 0.104 | 14.990 | 15.198 |
| 103-15.170VS | 0.104 | 15.259 | 15.467 |
| 338-15.410 | 0.338 | 15.410 | 16.086 |
| 210-15.475 | 0.210 | 15.475 | 15.895 |
| 139-15.484 | 0.139 | 15.484 | 15.762 |
| 103-15.500VS | 0.104 | 15.591 | 15.799 |
| 225-15.500SS | 0.227 | 15.646 | 16.100 |
| 1.000-15.735 | 1.000 | 15.735 | 17.735 |
| 110-16.186 | 0.110 | 16.186 | 16.406 |
| 70-16.268SS | 0.070 | 16.357 | 16.497 |
| 139-16.455 | 0.139 | 16.455 | 16.733 |
| 70-16.535 | 0.070 | 16.577 | 16.717 |
| 375-16.625 | 0.375 | 16.625 | 17.375 |
| 312-16.690 | 0.311 | 16.690 | 17.312 |
| 275-16.750 | 0.274 | 16.694 | 17.242 |
| 210-16.830 | 0.210 | 16.830 | 17.250 |
| 290-16.625SS | 0.294 | 16.830 | 17.418 |
| 139-17.455 | 0.139 | 17.455 | 17.733 |
| 139-17.480 | 0.139 | 17.480 | 17.758 |
| 240-17.250SS | 0.245 | 17.581 | 18.071 |
| 313-18.000 | 0.313 | 18.000 | 18.626 |
| 139-18.455 | 0.139 | 18.455 | 18.733 |

Precision Associates, Inc.

3800 N. Washington Ave.
Minneapolis, MN 55412

38

Phone: 612-333-7464

Fax: 612-342-2417

Toll: 800-394-6590

www.PrecisionAssoc.com



O-Rings Special Size



| Mold IDen | C/S | ID | OD (Ref) |
|--------------|-------|--------|----------|
| 125-18.600 | 0.125 | 18.600 | 18.850 |
| 139-18.875 | 0.139 | 18.875 | 19.153 |
| 210-19.200 | 0.210 | 19.200 | 19.620 |
| 500-19.411 | 0.500 | 19.411 | 20.411 |
| 139-19.455 | 0.139 | 19.455 | 19.733 |
| 352-20.126 | 0.352 | 20.098 | 20.802 |
| 346-20.125 | 0.346 | 20.125 | 20.817 |
| 22-20.370 | 0.022 | 20.370 | 20.414 |
| 139-20.455 | 0.139 | 20.455 | 20.733 |
| 197-20.669 | 0.196 | 20.600 | 20.992 |
| 197-20.670 | 0.196 | 20.601 | 20.993 |
| 197-20.669VS | 0.199 | 20.936 | 21.334 |
| 124-21.000 | 0.124 | 21.000 | 21.248 |
| 70-20.840SS | 0.071 | 21.077 | 21.219 |
| 139-21.455 | 0.139 | 21.455 | 21.733 |
| 70-21.270SS | 0.071 | 21.512 | 21.654 |
| 139-21.800SS | 0.140 | 22.014 | 22.294 |
| 212-22.106 | 0.212 | 22.106 | 22.530 |
| 277-23.098 | 0.277 | 23.098 | 23.652 |
| 210-22.940VS | 0.212 | 23.178 | 23.602 |
| 212-24.104 | 0.212 | 24.104 | 24.528 |
| 212-24.188 | 0.212 | 24.188 | 24.612 |
| 210-24.625 | 0.210 | 24.625 | 25.045 |
| 340-25.275VS | 0.344 | 25.599 | 26.287 |
| 250-25.375VS | 0.252 | 25.614 | 26.118 |
| 70-25.570SS | 0.071 | 25.810 | 25.952 |
| 210-25.580VS | 0.212 | 25.846 | 26.270 |
| 341-25.984 | 0.339 | 25.846 | 26.524 |
| 212-26.209 | 0.212 | 26.209 | 26.633 |
| 210-26.940 | 0.210 | 26.940 | 27.360 |
| 375-27.250VS | 0.377 | 27.399 | 28.153 |
| 275-27.485 | 0.275 | 27.485 | 28.035 |
| 139-27.750SS | 0.140 | 28.291 | 28.571 |
| 275-28.801 | 0.275 | 28.801 | 29.351 |
| 275-29.331ES | 0.276 | 29.520 | 30.072 |
| 210-29.880VS | 0.212 | 30.190 | 30.614 |
| 210-33.750VS | 0.211 | 33.949 | 34.371 |
| 275-33.750VS | 0.277 | 33.949 | 34.503 |



3800 North Washington Ave.
Minneapolis, MN 55412-2142

Toll Free: 1-800-394-6590
612-333-7464
Sales: 612-334-9190
FAX: 612-342-2417

Ask us about our complete line of product literature:

- ***O-Rings***
- ***U-Cups***
- ***X-Rings***
- ***V-Rings***
- ***8-Rings™***
- ***Rod Wipers***
- ***Multiseal® Low Friction Seals***
- ***Kurv-Bak™ Hard Rubber Back-Up Rings***
- ***Rubber Balls***
- ***Custom Moldings***
- ***Medical Seals***
- ***Machined Engineered Plastics***

After more than 60 years in the rubber business, we've learned to be flexible. We'll bend over backwards to design custom solutions that meet your needs *precisely*. PAI is the company you can trust for seal solutions... ***YOUR WAY!***

- **Over 1,000 different compounds**
- **More than 2,600 O-Ring sizes**
- **ISO 14644-1 Class 7 (10,000) Clean Room**
- **Custom molding**
- **On-Site Mold Shop**
- **99% on-time delivery**

www.PrecisionAssoc.com